

Figures from 2018 unless another year is specified



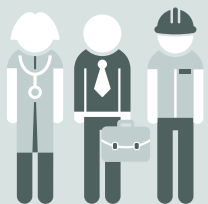
## 45%

of jobs in the 5 largest agglomerations  
(Basel, Bern, Geneva, Lausanne,  
Zurich), 2017



## 4.2%

Social assistance rate in the urban area  
twice as high as in rural area, 2017



## 49%

of active population with  
a tertiary-level degree in an urban,  
39% in a rural area

Unemployment rate  
in the agglomerations



Geneva 4.3%

Lausanne 4.0%

Zurich 2.7%

Basel 2.7%

Other agglomerations or cores 2.6%

**Switzerland** 2.6%

Bern 2.1%

No agglomerations or cores 1.9%

Average distance to nearest service, 2015

Transport stops (2017)



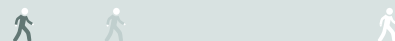
Compulsory schools



Grocery shops



Doctors' practices



0 0.5 1.0 1.5 2.0 2.5 km



Urban



Intermediate



Rural