

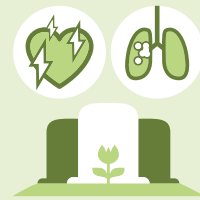
Figures from 2018 unless another year is specified



Share of the population in good health, 2017

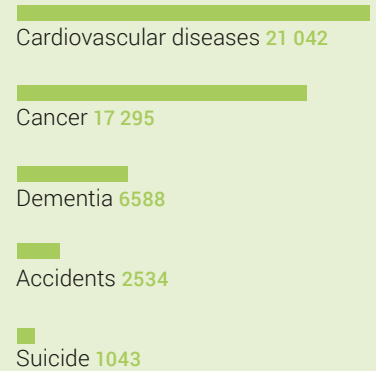


Share of the population that is obese, 2017



66 971

Deaths in 2017, of which:



264 326

Full-time equivalents, jobs in hospitals and nursing homes



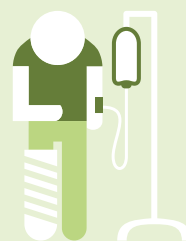
4.4

Doctors per 1000 inhabitants

CHF 82.8 bn

(12.4% of the GDP)

Health expenditure 2017, of which:



12%

Share of the hospitalised population

15%

Share of the population aged 80 and over in nursing homes
(72% of residents aged ≥ 80 years are women)

