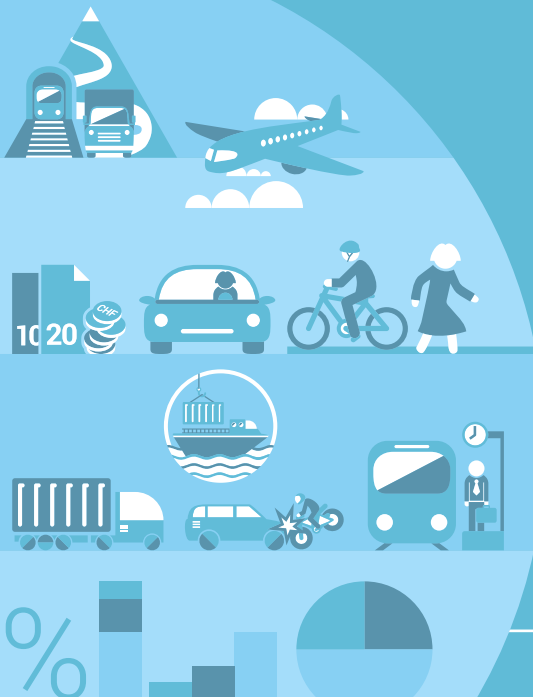


2021



11

Mobility and
transport

Neuchâtel 2021

Mobility and Transport

Pocket Statistics 2021



Schweizerische Eidgenossenschaft
Confédération suisse
Confederazione Svizzera
Confederaziun svizra

Swiss Confederation

Federal Department of Home Affairs FDHA
Federal Statistical Office FSO

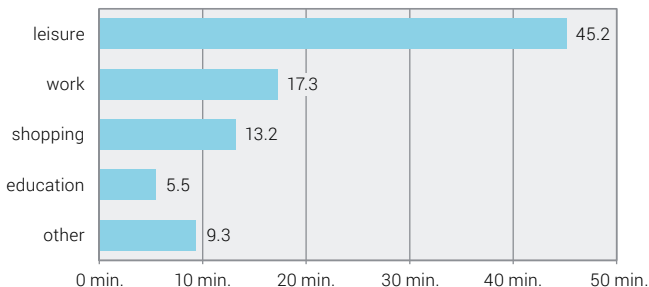


United Nations
**WORLD
DATA
FORUM**
BERN, SWITZERLAND
3-6 OCTOBER 2021

The Swiss population spends 90 minutes in transport every day



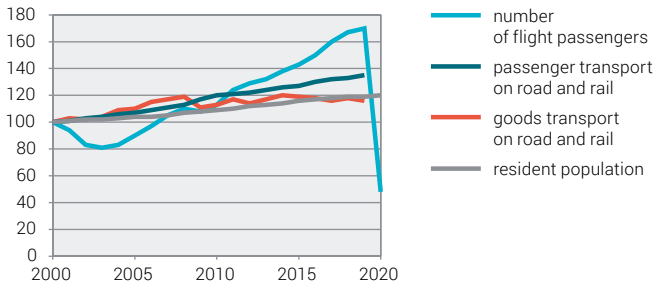
This includes 8 minutes of waiting and transfer time.
Leisure is by far the main trip purpose.



Note: status in 2015, only distances in Switzerland, base = resident population aged 6 or over

Passenger transport grew faster than the population until 2019

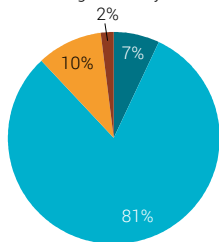
Evolution index, 2000=100



Note: no figures are available yet for 2020 for passenger and goods transport by road and rail; population figures for 2020 are provisional; passenger transport base = person-km, goods transport base = tonne-km

Transport infrastructure covers an area the size of the canton of Thurgau

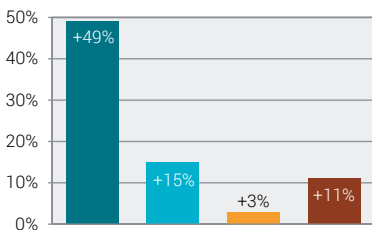
Transportation area
according to survey 2004/09



Total: 952 km²



Increase
since survey 1979/85



Length of roads and rails

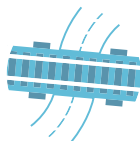
| | | |
|--------------------|-----------|------|
| Road network | 83 274 km | 2020 |
| of which motorways | 1 544 km | 2020 |
| Railway network | 5 196 km | 2015 |

Number of public transport stations and stops

| | | |
|--------------|--------|------|
| Railway | 1 735 | 2015 |
| Bus and tram | 21 846 | 2015 |

Number of airports

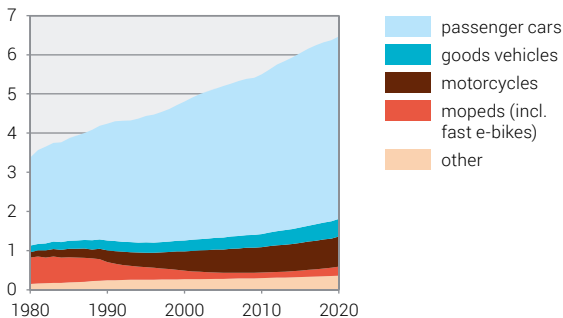
| | | |
|-------------------|----|------|
| National airports | 3 | 2019 |
| Regional airports | 11 | 2019 |
| Airfields | 44 | 2019 |



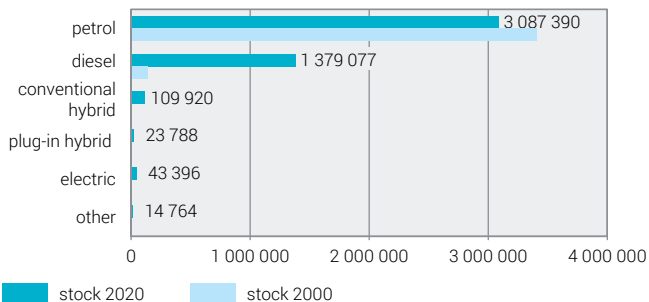
There are more than 6 million motor vehicles on Swiss roads

4.7 million of these are cars – twice as many as there were in 1980. 65% of households have a bicycle, 7% an e-bike (in 2015).

Million motor vehicles

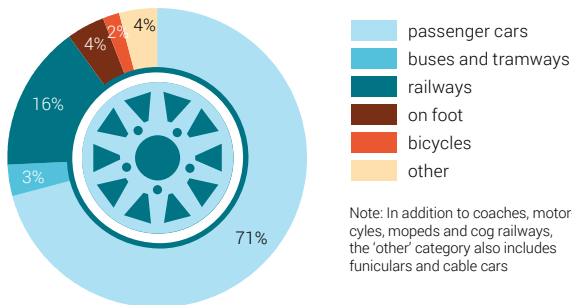


Passenger cars: electric cars gain momentum but their number remains low



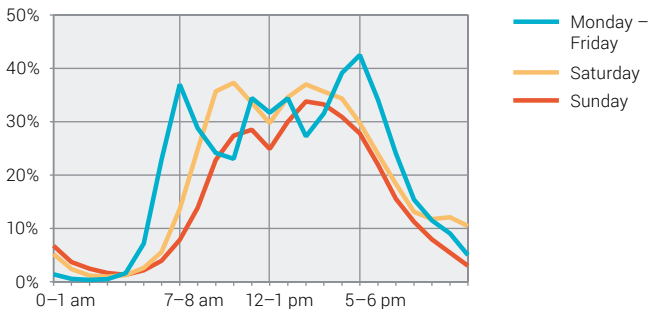
Cars dominate passenger transport

Shares of means of transport in the person-kilometres covered
(by road and rail, 2019)



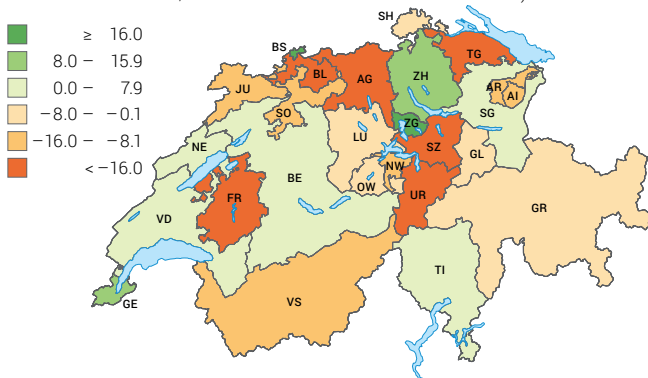
Transport reaches its peak during the week between 5 and 6 pm

Share of the population on the move; 2015 (in Switzerland)



Basel-Stadt and Zug are particularly attractive to commuters

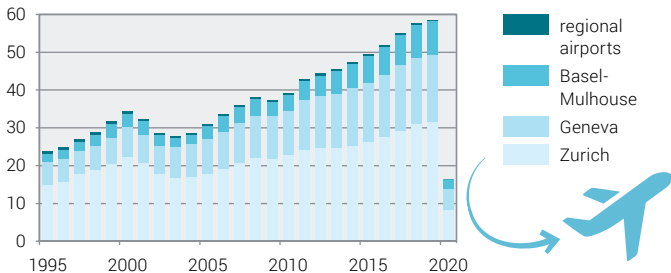
Relative commuter balance of cantons, 2019 (inbound commuters minus outbound commuters, as a % of commuters resident in the canton)



Note: excluding cross-border commuters heading/from abroad

The number of air transport passengers fell by 72% between 2019 and 2020

Millions of arriving and departing passengers

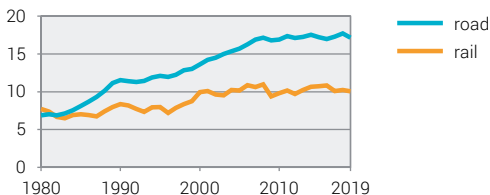


Goods transport almost doubled between 1980 and 2019

63% of transport performance is by road, 37% by rail.

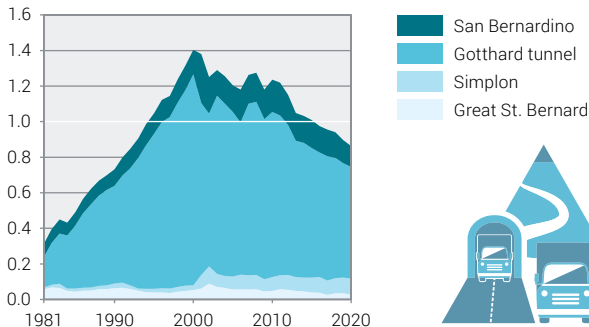
Domestic transport dominates road transport (65% of tonne-kilometres), and transit trips dominate rail transport (63%).

Billion tonne-kilometres



Since 2001, fewer and fewer lorries have travelled through the Swiss Alps

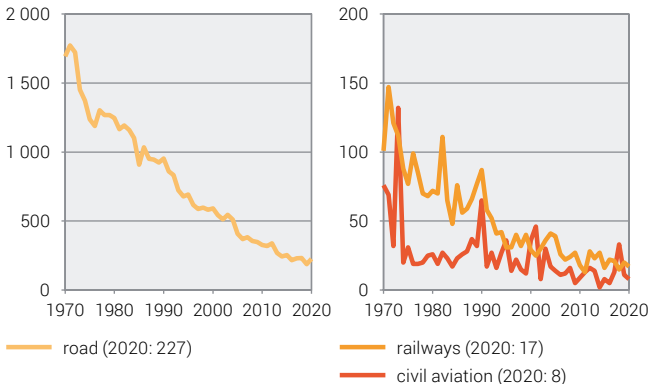
Number of transalpine trips by heavy goods vehicles
Million



The number of deaths in traffic has fallen considerably



Fatally injured persons



Mobility is responsible for more than a third of energy consumption and CO₂ emissions

| | | |
|--|--|-----------------------|
| Energy consumption by transport, 2019 | | 314 petajoules |
| Change from 2000 | | +4% |
| Share in the total energy consumption | | 38% |
| CO₂ emissions from transport, 2019 | | 14.7 m tonnes |
| Change from 2000 | | -6% |
| Share in the total emissions | | 40% |
| Persons affected by noise from roads, 2015 | | 13% |

Note: CO₂ emissions without international aviation; noise from roads during the day, measured against the thresholds of the noise abatement ordinance

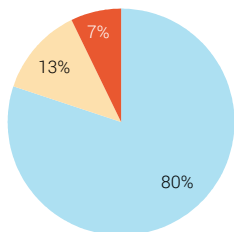


Transport costs CHF 92.7 billion

77% of costs are generated by passenger transport, 23% by goods transport.

Between 2010 and 2017, costs increased by 8%.

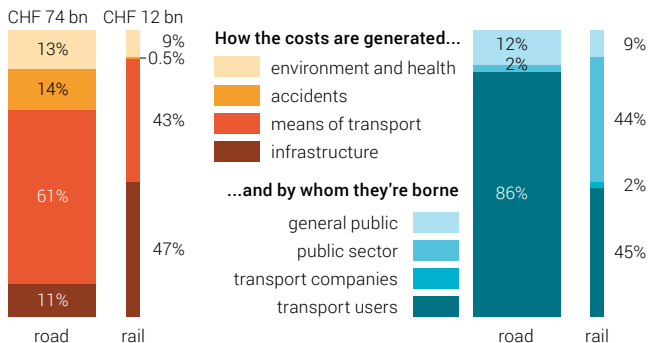
Costs of transport, 2017



- road transport (CHF 74.3 billion)
- rail transport (CHF 11.7 billion)
- air transport (CHF 6.7 billion)

Note: without inland waterways, road transport without pedestrian traffic and bicycles, air transport without general aviation

Transport users do not bear all costs themselves



Note: status in 2017, road transport without pedestrian traffic and bicycles

Sources: FSO – AREA, GTS, CFT, TP, PEND, PV-L, STATPOP; FSO, ARE – MTMC; FSO, FEDRO – STL; FEDRO, FSO – MFZ, SVU; FSO, FOCA – AVIA_LC, AVIA_ZL; FOEN–GIS Noise database of Switzerland sonBase, Greenhouse gas inventory; FOT – New occurrence database; FOT, FEDRO – Transalpine goods transport; SFOE – Overall energy statistics; STSB – Aviation accident statistics

Further information: www.statistics.admin.ch → Look for statistics → 11 – Mobility and transport

| | |
|-----------------------|--|
| Published by: | Federal Statistical Office (FSO) |
| Information: | MOBIL Section, tel. +41 58 463 64 68, verkehr@bfs.admin.ch |
| Editor: | MOBIL Section |
| Series: | Swiss Statistics |
| Topic: | 11 Mobility and transport |
| Original text: | French |
| Translation: | FSO language services |
| Layout: | DIAM Section, Prepress/Print |
| Graphics: | DIAM Section, Prepress/Print |
| Map: | DIAM Section, ThemaKart |
| Icons: | DIAM Section, Prepress/Print |
| Online: | www.statistics.admin.ch |
| Print: | www.statistics.admin.ch Federal Statistical Office, CH-2010 Neuchâtel, order@bfs.admin.ch , tel. +41 58 463 60 60 Printed in Switzerland |
| Copyright: | FSO, Neuchâtel 2021 Reproduction with mention of source authorised (except for commercial purposes). |
| FSO number: | 839-2100 |