

**The future of longevity in
Switzerland :
background and perspectives**

*A report prepared by
the Institute of social and preventive medicine,
Lausanne (IUMSP)
on behalf of
the Swiss Federal Office of Statistics, Neuchâtel*

March 2008

The authors of this report are Laurence Seematter-Bagnoud and Fred Paccaud, both at the IUMSP-Lausanne.

Since its earlier phase, this report benefited from substantial inputs from Jean-Marie Robine, INSERM, Montpellier.

The final draft of the report was discussed by a panel of international leading experts in this field, including demographs from the Swiss Federal Office of Statistics.

Table of content

EXECUTIVE SUMMARY	4
INTRODUCTION.....	6
PAST AND CURRENT TRENDS IN MORTALITY AND LONGEVITY	6
OTHER COUNTRIES	14
PAST AND CURRENT TRENDS IN HEALTHY LIFE EXPECTANCY	16
OTHER COUNTRIES	19
SUMMING UP: LESSONS FROM THE PAST	22
FUTURE EVOLUTION OF LONGEVITY AND HEALTHY LIFE EXPECTANCY	23
"DEMOGRAPHIC" APPROACHES : PROJECTIONS OF THE PAST TRENDS OF MORTALITY OR LIFE EXPECTANCY	23
"DEMOGRAPHIC" APPROACHES : PROJECTIONS BASED ON LIMIT DISTRIBUTION.....	27
"EPIDEMIOLOGICAL" APPROACHES : PROJECTIONS BASED ON HEALTH-RELATED INFORMATION.....	28
CONCLUSION	30
DETERMINANTS OF HEALTHY LIFE EXPECTANCY	33
SUMMING UP AND RECOMMENDATIONS	33
ANNEXES.....	36
LITERATURE.....	41

Executive summary

1. In many developed countries, including Switzerland, the ongoing increase in life expectancy is driven by the mortality decline among older persons. This has important consequences for both the provision of health care and the management of pension funds.
2. In this context, the Swiss Federal Office of Statistics mandated a small group of experts to provide a critical review on the future evolution of mortality in developed countries. The report starts with an analysis of the past trends in life expectancy (see §21 and ff, page 6) and in healthy life expectancy (see §56 and ff, page 16). Longevity is defined here as the duration (or the length) of life as observed in population or in individuals. The oldest and still most used indicators of longevity are life expectancy at birth (LE_0) at a population level, and maximum life span (MLS) at the individual level. A discussion on the future evolution of mortality and health is then presented (see §93 and ff, page 23). A set of recommendations is finally proposed (see §173 and ff, page 33).

Past and current trends in longevity and health

3. In Switzerland, life expectancy at birth (LE_0) continues a steady increase that began at the end of the 19th century, while LE_{65} showed an increase since the 1950s. As in other countries, there is no clear sign that the rise in LE_0 might come to an end, although the yearly increase is slower since the 1980s.
4. The modal age at death, which can be seen as the "usual" mean longevity at a given time, increased steadily since the 1920s. Among the adults, the variability of age at death decreased during the last fifty years, compatible with a compression of mortality.
5. There is however no fate dictating that LE_0 should continue on the same line. A plateau of LE_0 , or even a decline, has been observed in several European countries, probably related to crises affecting the socio-economical environment, the life styles (e.g., alcohol and tobacco use), or the supply of health services.
6. Healthy life expectancy, as measured by the number of years spent without disability (DFLE), increased during the last fifty years, due to a decrease of age-specific disability prevalence. However, international trends in DFLE are heterogeneous, with some countries showing stability or even decrease in the proportion of years spent without disability after age 65. Whether these results indicate real variation or differences in measurement of disability is still undetermined.

Future evolution of longevity and healthy life expectancy

7. Most projections of LE use historical trends in mortality rates or life expectancy as an input. Such an approach is based on the remarkable stability of the changes over the past 200 years. However, most projections based on past trends consistently underestimated the increase in LE.
8. Epidemiological approaches use information on the determinants of mortality by cause of death (e.g. smoking, obesity...); they provide results that are not very different from those of extrapolative methods.
9. In summary, most methods predict that LE_0 will increase up to 2050 in men as in women in industrialized countries such as Switzerland, with estimates ranging from five to nine years adding to the current figures.

10. Provisions of healthy life expectancy rely on projected total life expectancy, combined with projections of the prevalence of disability. Available estimates predict a longer DFLE in Switzerland. These provisions are often criticized because they fail to capture the complexity of the determinants of disability and the difficulty to interpret any trend (e.g., the development of new assistive technologies might have contributed to the decline in reported disability).
11. According to epidemiological projections, major upheaval in health would have a limited impact on health-adjusted life expectancy : in the absence of 20 major risk factors for diseases and injuries, the health-adjusted life expectancy would increase by about 5 years as compared to the current situation in 2000.

Recommendations

12. There is currently no definite argument in favour of a specific method of prevision. Thus, we recommend to provide estimates based on several methods, e.g., (i) a method using a set of observed lowest mortality rates at a given time, (ii) a method using the epidemiological projections of the determinants of mortality (e.g., smoking, diet, etc.), and (iii) a method estimating the effect of the projected evolution of education and socio-economic status on the future mortality rates.
13. When using historical periods to establish future trends, the historical period should be at least as long as the projection period. Further, the mortality experience of other populations should be assessed, and cohort effects should be carefully considered.
14. A closer monitoring of longevity is needed. This means that mortality rates of the oldest-old should be followed up not only with cross-sectional estimates, but also with appropriate cohorts.
15. Another aspect is to rethink the system of cause of death because of its currently low information content.
16. Finally, in order to develop methods using health related information, epidemiological knowledge on the oldest population should be improved through health surveys, which should also include those living in institutions.
17. A committee on the future of longevity and healthy life should be set up to further address these issues.

Introduction

18. In many developed countries ¹, including Switzerland ², the ongoing increase in life expectancy is driven by the mortality decline of the old and the very old persons. Further, because the main causes of death are related to degenerative diseases (cardiovascular and cancer are responsible of 60% of causes of death in people aged more than 60), the determinants of mortality take place in the adult life, or even before ³.
19. In this context, the Swiss Federal Office of Statistics decided to mandate a small group of experts to summarize the current information on past trends in mortality and longevity, as well as on their future evolution in Switzerland and other industrialized countries. The scope of this report is to provide a critical review of the literature on the future evolution of mortality in developed countries and some suggestions regarding the most promising approaches of projections. This report will also address the health of the older persons, in the perspective of the healthy life expectancy.
20. The first two chapters start with a couple of definitions, then with an analysis of the past trends in life expectancy and health indicators. The future evolution of mortality and health are presented in the two next chapters. A set of recommendations is finally developed, on the strategies of and on what is needed in term of information for monitoring and projecting longevity.

Past and current trends in mortality and longevity

Definitions

21. Longevity is defined here as the duration (or the length) of life as observed in population or in individuals. The oldest and still most used indicators of longevity are life expectancy at birth (LE_0) at a population level, and maximum life span (MLS) at the individual level.
22. Several other indicators have been proposed to overcome the limitations of both LE_0 and MLS. They allow examining more closely the patterns of old age mortality. These indicators are increasingly used, including in this report. They are briefly presented below.
23. Indicators of longevity:
- *Life expectancy at birth (LE_0), or at any age x (LE_x)* : An estimate of the average number of additional years an individual could expect to live if the age-specific death rates for a given year prevailed for the rest of his life ^a. It is the mean duration of life in a population at a given calendar time. LE_0 is still a popular indicator of longevity ⁴⁻⁹, but it is sensitive to early mortality, in particular to child and infant mortality. This is a drawback when late mortality is the driving force of longevity ¹⁰⁻¹².
 - *Median age at death (Med)* : age that separates the younger half of the deceased from the older half. Med is usually given as the average value of the yearly median ages within a period of study.

^a See website : www.prb.org

- *Modal age at death (M)* : the most common age at which adult people die (i.e. age with the maximum number of deaths) at a given period. M is sometimes difficult to estimate because of the flatness around the modal area ¹³, and smoothing techniques are in general needed. M is a companion indicator of the "normal life duration", a concept introduced by Lexis in 1878 ¹⁴. Briefly, the concept distinguishes three parts in the mortality of a population : (i) one part related to infant and child deaths, i.e., premature mortality, (ii) another part related to aging-related deaths (i.e., the late mortality or the "normal" deaths) and (iii) an intermediate part where premature and aging-related deaths overlap. In this perspective, M was viewed by Lexis as the central value around which aging-related deaths are normally distributed (i.e., the mode is an estimate of the arithmetic mean of the normal life duration), although this is wrong, as mortality is skewed towards younger ages, with the mode higher than the mean. According to this hypothesis, the right-hand side of the distribution of age of deaths (deaths occurring after M) gives the parameters of a normal distribution centred on M (i.e., the left-hand side of the distribution is constructed by symmetry of the right-hand side). Kannisto later suggested that M and the standard deviation above it provide a good account of longevity under a given mortality regime ¹⁵.
- *Maximum life span (MLS)* : the maximum number of years a member of a population has been observed to survive, at a given period. MLS has the advantage to be based on straightforward information, that may however be of poor quality, due to the inaccuracy of reported ages of very old persons. Also, as a single event, it depends on the size of the population under study, although this might not be the major determinant of change in MLS. In Sweden for example, MLS increased from 101 years to 108 years between the 1860s and the 1990s. Of this increase, 72.5% is attributable to a decline in mortality above age 70, only about 12% to the increasing size of successive birth cohorts, and about 16% to mortality reductions below age 70.
- *Life endurancy* : the age reached by 1 per 10'000 (or 1 per 100'000) individuals of a cohort.
- *Number of deaths at age 100 and over*: as the absolute number of deaths occurring at age 100 and over, this indicator also depends on the size of the population.
- *Number of centenarians/ supercentenarians* : number of persons aged 100 and over, respectively 110 years and over, at a given period in a population. It also depends on the size of the population.
- *Centenarian rate (CR_x)* : incidence of centenarians in a given cohort, estimated by the number of survivors aged 100 at a given date divided by the size of the corresponding cohort at age x (for example: CR₈₀ is the number of centenarians observed in a cohort of people alive 20 years before, i.e. when they were aged 80 years).

24. Indicators of concentration, verticalization and rectangularization:

- *Rectangularization of the survival curve* : pattern of mortality characterized by an important proportion of persons surviving until old age and dying over a short period of time (i.e., with a compression of mortality within a short period).
- *Standard deviation above the mode (SD_(M+))* : measures the dispersion of the deaths occurring above the modal age at death. When SD_(M+) decreases, then the survival curve becomes more rectangular.

Longevity and mortality

25. Most of the available studies are based on population census and vital statistics, i.e., on an information system available only since the mid-19th century in the developed countries.
26. A substantial amount of information is provided by demographic history ¹⁶ on the pre-modern patterns of mortality, including in Switzerland. Although this literature will not be commented here, at least one observation deserves attention. In Europe, there is a slow and steady increase of the life expectancy at birth (LE_0) since the Middle-Age, i.e., well before the sanitary and hygienic reforms of the late 19th century ¹⁷, possibly in relation with factors such as diet, infectious environment, etc... This raises the possibility that future changes in mortality might be determined by unexpected changes of currently unknown factors.
27. Although LE_0 is not the most appropriate indicator in countries where mortality is low among young and middle-aged people¹⁸, it is still the most widely used indicator of longevity, and hence, the most widely available. It also has the advantage of being easily interpreted. The paragraphs below provides an analysis of the recent evolution.
28. Figure 1 shows that LE_0 has increased steadily in Switzerland since 1876, from about 40 and 42 years for men and women, respectively, to the current values of 79 and 84 years ². In other words, LE_0 almost doubled in both genders, with a yearly increase amounting to about 4 or 5 months from 1876 until 1950, slightly faster among women than among men. It then dropped off to a slower rhythm, about 3 months per year, during the period 1950-2000.
29. The increase in LE_0 was first attributable to the decline in infant and childhood mortality (which probably started in the first half of the 19th century).
30. In the 1950s, a new pattern of evolution emerged : (i) LE_{60} and LE_{80} began to increase in both gender, and (ii) a gender gap in LE_0 appeared and widened, with women gaining more years of LE_0 than men. This gap is partially attributable to causes of death (e.g., cardiovascular or cancer) which are sensible to lifestyle habits (e.g., smoking or alcohol use). The gap peaked in the 1970s. Since the 1980s, the gender gap diminished, partially due to the evolution of lung cancer mortality, much more favourable among men than among women ¹⁹.

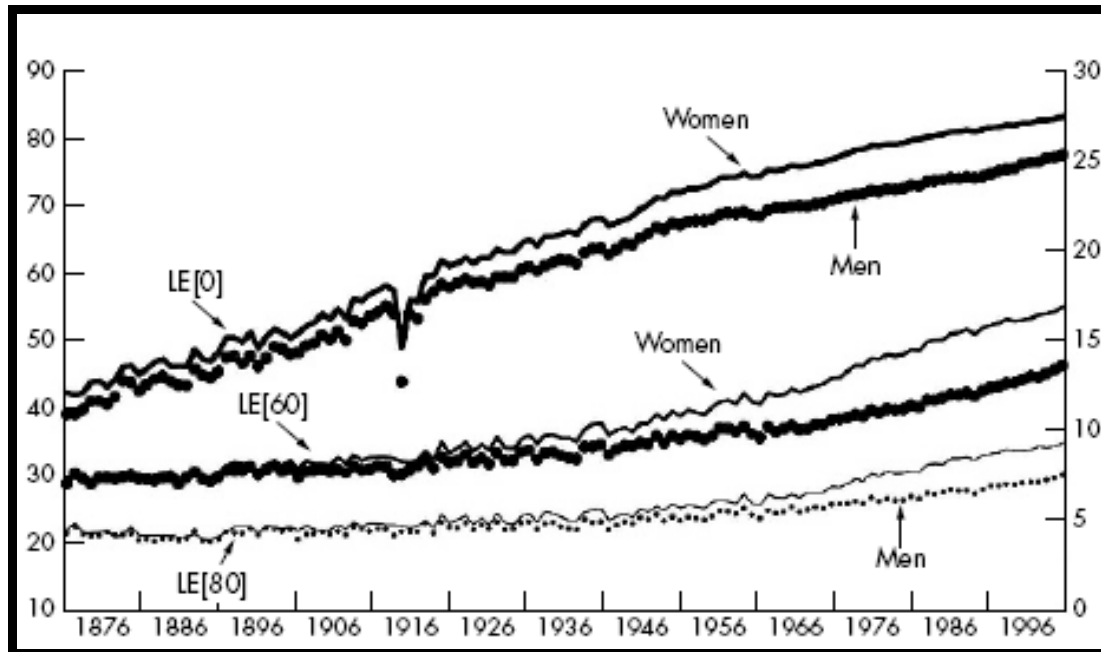


Figure 1. Life expectancy at birth (LE_0), at age 60 (LE_{60}), and at age 80 (LE_{80}), by gender. Switzerland, 1876-2000 (Source: Robine J-M, Paccaud F. 2005 ²)

31. Figure 2 shows the evolution of both the modal age at death (M) and the maximum age at death (MLS). The rising trends of both indicators is less marked than the one of LE_0 . M increased from 70 to 84 years for men, from 70 to 88 years for women.
32. M started to increase well after LE_0 . Before the 1920s, M did not change, fluctuating between 70 and 75 years. In women, M increased at a rhythm of two months per year, from 75 years in 1921-1925 to almost 90 years in 2001-2005. In men, M increased at a slower pace (less than half a month per year) from the 1920s until 1946-1950. It then ran in parallel with the women. Overall, the pattern of increase is similar across genders, although faster for women.
33. In both gender, there is a secular decline of the difference between M and LE_0 , from 30 years (about 70% of LE_0) to 6 years (about 7%), related to the decline in children mortality that previously had a major impact on LE_0 .
34. The same Figure 2 shows the increase in MLS, with an acceleration from the 1950s. MLS was about 102 years between 1880 and 1920, then reached 104 years between 1920 and 1960. It currently reaches 110 years, with higher values for women than for men. The pattern of increase is similar across genders.

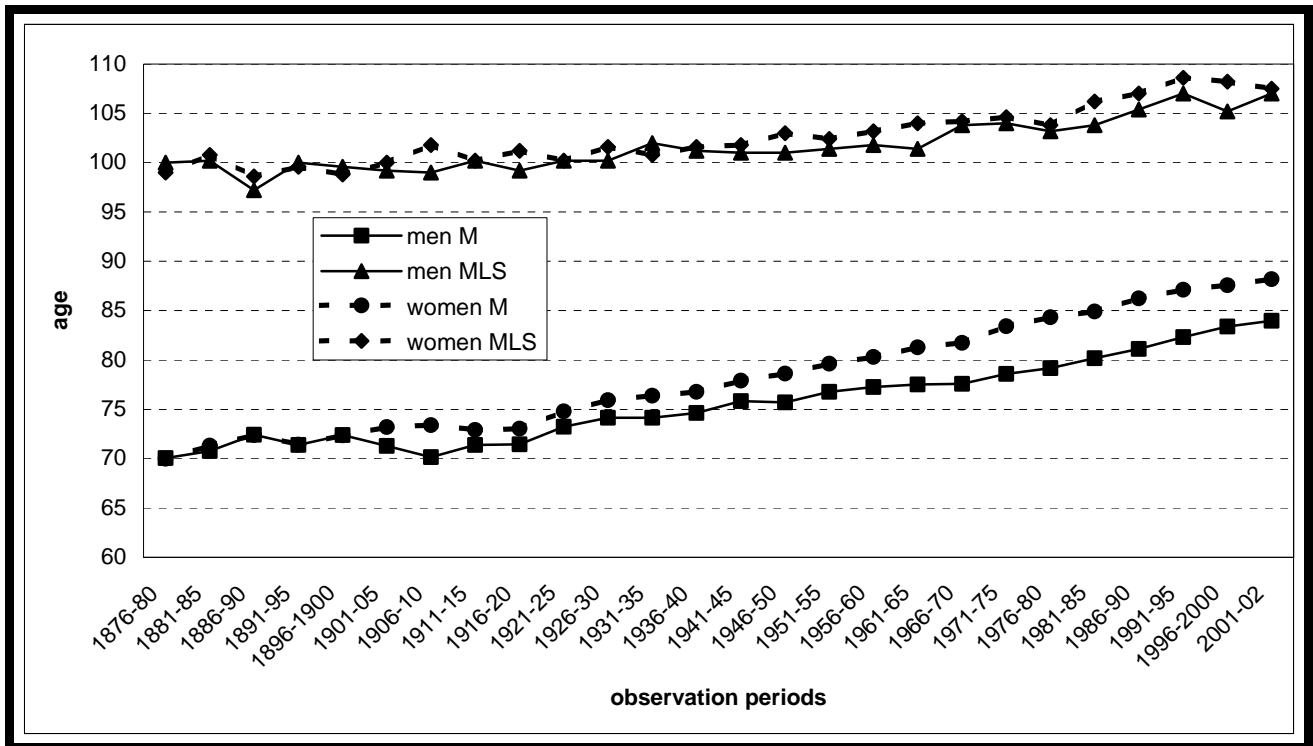


Figure 2. Secular trends in modal age at death (M) and in maximum life span (MLS, in both genders. Switzerland, 1876-2002. (Source: Cheung SL, Robine J-M, Paccaud F, et al., personal communication)

35. Another indicator reflecting the decline in old age mortality is the number of deaths occurring at age 100 and over, that began to increase in the 1950s, as shown in Figure 3. Although there is a large difference in the absolute numbers of male and female centenarians, the increase rate is similar across genders, as shown in the insert of the same Figure 3.

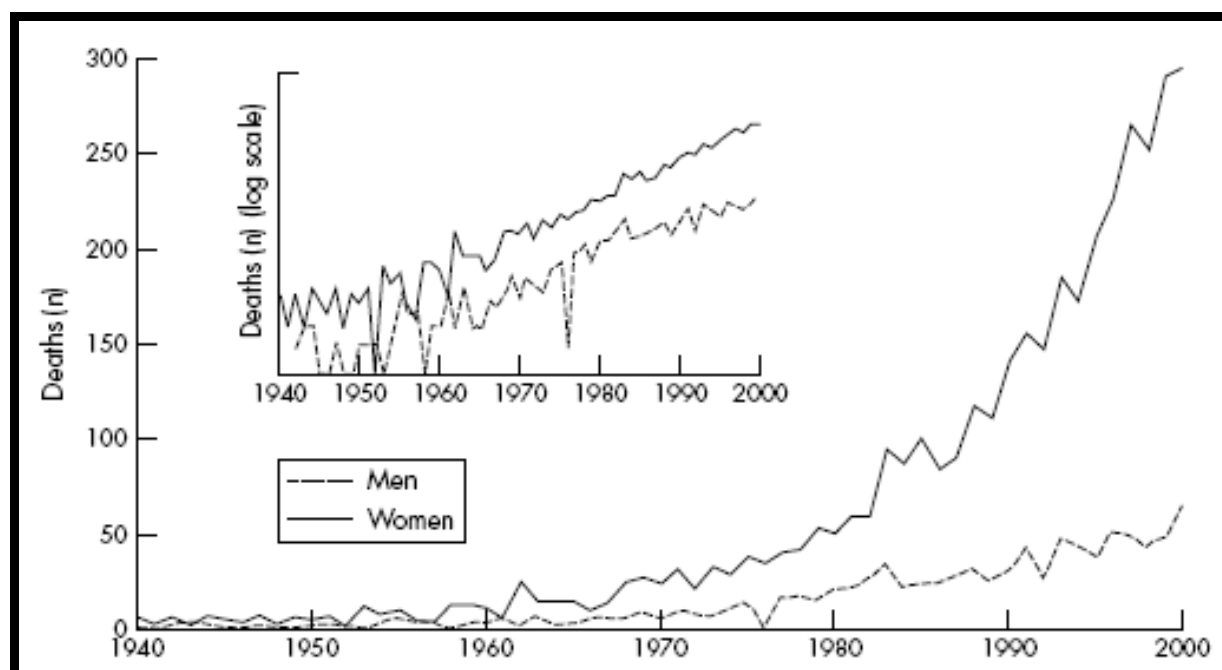


Figure 3. Number of deaths at age 100 and over, by gender, Switzerland, 1940-2000 (Insert shows the same data, with the number of deaths on a log scale). (Source: Robine J-M, Paccaud F. 2005 ²)

36. Table 1 disentangles the determinants of the increase in centenarians, from the cohort 1870 to the cohort 1900. For females, the number of centenarians has increased by a factor of 12.5. One part is due to the increase in the cohort size by a factor of 1.2. The remaining effect is attributable to the mortality drop, which is broken down into (i) an effect of early mortality (between birth and age 80), and (ii) an effect of late mortality (between 80 and 100). The multiplicative model for the increase in centenarians thus includes three factors of change (size of the birth cohort and two elements of mortality) to determine the increase in female centenarians ($1.2 * 2.3 * 4.5 = 12.5$). According to this, the drop in mortality after 80 explains more than half of this increase, the drop in mortality from birth to 80 explains another third.

37. Similar proportions can be found among males, as shown in the same Table 1.

	<i>Males</i>			<i>females</i>		
	<i>1870</i>	<i>1900</i>	<i>factor</i>	<i>1870</i>	<i>1900</i>	<i>factor</i>
<i>Cohort sizes</i>						
• <i>At birth</i>	40,570	48,223	1.2	38,638	46,093	1.2
• <i>at 80</i>	4,086	9,065	2.2	6,185	17,304	2.8
• <i>at 100</i>	9	53	6.2	23	294	12.5

Table 1. Determinants of the increase in the number of centenarians: cohort size at selected ages and increase factors. Switzerland, 1870 and 1900 (Source: Robine J-M, Paccaud F. 2005 ²)

38. As a result, the number of people aged 100 and more increased rapidly, more than doubling every ten years. Note that the centenarians doubling time shortened over time. This is shown in Figure 4.

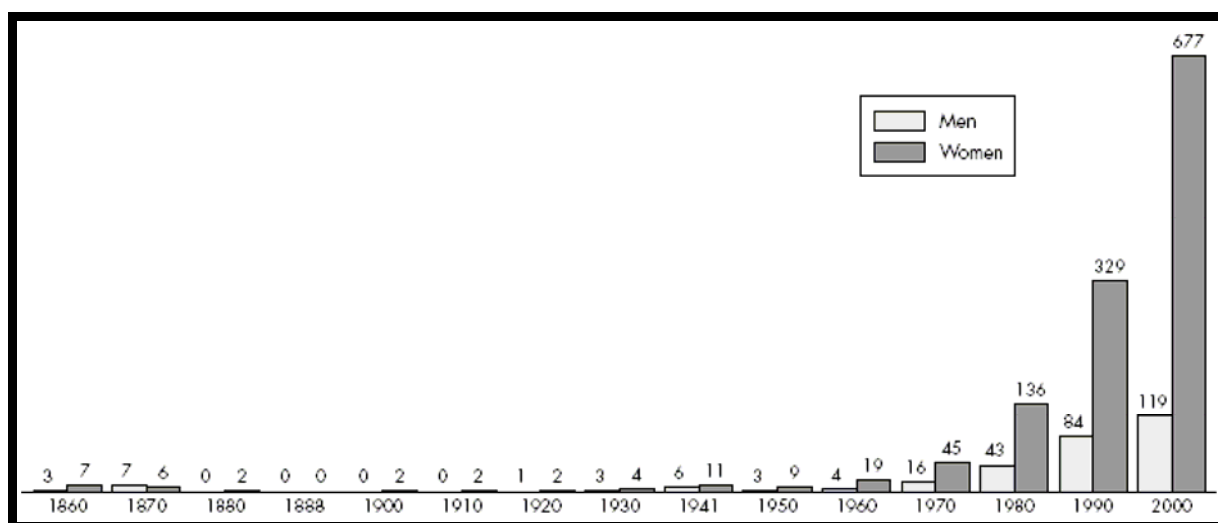


Figure 4. Number of people aged 100 and more. Switzerland, census data, 1860-2000. (Source: Robine J-M, Paccard F. 2005 2)

39. Table 2 shows the centenarian rates at birth (CR_0) and at 60 (CR_{60}) (see definition on §23 above). CR_0 and CR_{60} increased in both genders. Overall, CR_0 varied from 1.5 centenarians per 10,000 births in 1860 (.8 for males, 2.2 for female) to 38.6 in 1900 (11.6 for males, 66.8 for females). The increase was more marked among females.

40. As expected, values are higher for CR_{60} , but follow a similar pattern: CR_{60} increases from 2 to 22 for males, from 5 to 100 for females. A slowing down in the increase of CRs is apparent since the 1980s.

41. The advantage of females over males is striking: female CR_0 is always larger than male CR_{60} , and this advantage increases over the period. The same Table 2 shows that the ratio CR_{60}/CR_0 is always larger among males than among females, suggesting that the selective effect of early mortality is stronger for males than for females. A further point to note is that, in both genders, the ratio CR_{60}/CR_0 decreases over the period: this is compatible with a stronger decrease in mortality after the age of 60 than before this age.

	CR_0		CR_{60}		Ratio CR_{60}/CR_0	
	males	females	males	females	males	Females
1960	0.8	2.2	2.2	4.8	2.8	2.2
1970	2.2	6.5	5.7	13.7	2.6	2.1
1980	5.6	16.3	13.5	32.1	2.4	2.0
1990	6.2	38.2	13.0	62.6	2.1	1.6
2000	11.6	66.8	21.6	99.3	1.9	1.5

Table 2. Centenarian rates for cohorts at birth (CR_0) and at age 60 (CR_{60}). Switzerland, centenarians at census 1960, 1970, 1980, 1990 and 2000. (Source: Robine J-M, Paccaud F. 2005 ²)

42. There are several ongoing studies on the mortality trends in older people in Switzerland. In general, the observations are compatible with a compression of mortality ²⁰. This was already visible in an earlier work, suggesting a narrowing of the distribution beyond the mean age at death ²¹. This can be seen on Figure 5, showing the evolution of the pattern of distribution of age at death for four periods in women.

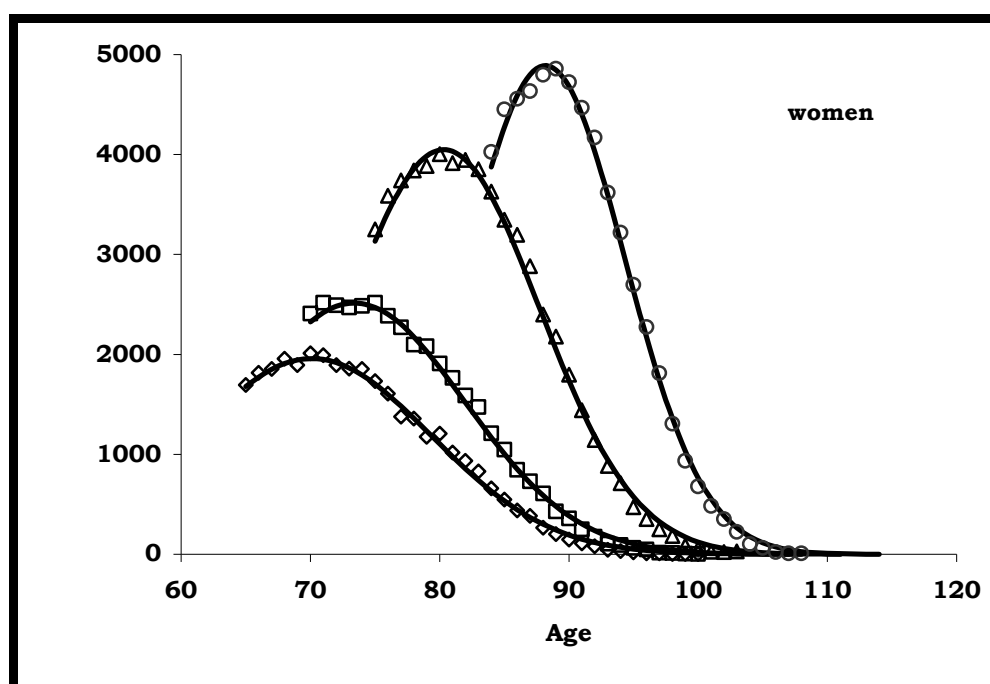


Figure 5. Distribution of age at death: empirical (dots) and fitted densities (lines). Women, Switzerland, four periods (from left to right: 1876-80, 1906-10, 1956-60 and 2001-2) (Source: Cheung SL, Robine J-M, Paccaud F, et al., personal communication)

43. Demographic information show a continuing decrease of mortality even in low mortality populations, suggesting that there is still further room for improvement in mortality and life expectancy. In other words, the current pattern is a compression of mortality occurring around an increasing mean age of death.

Other countries

44. Figure 6 shows LE_0 as reported for 2005 in selected countries, including Switzerland for comparison purposes. Two observations are worth mentioning. First, in all countries, there is a substantial gap between women and men. Although biological differences make the gender gap likely to persist, this variability can be interpreted as a possible room for improvement for males. Second, even among the developed countries displayed in this Figure, there is a gap of about 6-7 years in LE_0 . Again, these gaps are important because they quantify possible gains for those with the low values of LE_0 .

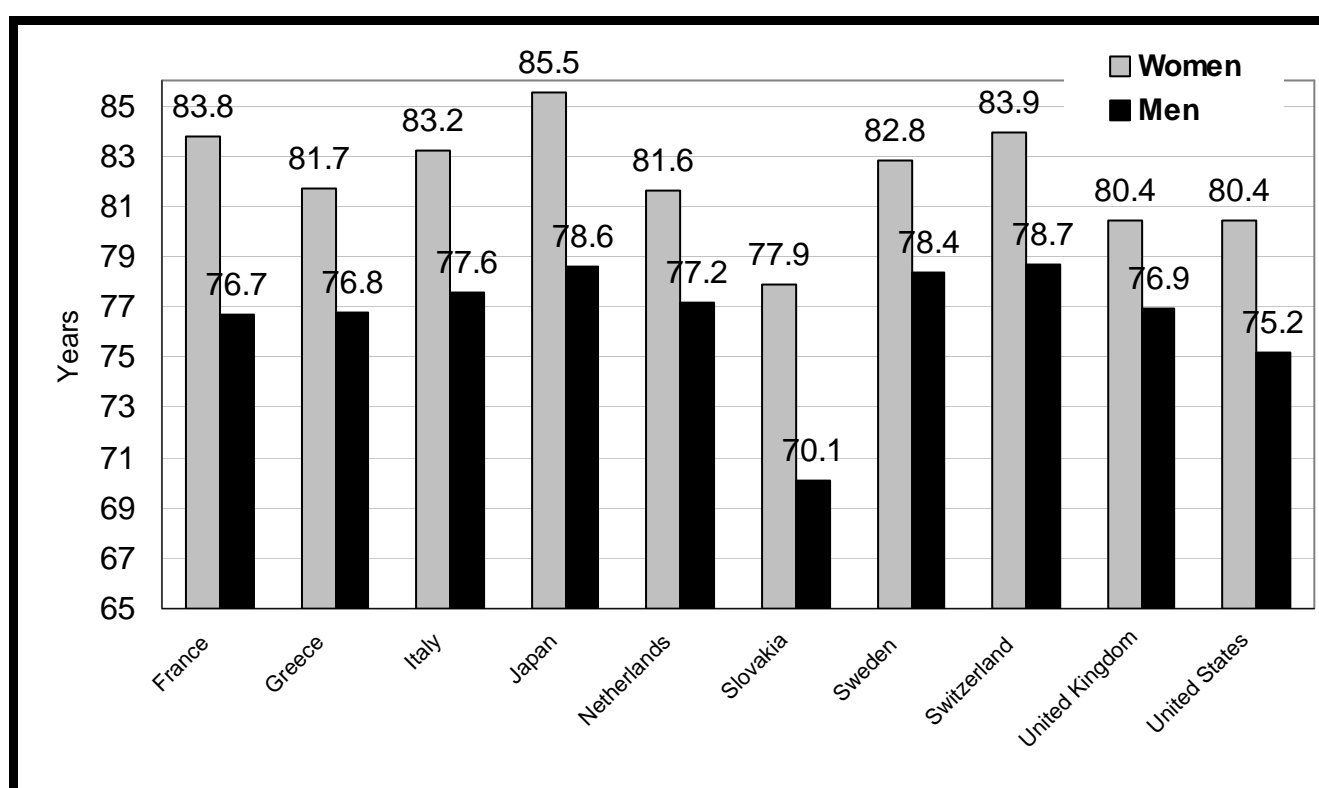


Figure 6. Life expectancy at birth (LE_0) in selected countries, by gender. OCDE, 2005 (www.oecd.org).

45. Comparing longevity between countries is difficult prior to the 20th century, due to the scarcity of credible data. In general, most European countries show a pattern similar to the one observed in Switzerland, often with a gap of a couple of years : LE_0 is increasing since the middle or the end of the 19th century, and continued to increase throughout the 20th century (see Figure 9, page 36 and Figure 10, page 36).

46. With LE_0 reaching 75 and 85 years in men and women, respectively, Japan is enjoying the highest LE_0 worldwide in 2002.

47. In the US, trends in LE_0 from 1900 to 2000 also show a steady increase, however less marked since the 1980s²². As compared to the highest figures recorded, US LE_0 was 10 years shorter in the early 20th century, and then converged to the highest life expectancies, with a current deficit of one year in 2000⁷. LE_0 increased from 68.2 years in 1950 to 77.8 years in 2004. LE_{65} and LE_{85} increased from 13.8 years and 4.7 years, respectively, in 1950 to 18.7 years and 6.8 years, respectively, in 2004²³.
48. A closer look to European data suggests that the evolution of European LE_0 followed a pattern common to all countries until the 1940s and the 1960s (Source: European Health Expectancy Monitoring Unit, www.ehemu.org). After that, the evolution of LE_0 followed three specific patterns (see Figure 11, p. 37, and Figure 12, p.38) :
- a group of "high convergence" countries (which includes Switzerland), in which the LE_0 did increase steadily (i.e., without slowing down during the 1960s), resulting in the currently highest LE_0 in Europe (83-84 years for women, 78-79 years for men);
 - a group of "low convergence" countries (which includes England and Wales, Belgium) which is characterized by a slowdown in the LE_0 increase during the 1960s. LE_0 then converged in the 1970s to a value which is about two years below the LE_0 reached by the "high convergence" countries.
 - a group of "divergent" countries, which include most of the Eastern Europe countries, but also Denmark, Norway and the Netherlands, show a plateau or even a decrease in LE_0 .
49. These three patterns of evolution result in significant differences in LE_0 between European countries, reaching a maximum of twelve years for men and seven years for women in 2002-2003 (when comparing countries of the Eastern Europe and countries like France or Switzerland). Most recent data suggest that the divergence is enduring. In the Netherlands, for example, an unexpected and sudden reversal in old-age mortality decline occurred around 1980, leading to a decrease in life expectancy in men, and to a plateau in women.
50. The reasons underlying the make-up of these three groups are unclear. They are likely to be related to crises in the social and health environments, perhaps common among the countries belonging to the same group of pattern of evolution^{24;25}. As noted by Bongaarts²⁶, this divergence in Western Europe is largely due to differences in smoking mortality. Regarding the Netherlands, trends in smoking mortality are a partial explanation for the stagnation in mortality decline, and other factors are difficult to identify, as their relation to specific causes of deaths is unclear²⁴. Moreover, inaccuracies and secular changes in the coding of causes of deaths make these analyses complex. Several detailed analyses of the situation have been produced in the Eastern countries²⁷⁻²⁹, including by an international group based in Warsaw^b. Analysis of causes of death are not very useful, because of the poor quality of the data for deaths occurring after 80 years³⁰.
51. The trends in LE_{65} are shown in Figure 13, p. 39 and Figure 14, p. 39. In most European countries, the decrease in old age mortality became obvious from the 1950s onwards. Globally, LE_{65} showed a one-year increase between 1996 and 2002. In 1996, the largest differences between European countries reached five years in both genders.

^b <http://hem.waw.pl>

52. The modal age at death (M) was fluctuating between 65 and 75 years throughout the 18th and 19th century, and began to increase steadily from the end of the 19th century. Since the 1960s, M tends towards a value of 90 years for women in most European countries.
53. The higher M in female is observable from the beginning of the 20th century and reached a maximum in the 1970s. Since then, M also increases in men, although not enough to reduce the gender difference.
54. Sweden provides data on maximum life span (MLS) since 1861. There is a clear upward trend (more pronounced after 1969), increasing by 1.1 year per decade ^{11;31}. Similar trends are observed in other European countries and in Japan ^{11;32-34}. Part of this trend is attributable to the decrease of mortality in the oldest-old, adding to the larger number of survivors to old age and to larger birth cohorts ¹¹.
55. In Japan, from 1950 to 2004, M increased steadily from 73.7 years to 84.7 years in men, from 78.0 to 90.2 years in women ³⁵, i.e., 2.5 months per year. There is no sign of a slowing down for the increase of M, but the standard deviation above the mode ($SD_{(M+)}$), a measure of the distribution of death, decreased steadily until the 1990s in men and the mid-1980s in women. The $SD_{(M+)}$ then reached a plateau. The number of death occurring at and above the mode continued to increase, but at a slower pace than in the mid-seventies. These observations are compatible with a compression of mortality, that still continues but at a much slower pace, as $SD_{(M)+}$ remains constant.

Past and current trends in healthy life expectancy

56. To improve the understanding of the report, the following definitions of the indicators of healthy life are given:

- *Healthy life expectancy (HLE)* : average number of years an individual is expected to live in a specific health state. There are many possible dimensions of health, therefore many different health expectancies. In practice, HLE is often used as a generic name for the indicators combining mortality and health status.
- *Health-adjusted life expectancy (HALE)* : Average number of years that a person can expect to live in "full health" by taking into account years lived in less than full health due to disease and/or injury ^c.
- *Disability-free life expectancy (DFLE)* : average number of years an individual is expected to live without disability, i.e. without limitation in daily living activities such as bathing, dressing, walking, etc. DFLE combines age-specific mortality with age-specific prevalence of disability (more rarely, with age-specific incidence of disability). Like LE, DFLE may be computed at each age x.
- *Ratio DFLE_x/LE_x* : ratio of disability-free life expectancy over total life expectancy, reflecting the proportion of remaining years (after age x) that are spent without disability.

57. LE_0 is a relevant health indicator as far as morbidity is dominated by rapidly lethal diseases. The increasing prevalence of degenerative and chronic diseases means that an increasing proportion of the population will suffer from diseases with a low risk of dying from them. Further, an important proportion of the population will suffer from disability from degenerative diseases ³⁶.
58. The relationship between longer life expectancy and health has been examined by Fries³⁷, who considered three scenarios of evolution ³⁸ (see Figure 7). According to the paradigm of compression of morbidity, the average age at first chronic disease or disability is postponed (III in Figure 7): if this postponement is larger than the increase in life expectancy, people will gain years of healthy life or, in other words, the period of morbidity from chronic diseases will be compressed at the end of life.
59. Another scenario (I in Figure 7) postulated a longer life with a constant age at the beginning of morbidity, i.e., an expansion of morbidity. Finally, the scenario II on Figure 7 assumes that the age at death increases in the same amount as the increase of the age of the incidence of degenerative disease : this is simple shift towards a longer life with a stable duration of unhealthy life.

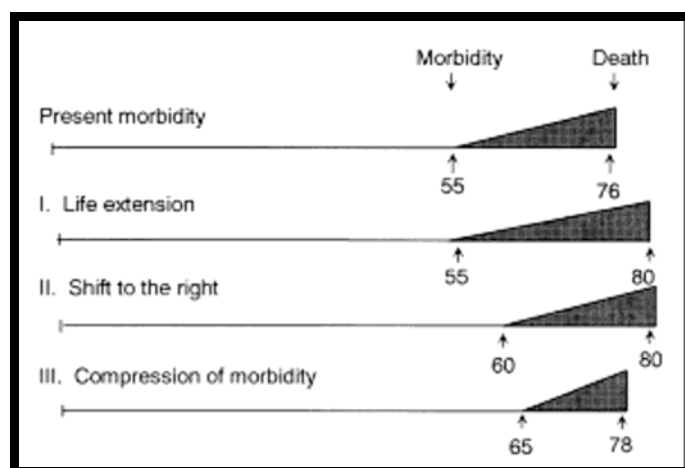


Figure 7. Possible scenarios for future morbidity and longevity. (Source : Fries JF, 2005 ³⁸)

60. In this context, new indicators have been developed since the mid-20th century, in order to take into account not only the years of life enjoyed by the population, but also the quality of life ³⁹. The concept of health expectancies was first proposed by Sanders in 1964 ⁴⁰, and then formalized by Sullivan who proposed a method to compute health expectancies ⁴¹. This method is based on the age-specific prevalence of healthy and unhealthy states (data gathered in cross-sectional health surveys) combined with age-specific mortality (from standard period life table).
61. An alternative, less convenient, approach is the multi-stage method, that uses incidence of health states instead of prevalence data and thus requires longitudinal observation to provide the transition rates between health states.
62. Many researchers have commented on the differences between the methods. Both seem equivalent when transition rates are smooth and regular over time ⁴². The Sullivan method can be generally recommended for its simplicity, its relative accuracy and the ease of interpretation.

63. As disability often represents the cumulative consequence of chronic diseases ⁴³, disability-free life expectancy (DFLE, see also §56 above) is a commonly used indicator of healthy life. This concept further allows to split life expectancy into years lived with and without disability. The assessment of aging populations commonly uses $DFLE_{65}$ in absolute number and as a proportion of LE_{65} . DFLE has been criticized as not incorporating information related to the severity of disability.

64. In contrast to mortality, information on disability has been collected over a shorter period, mainly from the 1980s, and in fewer countries. Comparing disability-related figures is therefore difficult, also because of differences in the definitions used (based on the presence of any incapacity in activities of daily living, for example in Katz' scale ⁴⁴, or in instrumental activities such as walking outside home, shopping, preparing meals).

65. Another problem is the difference in sampling : typically, the prevalence of disability is underestimated when measured only in community-dwelling persons, i.e., omitting institutionalised residents who are at higher risk of being disabled. Note that the Swiss Health Survey (an interview survey on a Swiss-wide sample of 20'000 community-dwelling persons since 1992) will include a sample of institutionalized persons from the 2007-8 survey on. More generally, the classical selection bias affecting all health surveys, with a disproportionate number of disabled persons among non-participants, is especially important in aged population, where the prevalence of disability is high.

66. Figure 8 displays $DFLE_0$ in year 2002 in various countries. In all countries, $DFLE_0$ is higher among women than among men, although the difference is less striking than for LE_0 .

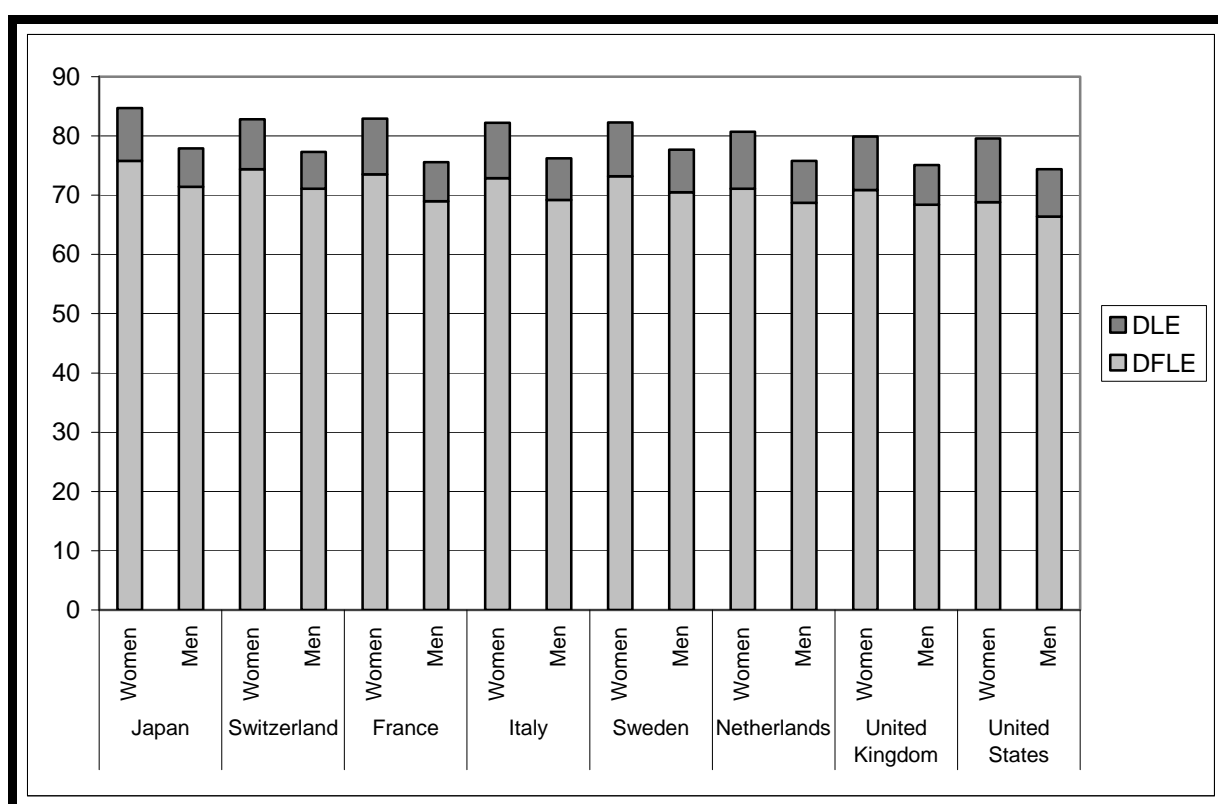


Figure 8. LE_0 by gender, with disability (DLE_0) and without disability ($DFLE_0$). Selected countries, 2001 (Source: Mathers 2003 ⁴⁵)

67. In Switzerland, between 1981 and 1997, the increase in $DFLE_0$ paralleled the increase in LE_0 ⁴⁶. This increase was observed in both genders (see Table 3). The simultaneous increase in both $DFLE_0$ and LE_0 suggests that the population is enjoying an "healthy ageing", i.e., ageing means here adding both years to life and life to years.
68. LE_{65} and $DFLE_{65}$ also showed an increase, although the gender difference is more marked : the proportion of years spent without disability (ratio $DFLE_{65}/LE_{65}$) varies according to the gender. Between 1981 and 2002, a compression of morbidity is observed in men as in women : the ratio $DFLE_{65}/LE_{65}$ increased from 79% to 83% for men, from 66% to 75% for women, in a context of strong increase of LE_{65} in both gender, from 14.6 to 17.5 years and from 18.5 to 21.1 years, for men and women respectively.
69. Both the 2002 figures and the evolution of the compression of morbidity between 1981 and 2002 vary between the genders. Between 1981 and 1997, women gained years of life without disability and experienced a decline in the number of disabled years : the proportion of years with disability significantly thus decreased in women, an evolution compatible with a compression of morbidity.
70. During the same period, men gained 15 months without disability and 6 months with disability ⁴⁶ : compression of morbidity was thus relative in men, as they gained some time with disability, although in a lower proportion than the time without disability. Moreover this compression occurred later than the one observed for women.
71. Although women have a longer $DFLE_0$ than men and gained more disability-free years, the absolute number of years spent with disability is higher in women. In 2002, LE_0 was 77.8 in men and 83.1 in women, and $DFLE_0$ was 73.7 years in men and 76.8 years in women : thus, on average, men would spend about 4 years in a disabled state, versus 6 years for women ⁴⁷.

	<i>Men</i>				<i>Women</i>			
	<i>LE₆₅</i>	<i>DFLE₆₅</i>	<i>DLE₆₅</i>	<i>DFLE₆₅/LE₆₅</i>	<i>LE₆₅</i>	<i>DFLE₆₅</i>	<i>DLE₆₅</i>	<i>DFLE₆₅/LE₆₅</i>
1981/82	14.6	11.5	3.1	79%	18.5	12.2	6.3	66%
<i>Change 1981-1997</i>	+ 2.1	+ 1.5	+ 0.6		+ 2.1	+ 4.1	- 2.0	
1997/99	16.7	13.0	3.7	78%	20.6	16.3	4.3	79%
<i>Change 1981-2002</i>	+ 3.5	+ 3.1	- 0.2		+ 2.6	+ 3.7	- 1.1	
2002	17.5	14.6	2.9	83%	21.1	15.9	5.2	75%

Table 3. Evolution of LE_{65} and $DFLE_{65}$, by gender. (Source: Höpflinger ⁴⁶, OFS ⁴⁷ and author's calculations)

Other countries

72. Caution should be applied when comparing healthy life expectancies among different countries, because of the quality of the data often varies, as well as the methods used to assess healthy life expectancy.

73. The OECD examined the trends in disability at age 65 years and over resulting from national health surveys in 12 countries. There was a clear decline in disability in 5 countries (Denmark, Finland, Italy, The Netherlands, the USA), two showed stability (Australia, Canada) and three (Belgium, Japan, Sweden) showed an increase. More importantly, the OECD study shows that the prevalence of disability in activities of daily living ranges from a low of 7% in The Netherlands to a high of 18% in the United Kingdom, suggesting differences in the assessment of disability as a partial explanation for these differences ⁴⁸.
74. The European Community Household Panel provides data and indicators to monitor the trends of DFLE between 1995 and 2003. In men, the gain in LE₀ was larger than the one in DFLE₀. The pattern is similar in women, though the changes are smaller. This suggests an expansion of morbidity rather than the compression as observed in Switzerland.
75. However, when LE₆₅ and DFLE₆₅ are analysed, the gains are similar for both indicators (see Figure 15, p. 40), like in Switzerland. The gender-specific secular trends of the ratio DFLE₆₅/LE₆₅ are used in Table 4 to characterize each EU country, i.e., if the evolution suggests (i) a compression of morbidity (defined as a relative change $\geq 5\%$), (ii) an expansion of morbidity (relative change $\leq -5\%$), or (iii) a stability ($-5\% < \text{relative change} < 5\%$).
76. Table 4 shows a diversity of evolution among these countries. Further, there is no strong correspondence across genders, i.e., the same country shows different evolution according to the gender. These differences cannot be explained, and might be attributable to methodological and cultural differences, but also to changes in institutionalization rates (as the study excludes institutionalised persons).

<i>DFLE₆₅/LE₆₅ (in %) trends ...</i>	<i>Men</i>	<i>Women</i>
<i>... decrease by 5% or more (expansion of morbidity, scenario I in Figure 7, p. 17)</i>	Denmark Netherlands Portugal Sweden UK	Germany Greece Ireland Netherlands Portugal
<i>... is constant (stability, scenario II in Figure 7, p. 17)</i>	France Greece Ireland Spain	Austria Denmark Finland France Spain UK
<i>... increase by 5% or more (compression of morbidity, scenario III in Figure 7, p. 17)</i>	Austria Belgium Finland Germany Italy	Belgium Italy Sweden

Table 4. Distribution of countries among categories of secular trends in the ratio DFLE₆₅/LE₆₅ (in %), by gender. EU countries, 1995-2001 (Source: Jagger C and EHEMU team, European Health Expectancy Monitoring Unit, www.ehemu.org)

77. Another study, based on six longitudinal studies on ageing (5 from Europe and one from Israel), reported a significant variation of the $DFLE_{65}/LE_{65}$ ratios across countries ⁴⁹. Italy had the lowest ratio, amounting to 75% and 83% in women and men, respectively, and Sweden the highest (83% and 93%). Note that these differences essentially result from different patterns in $DFLE_0$ and LE_0 . For example, Italian men enjoy higher life expectancy among the six countries, but with the lowest $DFLE$.
78. A Dutch study ⁵⁰ showed that the increasing number of years with disability were in fact related to mild disabilities. DLE_{65} with mild disability increased from 9.9 to 13.9 years in men (from 10.6 to 14.8 years in women), while DLE_{65} with moderate or severe disability showed a slight reduction. This can be interpreted as evidence for the theory of dynamic equilibrium, in which the increased prevalence of chronic disabling diseases is counterbalanced by a decrease in the severity of the disability induced by these diseases.
79. The effect of gender on disability is partly explained by differences in social and health related factors ⁵¹. However, the association between female gender and mobility problems is independent, probably mediated by musculoskeletal conditions and depressive symptoms. An alternative explanation is that women are more likely to report disease and disability than men.
80. Japan has limited data on the prevalence of disability, due to the fact studies did not include residents of institutions. In 2002, HALE at birth was 72 years for men and 78 years for women ^d. According to Schoeni ⁵², the prevalence of disability declined in Japan between 1993 and 2002. There would have been more than 1.1 million more disabled elderly in 2002 in an older population totalling 23 millions if disability had been constant over that period. Nevertheless, these results should be taken with caution as the decline in disability was not accompanied by a decline in functional limitations, suggesting that the results might be partially explained by changes in the built-in environment or developments in assistive technology.
81. In the US, studies found that the prevalence of disability increased during the 1970s, paralleling the increase in life expectancy ⁵³. A decline was then documented during the 1980s, with an acceleration in the 1990s, for both mild and moderate/severe disability ^{54;55}: the increase in $DFLE$ for both genders paralleled the increase in LE_0 . However, as a proportion of LE_0 , $DFLE$ increased only in persons with higher educational status, while those with lower education were still experiencing an expansion of morbidity ⁵⁶.
82. The most recent trends in the US have been analysed by Cai & Lubitz for the population aged 65 and over ⁵⁷. During the 1992–2003 period, $DFLE_{65}$ increased from 9.5 to 10.3 years, and DLE_{65} slightly decreased, mainly as a result from a decrease in severe disability and an increase in moderate disability. These trends result in HALE of 67.0 years in men and 71.0 years in women ^e. Finally, a crucial question is to what extent the rise in obesity will lead to a reversal in the trends in disability.
83. As a conclusion, trends in disability are heterogeneous. Moreover, several studies showed that an increase in the reported or diagnosed morbidity is not incompatible with a decrease in disability.

^d <http://www.who.int/whosis/database> [Accessed Feb 21st, 2008]

^e <http://www.who.int/whosis/database> [Accessed Feb 21st, 2008]

Summing up: lessons from the past

84. In Switzerland, life expectancy continues a steady increase that began sometime before the end of the 19th century for LE_0 , and in the middle of the 20th century for LE_{65} . The latter increased at a pace of 1-1.5 month per year in the 1990s. As in other countries, there is no clear sign that the rise in LE_0 might come to an end, although the yearly increase is less pronounced since the 1980s. The modal age at death, which can be interpreted as the "normal" mean longevity at a given time, fluctuated until the 1920s, and then increased steadily, at a yearly rate of 2-3 months. Adult variability of the age at death decreased during the last fifty years, compatible with a compression of mortality.
85. There was a widening gender gap in LE_0 throughout the 1900s, which then narrowed in most countries since the late 1980s. Another widening gap in longevity, also in Switzerland, is related to differences in socio-economic status ⁵⁸.
86. It is unclear what the driving forces of the continuing increase in life expectancy are.
87. In Switzerland, the 1950s marked both the end of the epidemiological transition (i.e., with the disappearance of infectious diseases as a public health problem) and the beginning of a "post-transition area", characterized by the mortality decline in old and very old people. Causal mechanisms explaining the turning point of the 1950s are related either to contemporary improvements (i.e., changes directly benefiting the older people like antibiotic treatment for pneumonia, pension scheme, etc.), or to past improvements in the corresponding birth cohorts.
88. The improvement in the socio-economic environment has been massive in Switzerland after World War II, with direct benefits for the older persons at that time. A Swedish study on the period 1861-1999 ⁵⁹ suggests that mortality among people aged 90-94 is directly correlated with manufacturing wages (used as an indicator of general wealth). It is not obvious to identify massive improvements in the history of birth cohorts born in 1890 and after (i.e., those aged 60 and over in the fifties): they were confronted with two wars (less dramatic in Switzerland than elsewhere, but still a challenge) and a marked economic crisis in the 1930s.
89. One can also imagine that the explanation of the continued rise in life expectancy may lie in the self-propelling nature of some of these health improvements. For example, if younger adults are healthier, they get healthier children, who in turn will get even healthier children. This idea of self-propelling improvement might also be related to improvement in education. Further, the decline or delay in widowhood related to the decline in older persons mortality might also be associated to a longer life expectancy in those escaping to widowhood.
90. On the other hand, there is no fate dictating that LE_0 should continue on the same line. A plateau of LE_0 , or even a decline, has been observed in some European countries, probably related to crises affecting the socio-economical environment, life styles (in particular, alcohol and tobacco use) or the supply of medical services.
91. The favourable trend in LE is associated with a decrease of age-specific disability prevalence during the last twenty years in several industrialized countries, including Switzerland. Consequently, $DFLE_{65}$ increased during the last twenty years, as well as the proportion of years spent without disability, suggesting a compression of morbidity. Women consistently spend a longer proportion of life with disability, perhaps because of the differences in educational, social and health related factors. Globally, the male-female gap is lower for $DFLE$ than for total life expectancy ⁶⁰.
92. However, similar to trends in LE_0 , trends in $DFLE$ are heterogeneous, with some countries showing stability or even decrease in the proportion of years spent without disability after age 65.

Future evolution of longevity and healthy life expectancy

93. Predicting the future of mortality and morbidity means that one has some idea on their past and current determinants. Moreover, a model of the interaction between mortality, morbidity and determinants is needed. For the sake of clarity, the typology below presents two main approaches of predictions:

- *"demographic" approaches* :
 - projections of the past trends of mortality or life expectancy (cf. §95, p. 23)
 - projections based on limit distributions (cf. §124, p.27),
- *"epidemiological" approaches* (cf. §136, p.28), i.e., models based on the future evolution of diseases and their known risk or protective factors; these approaches include the evolution of healthy life expectancy;

94. Other approaches using for example a combination of the above mentioned methods are finally presented.

"Demographic" approaches : Projections of the past trends of mortality or life expectancy

95. Selected projections of LE_0 from demographic approaches are presented in Table 5, p. 32. According to Swiss Federal Office for Statistics, the forecasted LE_0 in 2050 are 85.0 years for men (ranging from 82.5 to 87.5 years according to the optimistic and pessimistic scenarios) and 89.5 (87.5 to 91.5 years) for women⁴⁷. From 2005, the annual increase is thus situated between 4 and 10 weeks for men, and between 4 and 9 weeks for women.

96. In these approaches, the past trends are either directly extrapolated, or used in mortality models ; several scenarios are usually considered (e.g., with various secular changes in mortality ratios, or with various reference periods, etc.).

97. Projections for the short run typically rely on a linear extrapolation of historical trends in log of mortality rates or life expectancy. Most studies in this group use a limit for life span, although others ignore such a limit (for the latter, see §123 and ff.).

98. Extrapolation without constraints usually produces implausible results in the long run. For example, linear extrapolation of past LE_0 trends for Denmark and Japan will lead to huge future differences between these two countries because the different past trends⁶¹. The same is true for extrapolation of male and female LE_0 . For example in most countries male and female LE_0 are converging. Simple extrapolation of these trends leads to crossover with male LE_0 exceeding female LE_0 .

99. Thus, choosing an upper limit to life span is a reasonable approach. Among the arguments for a limited duration of life⁶², the most important is probably the decline of physiological parameters associated with ageing in humans, with a loss of 80% of the functional capacity by age 80. A further demographic argument is the slowdown of the LE_0 increase, as observed in several countries, which can be taken as an argument in favour of an upper limit. However, this slowdown is paralleled by an accelerated decline in mortality at older ages. Moreover, the fastest decline of mortality has been observed in countries with the lowest levels of old-age mortality, i.e., the opposite of what is expected if mortality were pushing against an upper limit⁶³.

100. Although there are biological arguments in favour of an upper age limit, there is debate about the value of this limit. The many proposals for the maximum LE_0 found in the literature vary between 65 years (as proposed by Louis Dublin in 1928) to 85 years ⁶⁴ (with a maximum life span of 122 years).
101. Using a biodemographic approach, Olshansky refers to the schedule of age-specific death rates as an “intrinsic mortality signature”, that might change only when the forces of selection acting to maintain the genetic composition of a population are disrupted (either through environmental challenges, interventions, or diseases). This model estimated the maximum life expectancy being 85 years in 1990 ⁶⁵, with gender-specific limits of 82 years for men and 88 years for women. To get these estimates, death rates would have to decline at every age and for every cause by about 55% from levels existing in 1895. The authors claim the magnitude of this changes would be equivalent to the elimination of both cancer and heart disease.
102. Apart from biological determinants of mortality, man-made determinants should be considered. Studies report it is not unlikely that the development of innovative technologies benefiting the health of older persons will continue on the same line, contributing to the lowering of death rates ^{66;67}.
103. Another important issue is to set the observation period used for the linear model. Janssen and Kunst ⁶⁸ explored systematically the impact of choosing two reference periods (25- or a 50-year) on the projected mortality of people aged 80 and more up to 2050 in seven European countries (Switzerland not included). The objective was not to produce a forecast, nor to recommend a specific technique, but to show the different ways in which mortality forecasts could integrate knowledge about past mortality trends (reflecting the effect of duration of the historical period, sex, smoking and country). As recommended by Wilmoth²², the projections used indirect extrapolations of age-specific mortality rates instead of life expectancies because the latter has proved to be less insightful owing to lack of information on underlying changes in age-patterns of mortality.
104. Choosing a reference period of 25 years (1975-1999) instead of 50 (1950-1999) resulted in gains in LE_{80} , higher in men, but lower in women ⁶⁸; this obviously reflects the gender-specific changes in the secular trends. On average, for the seven countries together, the gain in life expectancy at birth at age 80 in men in the period 1999-2050 was 1.72 years and 2.13 years using the periods 1950-1999 and 1975-1999 as projection base, respectively. In women, corresponding figures were 3.78 and 3.39 years ⁶⁸.
105. Using non-smoking related mortality trends only ⁶⁸, gains in life expectancy were usually higher than those calculated using all-cause mortality. The projections based on non-smoking mortality should be considered with caution, as levels of smoking-related mortality were only estimated : detailed data were lacking. In men, the impact of the period used to project life expectancy also illustrated trends in smoking mortality, as using the period beginning in 1950 led to a higher projected gain ⁶⁸.
106. Projections by country show substantial differences in the magnitude of the gain in LE_{80} , explained by the variations in the pace of decline in old-age mortality over time. For example, for Norway, the stagnation of old-age mortality decline in the 1950s-1960s results in a lower gain in LE_{80} when using the period 1950-1999 instead of 1975-1999 as projection base.
107. The Lee-Carter method and its variants are the most frequently used methods to forecast mortality ^{69;70}. It is based on the linear decomposition of the logarithm of observed force of mortality at age x during year t ($\mu_x(t)$) into (i) a dominant component changing with calendar time, and (ii) an age component that remained fixed over calendar time.

108. As for linear projections of log of mortality rates, the Lee-Carter method may produce implausible age patterns in the long run if any rate trends differ, because these differences will be magnified in the projections.
109. By its very nature, the Lee-Carter method is extrapolative and projecting mortality in this way is likely to result in a continuous increase in life expectancy. Moreover, the forecasts (even when based on similar extrapolative procedures) are likely to imply increasing divergence in life expectancy in the long run. This contradicts the observation made by Wilson who documented a global convergence in mortality ⁷¹. Li and Lee considered how a particular extrapolative method can be modified to forecast mortality for countries by taking into account their membership in a group, rather than individually ⁶¹.
110. This method was used to model observed and forecasted sex-specific life expectancies and longevity in the United States from 1900 to 2065 ⁷². The method is currently used by the US Bureau of the Census.
111. Besides the application of the method to several countries by Lee ⁷⁰, the Lee-Carter method have been used in the G7 countries projections, and in long-range projections for the UN Population Division ^{73;61;6}.
112. In the model proposed by the U.N. Population Division, based on the Lee-Carter method as modified by Li, the increments of LE_0 over time decrease as higher levels of LE_0 were reached ⁷⁴. This allowed to limit LE_0 at 92.5 years in the medium-range projections.
113. For the long-term projections, the choice was made not to cap future LE_0 to 100 years, providing allowance was made for the necessarily modified shape of mortality schedule. Because the Lee-Carter method might produce divergence of LE_0 (instead of convergence) in the long-range projections, there was a proposal by Lee to modify the method to ensure non-divergence. In general, in the normal mortality scenario, mortality is projected on the basis of the models of change of LE_0 , using the period 1980-2000 as projection base, and choosing a medium pace of mortality decline. The long-range projections used a cohort-component method for the 100 years of projection then a simpler method for the rest of the projection period.
114. The Lee-Carter method has been compared to four variants (Lee-Miller, Booth, Hyndman-Ullah, De Jong-Tickle). The variants performed better in forecasting death rates, but there were no significant differences in accuracy for the short-term forecasts for life expectancy ⁷⁵.
115. Retrospective projections suggest that the Lee-Carter method tended to underestimate the gains in the US, but did well in France, Sweden, Japan, and Canada ⁷⁶. On the other hand, one of the Lee-Carter assumption (the decline of mortality at each age remains constant over time) contradicts current observations, i.e., the decline of mortality slowed down at younger ages and rose at older ages.
116. To overcome this limitation of the Lee-Carter method, a "shifting" logistic model has been proposed by Bongaarts ⁷⁷, in order to capture the age-specific pattern of secular change in age-specific mortality. In this model, the shape of the pattern of mortality rates by age is held invariant while the pattern itself shifts to higher ages over time as life expectancy rises. The projections made according to the Bongaarts' model compared well with the Lee-Carter one, being more robust when long range projections are concerned.
117. Pedroza ⁷⁸ developed a Bayesian approach which incorporates several sources of variation in the model when forming forecasts, and allow to handle missing data both in the time series and across age groups. It also takes into account the uncertainty associated with it.

118. Babel et al. ⁷⁹ recently developed a mortality model incorporating the "volatility" of mortality, containing two separate dimensions : (i) a common time effect over all ages and (ii) a common age effect of mortality evolvement. The time effect denotes the common level of mortality growth/decline, while the age effect is a stochastically independent age-specific term. Using a common time period from 1959 to 2002, life expectancies for 12 regions (including the Alps region, represented by Austria and Switzerland) are estimated in 2050. Beside traditional period life expectancies, more realistic but less commonly used cohort life expectancies are also calculated.
119. Using data from 1950 to 1999 in 7 European countries (excluding Switzerland), Janssen and Kunst ⁶⁸ predict an increase of LE_{80} averaging 2.3 years among men and 4.0 years in women by 2050. Assuming unchanged mortality rates at younger ages, a 2.3 years increase in LE_{80} would lead to an increase in LE_0 of 1.0 year in men and 2.5 years in women. As a comparison, adding these estimates of increase to LE_0 observed in 2000 in Switzerland results in projected LE_0 for 2050 of 78.2 and 85.5 years for men and women respectively, somewhat lower than the pessimistic scenario by SFOS.
120. Bongaarts examined trends in life expectancy when decomposed into juvenile, background, senescent and smoking-related mortality ²⁶. After removing the effects of juvenile, background and smoking mortality, the average rate of increase in senescent life expectancy over the past 50 years was 0.15 years per year, and was almost linear.
121. For projecting LE_0 , Bongaarts assumes that this trend is likely to continue for a few more decades, as there is no reason to believe that technological and medical advances will be less effective in reducing senescent mortality in the future than in the past. On the contrary, his model makes allowance for the future disappearance of the effect of declining juvenile and background mortality. Projections of life expectancy to 2050 for the two sexes based on this decomposition model (projecting separately trends in juvenile, background, senescent and smoking mortality) show that LE_0 is likely to increase by an average of about 7.5 years up to 2050 depending from the country (see Table 5, p. 32). Although less optimistic than those of Oeppen and Vaupel, because they assume little impact of further improvement in juvenile mortality, Bongaarts' projections are more optimistic than those of the United Nations.
122. Several authors provide confidence intervals around the estimates, generally increasing with the duration of the period of projection. For example, Lee and Carter forecasted a LE_0 increase of 10.5 years between 1990 and 2065, reaching 86.0 years with a confidence interval between 80.9 and 90.2 years. For 2050 and for Switzerland, Babel forecasted a 90% confidence interval for LE_0 of 4.9 years (for the period-related data) and 6.6 years (for the cohort-related data) in men; corresponding values for women are 5.6 and 9.2 years ⁷⁹. Providing sound confidence intervals was one of the aim of Pedroza in his Bayesian approach of the Lee-Carter model ⁷⁸.
123. Those avoiding the use of a life expectancy argue that this assumption repeatedly proved to be too conservative. Using the last 160 years showing a strikingly linear increase of LE_0 in women, the model used by Oeppen and Vaupel projects life expectancies throughout the 21st century by continuing this trend ⁸⁰.

"Demographic" approaches : Projections based on limit distribution

124. As noted above (see §93, p.23), demographic approaches include some assumptions on the extreme levels of mortality which will be reasonably reached. These approaches include combination of the lowest mortality rates observed by sex-age groups, or gaps between countries (i.e., considering the time needed by a specific country to catch up the most advanced countries), or estimate the lowest achievable cause-specific death rates. Some results of these approaches are displayed in Table 6, p. 32.
125. Achievable life expectancy can be estimated by combining the lowest mortality rates observed worldwide. Uemura collected the lowest age-specific mortality rates observed worldwide from 1950 to 1980, and calculated a potentially achievable LE_0 of 76.2 years in men and 82.1 years in women ⁸¹ (see Table 6, p. 32). As a comparison, observed LE_0 in Switzerland in 1980 was 72.4 for men and 79.1 for women ⁴⁷, and surpassed in 1999 the values calculated by Uemura.
126. More recently, Vallin and Meslé used a similar approach by combining the lowest age- and cause-specific mortality rates worldwide from 1950 to 2000. In 2000, the resulting LE_0 would reach 84.4 years in men and 88.9 years in women. A comparison between the highest observed LE_0 and the potential LE_0 resulting from the model showed that observed LE_0 reached potential LE_0 about 25-30 calendar years later (see Table 6, p. 32) ⁸². This is similar to Uemura's findings. This suggests that the potential LE_0 of 84.4 years (men) and 88.9 years (women) might be reached in the next two or three decades in countries with the highest current LE_0 . These values fall into the range of values estimated for Switzerland in year 2050 : 82.5-87.5 for men and 87.5-91,5 for women ⁴⁷.
127. Eradication of one or more causes of deaths and the resulting change in mortality rates have been used to predict achievable gains in life expectancy. One of the problem here is the interdependency between causes of deaths ⁸³.
128. In the 1970's, Tsai examined the potential gains in LE_0 when the three leading causes of death are totally or partially eliminated. The impressive gains theoretically achieved by total elimination do not hold up under the more realistic assumption of partial elimination or reduction. The number of years gained by a newborn child, with a 30% reduction in cardiovascular disease, would be 1.98 years, for cancer, 0.71 years, and for motor vehicle accidents, 0.21, years. Simulating the same reduction for the working ages (15 to 70 years) results in a gain of 0.43, 0.26, and 0.14 years, respectively for the three leading causes of death. The author concluded that even with a scientific breakthrough in combating these diseases, future gains in life expectancies for the working ages will not be spectacular ⁸⁴.
129. Nusselder estimated the gain in life expectancy resulting from the elimination in selected chronic diseases ⁸⁵. For example, eliminating heart diseases added 3.1 years for men and 2.7 years for women to LE_{65} , while eliminating cancers added 2.7 years and 1.9 years, eliminating diabetes added 0.1 to 0.3 years, for men and women, respectively (see Table 6, p. 32). The elimination of other chronic diseases, such as chronic obstructive pulmonary diseases or Parkinson disease, had a negligible effect on life expectancy. Authors did not try to estimate the cumulated gain resulting from the cumulative elimination of several groups of diseases.
130. Oeppen and Vaupel recommended using the observed gaps between countries and regions : the life expectancy in the countries with the highest life expectancy can set as the achievable limit for all ⁸⁰. This approach is close to the one computing life expectancy based on the lowest mortality rates. However, this approach is less significant in Switzerland which has the second highest life expectancy worldwide.

131. The models based on the "rectangularization" of the survival curve belongs to these "analytical" approaches. The theory states that at a given period, there is strong compression of mortality around a given age (and a stiffer resistance to further increase is expected), without stating what will be the value of this limit.
132. Based on the inverse relationship between the modal age at death (M , see also §18) and the standard deviation of the age at death above the mode ($SD_{(M+)}$, see also §18), Kannisto developed his hypothesis of an "invisible wall" to the extension of human longevity¹⁵: as the modal age at death increases, the right-hand slope of the distribution of age at death becomes more and more vertical.
133. Up to now, there are few observations backing up this hypothesis. One study reported clear signs of verticalization in Switzerland between 1969 and 1994, using the trend in distribution of age at death after 50 year²¹. Recent studies noted that rectangularization might slowly come to an end, with a shift of the mortality towards older ages⁸⁶.
134. There are few published data about the future evolution of $SD_{(M+)}$. A model of the curvilinear relationship between M and $SD_{(M+)}$ can be used to estimate the values of $SD_{(M+)}$ if M goes on increasing up to 95 years. Using data from France, Italy and Japan, $SD_{(M+)}$ was estimated to decrease up to the values of 5.5 to 6.5 years when M reaches the value of 95 years, while for Sweden, $SD_{(M+)}$ might take the value of about 4.5 years. This curvilinear relationship however suggests that $SD_{(M+)}$ will eventually reach some kind of floor values⁸⁷.
135. It is indeed unlikely that the survival curve will become totally rectangular, due to the heterogeneity of the human population, so that the question remains up to what degree of rectangularization the survival curve will evolve.

"Epidemiological" approaches : Projections based on health-related information

136. These models are using information related to the future evolution of lethal, degenerative diseases, which represents the major burden in ageing populations : in developed countries, heart disease, cancer and cerebrovascular disease are responsible of 60% of all deaths of people aged sixty-five or older²³.
137. Obviously, the credibility of the projections depends on the current knowledge about the evolution of known determinants of these diseases, i.e., the risk or protective factors related to the physical and social environments, to life styles, to health care and even to the genetics. The future of climate change, inequalities in health, diet, technological innovation or migration are classical examples. Factors considered in this report will be cardiovascular risk factors and diseases, smoking, cancers, and genetics.
138. These approaches are based on the expected future trends in prevalence of diseases and their determinants. Olshansky claimed that the reason why official forecasts consistently underestimated mortality was their reliance on static extrapolation of past trends, neglecting medical, behavioural or social factors that influence mortality⁸⁸. Therefore, he proposed a "multiple cause-delay model" to capture the impact of more favourable risk factors on mortality.
139. Because of its frequency, cardiovascular disease (CVD) might be the single most important determinant of the future of longevity. An analysis of mortality of people aged 75-84 years in Europe between 1970 and 1996 showed that the decline in total mortality was almost entirely due to the decline in CVD mortality, especially stroke⁸⁹. Mean blood pressure has fallen in Switzerland as in most developed countries^{90;91}, and this probably is the most important determinant of the decline in stroke mortality.

140. CVD mortality declined in most developed countries ⁹². In Switzerland, the decline of incidence between 1985 and 1993 was 3.6% for men⁹³. This secular decline is more marked as age increases, and its impact is therefore more marked in an ageing population ⁹³⁻⁹⁵. Further, available evidence show that there is still a room for improvement ⁹⁶ for diet ^{97;98} (including the reduction of salt consumption ^{99;100}), sedentarity, tobacco consumption, etc. There is also room to improve the care of hypertensive and dyslipidemic patients ^{93;101}. However, increases in total CVD mortality were recently observed in some central European countries and Greece. In the United Kingdom, CVD mortality among young men recently increased for the first time since two decades, perhaps as a consequence of unfavourable trends in risk factors, especially obesity and diabetes ¹⁰².
141. CVD mortality also matters to explain the gender difference of overall mortality. Currently, gender differences in CVD mortality rise steeply with age in parallel for both genders, but the female rates are those observed 5-10 yr earlier in men ¹⁰³. In the US, the levels of elevated blood pressure (with or without medication) have declined for older men but have increased for older women ²³.
142. Trends in cancer incidence are heterogeneous. Between the 1960s and 2002, the contribution of a reduced cancer mortality to the increasing LE₀ was less than 1 year, as compared to a contribution of almost 3 years from cardiovascular diseases ¹⁰⁴. However, because of the decline in CVD mortality, the cancer mortality increased its contribution to the overall mortality decline after 1990.
143. The evolution of gender differences in mortality is consistent with smoking patterns. Recent changes will probably reduce sex differences in mortality in the coming decades ¹⁰⁵. An analysis of the trends in male and female life expectancy and of the proportion of deaths attributable to smoking allows determining the effect of smoking on LE₀ ²⁶. In year 2000, data from 16 countries suggested that smoking reduced LE₀ by 1.0 year in women and 2.4 years in men; corresponding figures for Switzerland were 0.5 and 1.9 years.
144. Janssen and Kunst ⁶⁸ explored systematically the impact of choosing non-smoking related mortality instead of all-cause mortality, this approach yielded to higher gains of life expectancy in women. Bongaarts also estimated the impact of smoking on trends in LE₀ during the last 50 years. Even after eliminating the effect of smoking, LE₀ remains lower in men than in women.
145. Because of its consequences on CVD, diabetes and cancer, obesity might play a crucial role in the evolution of longevity in the next decades, as its prevalence increases in several industrialized countries. According to Olshansky ⁹, LE₀ was reduced by 4-9 months in the US in 2000 because of the current frequency of obesity. Based on its future trends, obesity could reduce LE₀ by two to five years in the coming decades (see Table 6, p. 32).
146. An effective control of hypertension could add 75 million DALYs, and eliminating diabetes would add 90 million life-year equivalents ¹⁰⁶.
147. Body mass index (BMI) also increased among older people. In the US, after remaining roughly stable in the 1970s, the proportion of non-institutionalized older women and men who are obese (BMI > 30kg/m²) increased among older men from 19 percent in 1988–1994 to 26 percent in 2001–2004, and among older women from 23 percent in 1988–1994 to 31 percent in 2001–2004. As a consequence, the prevalence of diabetes has increased among older people in several countries. In the US, this increase was from 18% in 1988–1994 to 25% in 2001–2004 ²³.
148. In Switzerland, obesity currently affects about one in ten adults, but overweight is found in almost one in two persons. However, the effect of overweight on longevity seems negligible ¹⁰⁷.

149. However, the relationship between obesity and CVD is more complex than initially thought. In the US, obesity did increase between the 1970s and the early 2000s, but the overall cardiovascular risk profile of the population has improved, mainly because of the reduction in smoking and better control of blood pressure ¹⁰⁸. Another study showed that the association between BMI and blood pressure has decreased over time ¹⁰⁹.
150. Diet has a substantial effect on survival ¹¹⁰. A healthy Mediterranean-type diet has been shown to reduce mortality risk by 30% in older women ¹¹¹.
151. Genetic influences on human life span and longevity are under study. Within a given birth cohort, there are considerable variations in life span. Twin studies suggested that about one quarter of the overall variation in lifespan might be accounted for by genetic differences ^{112;113}.
152. The rapid increase in LE_0 throughout the past century is unlikely to be due to genetic factors, although some authors believe that there is a possible role for a selection mechanism favouring long survival ¹¹⁴.
153. The impact of health services on longevity are debated and thus, the impact of potential developments in health care. Some experts claim that major discoveries are likely in the next few decades and that they will impact on life expectancy ^{115;116}, while others are sceptical ¹¹⁷. In any case, there is still room for improvement only by a better coverage of people with existing effective intervention, e.g., by increasing the coverage by vaccination ²³.
154. With joint replacements (knee and hip), cardiac revascularization procedures (angioplasty and bypass surgery) has become a substantial part in improving functioning and quality of life in recent years. The rate for bypass surgery increased during the 1980s and 1990s. Coronary angioplasty was introduced in the late 1970s : between 1995 and 2004, its rate was doubling, with the largest increase occurring among people aged 85 and more ²³.
155. Diehr et al. estimated the impact of five interventions on mortality on people aged 65 and more ¹¹⁸. Longevity could be increased by 3 months as the result of a one-shot intervention that would make healthy all sick people at baseline. An improvement of similar magnitude could be obtained from an intervention decreasing the probability of getting sick each year by 12%, or from an intervention increasing the probability of a sick person recovering by 16%, from an intervention decreasing the probability that a sick person dies by 15%, or from an intervention decreasing the probability that a healthy person dies by 14% ¹¹⁸.

Conclusion

156. Apart from demographic and epidemiological approaches, other experts use approaches that combine demographic approaches with analytical, epidemiological and biological approaches. However, these approaches have been more frequently used as theoretical bases, and there is less literature containing projections based on these theories.
157. The process of ageing itself can be a central aspect of the theory underlying the future evolution of longevity as a large part of the ageing might be related to biological phenomenon ¹¹⁹.
158. The search for a single cause of aging has recently been replaced by the view of aging as an extremely complex, multifactorial process ¹²⁰. The different theories of aging are now considered as complementary.

159. A straightforward and simple approach ⁶⁴ attributes age-related changes to genetic defects, perinatal and post-natal development, environment, disease, plus an inborn process, aging itself. Accumulation of deleterious changes produced by aging throughout the cells and tissues progressively impairs function and can eventually cause death. The mortality at a given age is a measure of the cumulated change at that age (the physiologic age), and the rate of mortality change is the rate of aging.
160. Risk of death is now largely determined by the inherent aging process after age 28. Only 1.1% of female cohorts in Sweden die before this age; the remainder die off at an exponentially increasing rate with advancing age.
161. According to this theory, risk of death in developed countries are now reaching limiting values : LE_0 is approaching plateau values that are 6-9 years less than the potential maximum of about 85 years ⁶⁴.
162. On the contrary, according to a theoretical model combining information related to both trends in cell growth and in survival ¹²¹, life span could increase beyond 120 years. In fact depending from what types of cells is considered, this maximum value varies between 98 and 126 years. Relevant mechanisms may be partly related to endocrine control ¹²².
163. Among other research on ageing, it has been shown that long-term caloric restriction may extend the life of the laboratory rat by about 25%. Although most humans would not adhere to such a diet as the one imposed on laboratory animals, research in humans has shown that a 20-25% reduced caloric intake is able to improve risk factors for cardiovascular diseases, and biomarkers for longevity (deep body temperature and plasma insulin) and thus, should increase life expectancy.
164. Using information from the survival studies of overweight and obese people, it is estimated that long-term reduced caloric intake to prevent excessive weight gain could add 3-13 years to life expectancy. However, the effects of caloric restriction on human life extension are probably much smaller than those achieved by medical and public health interventions : these have extended life by about 30 years in developed countries in the 20th century, by greatly reducing deaths from infections, accidents, and cardiovascular disease ¹²³.
165. Although several studies on animal models have shown that aging rates and life expectancy can be modified by "anti-aging" remedies, there is currently no evidence that these substances can slow aging or increase longevity ¹²⁴.
166. Based on projections of future economic and social development, and using historical relationships of economic and social development with cause-specific mortality rates, the WHO published projections of LE_0 to 2030 in several regions of the world ¹²⁵. According to this analysis, LE_0 is thought to increase in all regions of the World, provided future mortality in low income country will have a relationship to economic and social development similar to those that have occurred in higher-income countries. The increase in LE_0 in high income countries should reach 4-5 years in men and women, with a range of about 1.5 years between the pessimistic and the optimistic scenarios.
167. A complete scenario of future trends in longevity should also include projections of modal age at death, as well as insights about the future evolution of the survival curve in terms of rectangularization. Unfortunately, we are not aware of published work using these indicators.

Projection method	Swiss Federal Office of Statistics, 2006 ⁴⁷		Babel & al. 2007 ⁷⁹		Tuljapurkar S, 2000 ⁶	Li & Lee 2005 ⁶¹	U.N. Population Division, 2007 ¹²⁶	Bongaarts J, 2006 ²⁶	
	Period/cohort approaches (see § 118, p. 26)		Stochastic forecast		Convergence of mortality, (see § 115)	Lee-Carter (see § 107)	decomposition of mortality (see § 91)		
	M	W	M	W	M+W	M+W	M+W	M	W
Switzerland	85.0 (82.5-87.5)	89.5 (87.5-91.5)			-	86.5	82.9	84.5	90.2
Switzerland and Austria			82.1/89.1	87.3/94.0					
Japan	-	-	87.0/97.0	94.5/103.6	90.9	88.1	88.1	85.2	92.1
France	-	-	82.0/89.5	89.4/96.8	87.0	85.8	84.0	82.8	90.3
Germany	-	-	81.4/88.1	87.5/95.0	83.1	84.8	83.5	-	-
United States	-	-	80.4/87.3	84.9/91.4	82.9	84.9	81.6	81.6	87.0

Table 5. Values of projected LE₀ for 2050 in selected countries.

Projection method	Nusselder et al. 1996 ⁸⁵ (see § 129, p.27)	Uemura 1989 ⁸¹ (see § 125, p.27)	Vallin & Meslé (unpublished) ⁸² (see § 126, p. 27)	Olshansky 2005 ¹¹⁷ (see § 145, p. 29)	Mathers et al. 2006 ¹²⁵ (see § 162, p. 31)
	Elimination of selected disease	Lowest age-specific mortality rates worldwide	Lowest age- and cause-specific mortality rates worldwide	Impact of obesity	Cause-specific mortality rates
	Potential change in life expectancy at the time of analysis				2030
	M / W	M / W	M / W	M+W	M / W
Increase in LE ₀	From CVD: + 3.1/+ 2.7 yrs From cancer: + 2.7/+ 1.9 yrs	+2.5/+3.0 yrs	+5.4/+5.0 yrs	USA: - 3-4 months	High-income countries: 85.0/79.7

Table 6. Projected LE₀ according to selected approaches

Determinants of healthy life expectancy

168. Healthy life expectancy (HLE) depends on the burden of chronic diseases that may result in disability. Past trends in the evolution of HLE showed different evolutions between countries, within countries and between genders. Expectedly, there is currently a lack of consensus about future trends in HLE.
169. Projections of HLE rely on projected total life expectancy, combined with projections of the prevalence of disability. Trends of the latter have been favourable over the past twenty years. Based on information on younger cohorts, the prevalence of disability is projected to further fall until about 2015, then to stabilize and even rise slightly ¹²⁷.
170. Moreover, the rising rates of obesity and diabetes might well reverse disability trends ²³. The consequence of obesity on disability-free life expectancy is a loss of about 2.8 years of years of healthy life, even if LE_0 is not substantially reduced ¹²⁸. A trend analysis in obesity between 1985 and 2002 in middle-aged Americans, with an extrapolation to 2020, found that disability rates will increase by 1 percent more than if there were no further weight gain ¹²⁹.
171. Some recommend against extrapolating recent trends in disability forward into the future, because of the complex determinants of disability. In particular, the development of new assistive technologies might have contributed to the fall in reported disability ¹³⁰.
172. Using a similar approach as Nusselder for LE_0 (see §129 above on page 27), Ezzati computed health-adjusted life expectancy in the absence of 20 major risk factors for diseases and injuries. The burden of disease attributable to the joint effects of 20 selected leading risk factors were assessed and population attributable fractions for these risk factors were estimated using information about risk factor prevalence and about the associated risk of disease. The population attributable fraction represents the proportional reduction in disease or mortality that would occur if exposure to a risk factor were reduced to an alternative level. In Western Europe, removing these risk factors would increase health-adjusted life expectancy by about 5 years as compared to the current situation in 2000 ¹³¹.

Summing up and recommendations

173. In summary, all methods of projection predict that LE_0 will increase up to 2050 in men as in women in industrialized countries such as Switzerland, within a range of values of five to nine years ⁷⁹.
174. Most projections of life expectancy use historical trends in mortality rates or life expectancy as an input, viewed as the most reliable method of predicting the future trends ²². The main argument in favour of this approach is the remarkable stability of the changes over the past 200 years. It has been noted that the increase in life expectancy has occurred parallel to improvements in social context and medical care, but also included events with substantial demographic impact, such as the 1918 Spanish Flu, or wars. Further, it is claimed that any alternative methods of projection require a better understanding of underlying mechanisms ⁵.
175. On the other hand, previous projections based on past trends very often underestimated the increase in life expectancy, partly because of the belief that the main causes of longevity improvement in the 20th century were on-off gains that could not be repeated ¹³². Moreover, these extrapolative approaches neglect available information on past and future determinants of mortality and morbidity. In Switzerland for example, it seems that the 1950's have been a pivotal period with the start of the decline of the old age mortality.

176. It should be noted that projected values obtained through analytical and/or epidemiological hypotheses are not very different from those provided by extrapolative methods. But they are in a way more credible because based on some sort of logical information structure.
177. Despite available biological evidence, theories regarding an upper limit to life expectancy do not have much support.
178. Changing rates of specific chronic diseases (diabetes for example) and their determinants (obesity for example) will, at least in the short term, have a bigger impact on the years of life spent with disability rather than on life expectancy, although the observed increase in diabetes among younger adults might ultimately lead to higher death rates.
179. Recent trends in the proportion of healthy life expectancy are divergent across European countries. Whether these results indicate real variation or differences in measurement of disability is still undetermined. Robine and Michel claim that the compression and expansion of morbidity coexist, each of them being more prominent at a time ¹³³.
180. According to the general conclusions, two recommendations are proposed below, the first about making predictions, the second about the information system.

Making predictions

181. There is currently no definite argument in favour of one unique, specific method : we thus recommend to publish regularly (e.g., on a 5 years basis) projections based on several methods rather than on a single one.
182. In practical terms, this means that SFOS should continue to provide projections based on the usual demographic methods, plus to provide at least three other different projections, namely (i) a method using a set of observed lowest mortality rates at a given time (see §125 ff, p. 27), (ii) a method using the epidemiological projections of the main determinants (e.g., smoking, diet, etc.) of CVD mortality (see §139 ff, p.28), and (iii) a method estimating the effect of the projected evolution of education ⁵⁸ and socio-economic status on the future mortality rates.
183. Current demographic methods used by the SFOS should be complemented by several new development. One is to refine the use of historical trends and to use a historical period at least as long as the projection period ⁶⁸. A further development is to take into account the mortality experience of other populations, as suggested by Li and Lee (see §109, p 25). Further, the cohort effects should be considered, i.e., the mortality at young age should be analysed to determine whether recent trends in old-age mortality are likely to persist into the future.
184. As for the limit to life span, there is no available evidence of such a limit, and there are few signs that we are approaching this limit : in fact, ongoing studies in Switzerland suggest that we have a rectangularization of the survival curve, plus an increasing mean duration of life.
185. The three methods suggested earlier (see §181 above) need a closer collaboration between demographers and epidemiologists. The best way to achieve this collaboration is to set up a formal group working regularly on the theoretical and practical issues related to the use of the three methods.

186. Within the framework of the development of health-related indicators for the use of the three methods, more will be available to provide regularly estimates of healthy life expectancy. Its importance will grow as the burden of our ageing societies on the health and social services will be highly influenced by the number of years older persons spend in a disabled state. In other words, there is a need to monitor the health status of the oldest old, in order to estimate future age-specific needs for health and social services. Projections related to mortality and healthy life expectancy will be provided at the same time.

Develop appropriate information systems

187. A closer monitoring of longevity is needed. In practical terms, this means that mortality rates of the oldest-old (i.e., after 90) should be followed up not only with cross-sectional estimates, but also with cohort. The implementation of the Swiss National Cohort, a joint initiative of the Swiss Federal Office of Statistics and the Swiss Institutes for social and preventive medicine ⁵⁸ should help in this perspective.
188. In order to develop methods using health related information, epidemiology in the oldest population should be improved¹³⁴. There are at least two practical proposals. The first is to develop the health surveys addressed to elderly people. The Swiss health survey should systematically include a sample of institutionalized population, for this is a substantial part in this age range.
189. A second aspect is to rethink the system of cause of death. As it is, it is useless for the majority of deaths occurring after 80 years because the information content is low. Several initiatives, experiments and pilot studies are needed to prepare a change in the registration system. This could be a topic for a national, or even international, R&D programme.

Implement innovative research

190. Finally, a program of research aiming at disentangling the social and health care effects on mortality is needed. This is particularly important as the social expenses (e.g. housing) are in concurrence with the medical expenses.
191. As far as migration is concerned, Switzerland has traditionally a strong immigration policy, as reflected by the 20% of foreign persons, but the mortality pattern of this population is still unclear, as well as its impact on longevity in Switzerland.
192. Finally, in the context of a continuously increasing longevity engendering the emergence of a frail population, at risk for becoming disabled, the study of frailty also deserves much interest.

Annexes

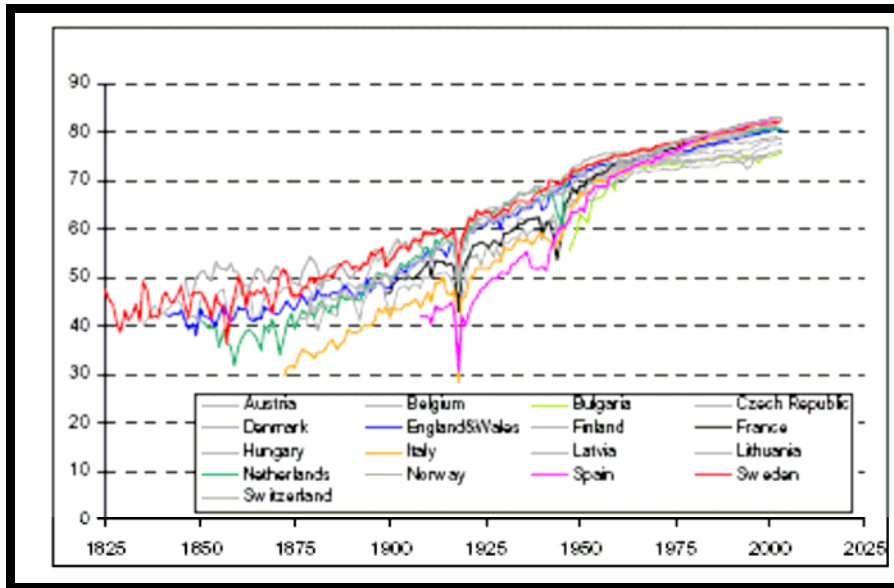


Figure 9. Evolution of LE₀ since 1825. Women, selected European countries (Source: European Health Expectancy Monitoring Unit, www.chemu.org).

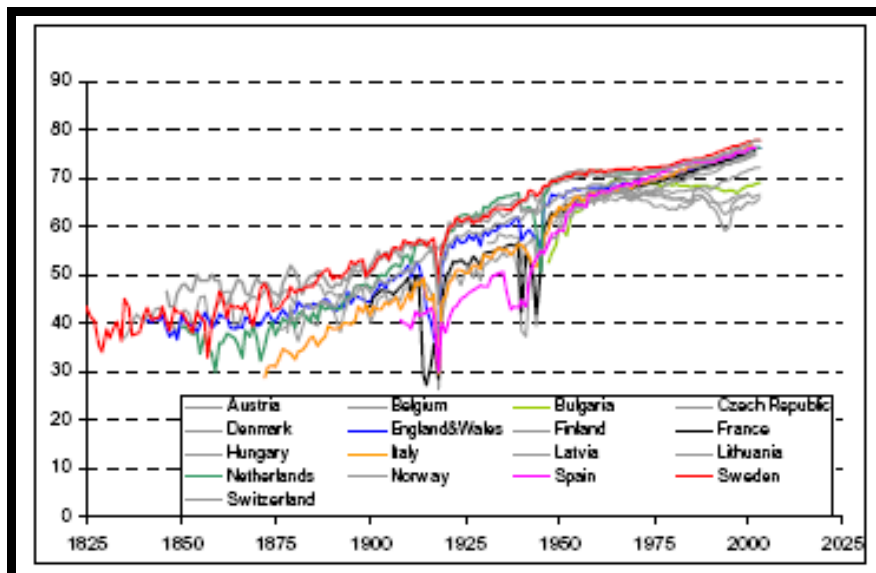


Figure 10. Evolution of LE₀ since 1825. Men, selected European countries (Source: European Health Expectancy Monitoring Unit, www.chemu.org)

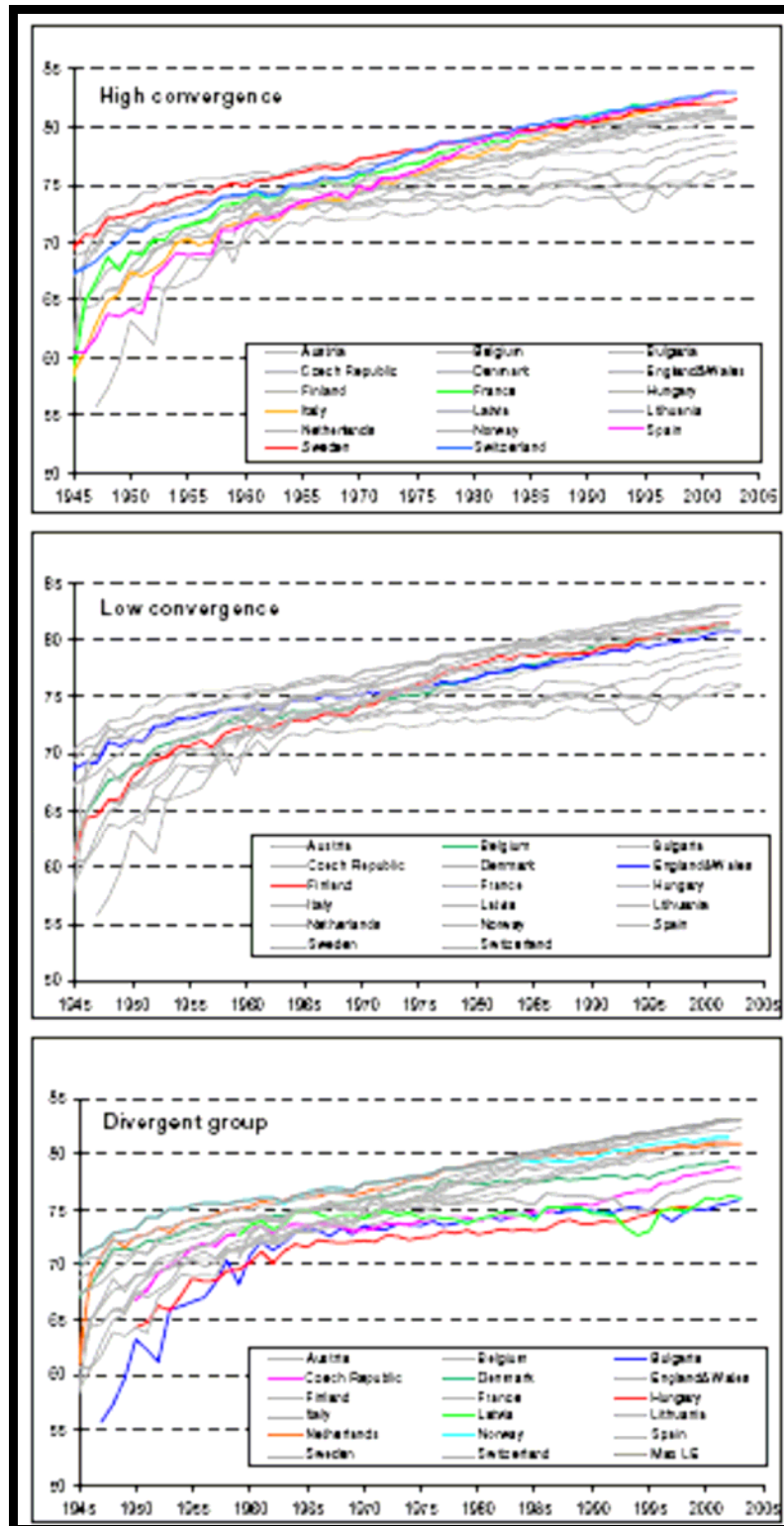


Figure 11. Three pattern of evolution of LE₀ since 1945 (i) "high convergence group", i.e., LE₀ at the highest level in Europe, (ii) "low convergence group", i.e., LE₀ at about 2 years lower than the highest level in Europe, (iii) "divergent group", LE₀ diverging from overall trend. Women, various European countries (Source: European Health Expectancy Monitoring Unit, www.ehemu.org)

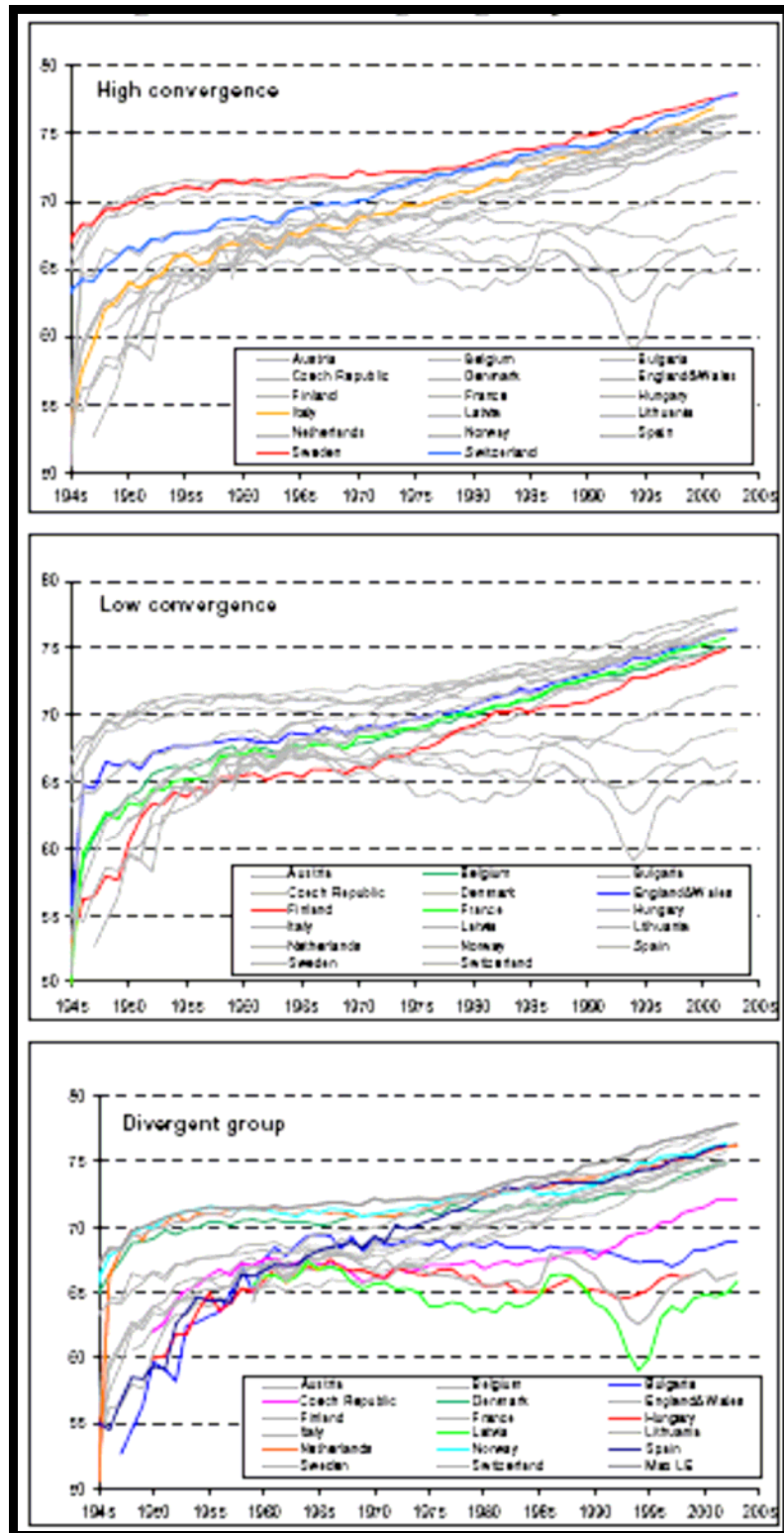


Figure 12. Three pattern of evolution of LE_0 since 1945 (i) "high convergence group", i.e., LE_0 at the highest level in Europe, (ii) "low convergence group", i.e., LE_0 at about 2 years lower than the highest level in Europe, (iii) "divergent group", LE_0 diverging from overall trend. Men, various European countries (Source: European Health Expectancy Monitoring Unit, www.ehemu.org)

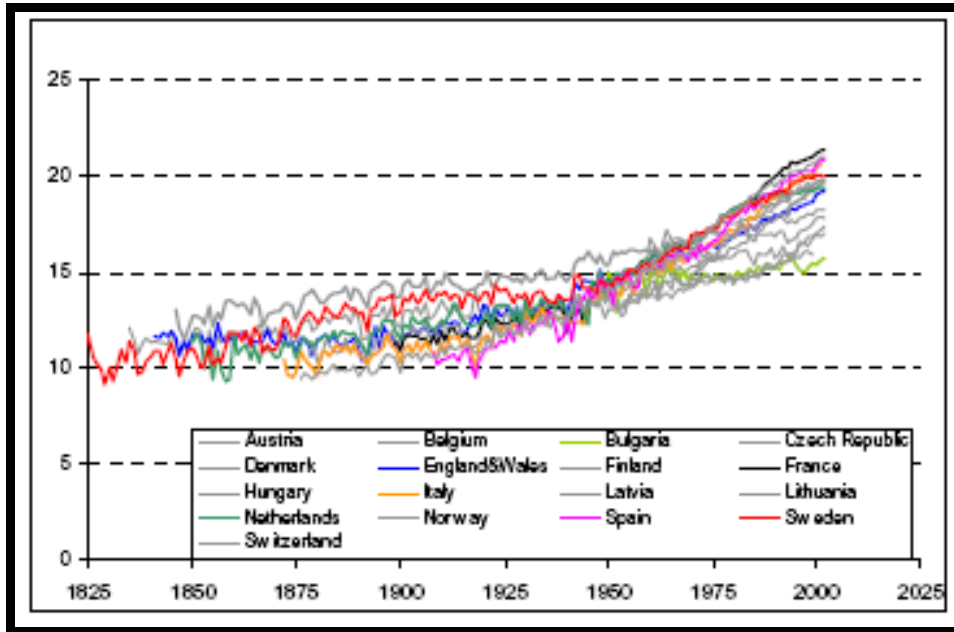


Figure 13. Evolution of LE₆₅ since 1825. Women, selected European countries
 (Source: European Health Expectancy Monitoring Unit, www.chemu.org)

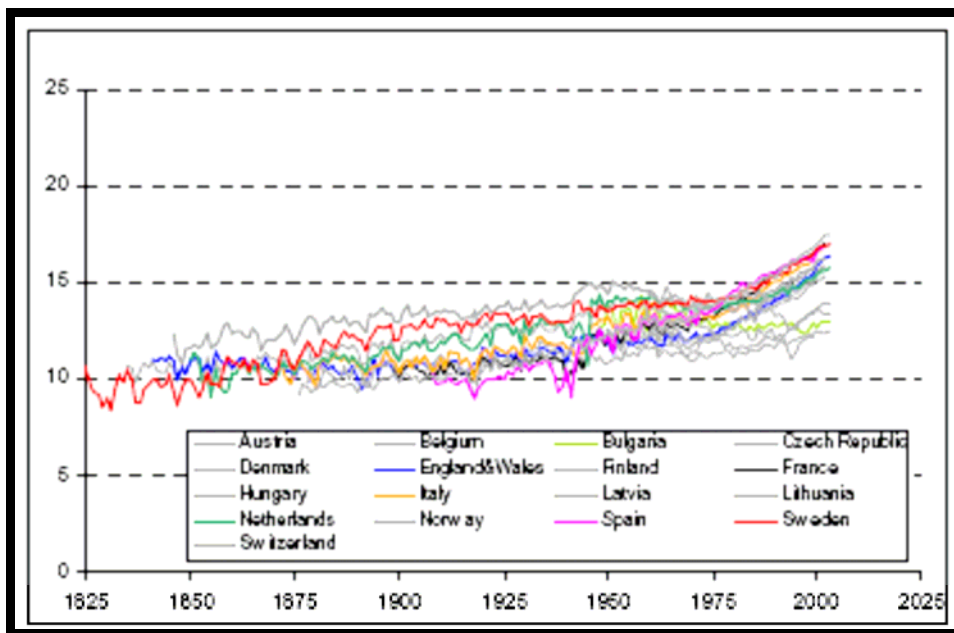


Figure 14. Evolution of LE₆₅ since 1825. Men, selected European countries
 (Source: European Health Expectancy Monitoring Unit, www.chemu.org)

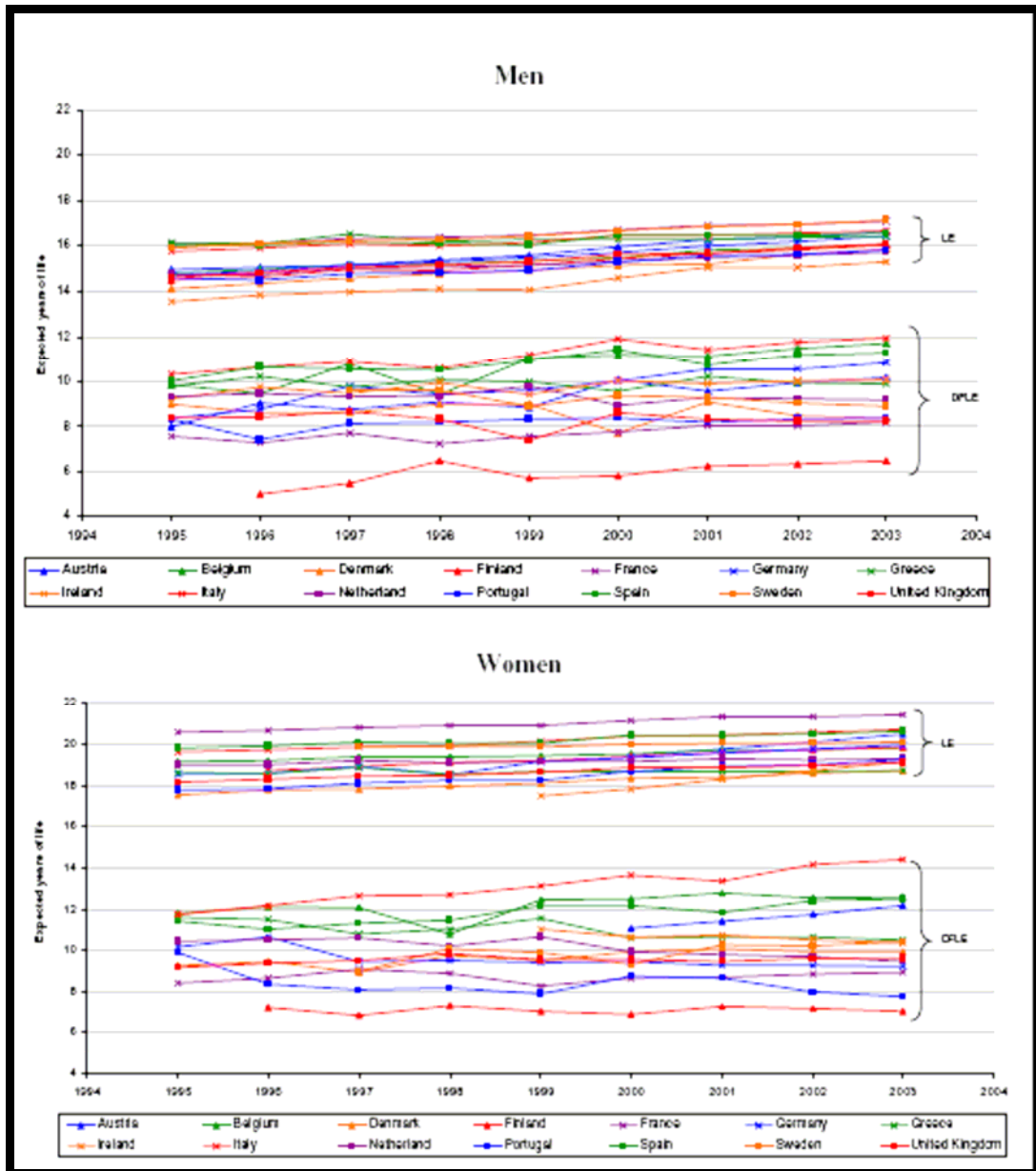


Figure 15. Trend in life expectancy and DFLE₆₅ in several European countries, 1995-2003, by gender. (Source: European Health Expectancy Monitoring Unit, www.chemu.org)

Literature

- (1) Lutz W, Sanderson W, Scherbov S. The coming acceleration of global population ageing. *Nature* 2008; 451(7179):716-719.
- (2) Robine J-M, Paccaud F. Nonagenarians and centenarians in Switzerland, 1860-2001: a demographic analysis. *J Epidemiol Community Health* 2005; 59(1):31-37.
- (3) Gluckman P, Hanson M. *The fetal matrix*. Cambridge University Press; 2004.
- (4) Vaupel JW, Gowan AE. Passage to Methuselah: some demographic consequences of continued progress against mortality. *Am J Public Health* 1986; 76(4):430-433.
- (5) Wilmoth JR. The future of human longevity: a demographer's perspective. *Science* 1998; 280:395-397.
- (6) Tuljapurkar S, Li N, Boe C. A universal pattern of mortality decline in the G7 countries. *Nature* 2000; 405(6788):789-792.
- (7) Oeppen J, Vaupel JW. Broken limits to life expectancy. *Science* 2002; 296(5570):1029-1031.
- (8) Fries JF. Measuring and monitoring success in compressing morbidity. *Ann Intern Med* 2003; 139(5 Pt 2):455-459.
- (9) Olshansky SJ, Passaro DJ, Hershow RC, Layden J, Carnes BA, Brody J et al. A potential decline in life expectancy in the United States in the 21st Century. *N Engl J Med* 2005; 352(11):1138-1145.
- (10) Wilmoth JR. Human longevity in historical perspective. In: Timiras PS, editor. *Physiological Basis of Aging and Geriatrics*. 3d ed. Boca Raton, FL: CRC Press; 2002. 11-24.
- (11) Wilmoth JR, Deegan LJ, Lundstrom H, Horiuchi S. Increase of maximum life-span in Sweden, 1861-1999. *Science* 2000; 289(5488):2366-2368.
- (12) Cheung SLK, Robine J-M, Tu E, Caselli G. Three dimensions of the survival curve: horizontalization, verticalization, and longevity extension. *Demography* 2005; 42(2):243-258.
- (13) Kannisto V. Mode and dispersion of the length of life. *Population* 2001; 13(1):159-171.
- (14) Lexis W. Sur la durée normale de la vie humaine et sur la théorie de la stabilité des rapports statistiques. *Annales de Démographie Internationale* 1878; 2(5):447-460.
- (15) Kannisto V. Mode and dispersion of the length of life. *Population* 2001; 13(1):159-171.
- (16) Livi-Bacci M. *La population dans l'histoire de l'Europe*. Paris: Seuil; 1999.
- (17) Vandenbroucke JP. Survival and expectation of life from the 1400's to the present. A study of the Knighthood Order of the Golden Fleece. *Am J Epidemiol* 1985; 122(6):1007-1016.
- (18) Mathers CD, Salomon JA, Murray CJ. Infant mortality is not an adequate summary measure of population health. *J Epidemiol Community Health* 2003; 57(5):319.
- (19) Mesle F. [Gender gap in life expectancy: the reasons for a reduction of female advantage]. *Rev Epidemiol Sante Publique* 2004; 52(4):333-352.
- (20) Bopp M, Spoerri A, Zwahlen M, Gutzwiller F, Paccaud F, Braun-Fahrlander C et al. Cohort Profile: The Swiss National Cohort--a longitudinal study of 6.8 million people. *Int J Epidemiol* 2008.
- (21) Paccaud F, Sidoti Pinto C, Marazzi A, Mili J. Age at death and rectangularisation of the survival curve: trends in Switzerland, 1969-1994. *J Epidemiol Community Health* 1998; 52(7):412-415.

- (22) Wilmoth JR. Demography of longevity: past, present, and future trends. *Experimental Gerontology* 2000; 35(9-10):1111-1129.
- (23) Kramarow E, Lubitz J, Lentzner H, Gorina Y. Trends In The Health Of Older Americans, 1970 2005. *Health Aff* 2007; 26(5):1417-1425.
- (24) Janssen F, Nusselder WJ, Looman CW, Mackenbach JP, Kunst AE. Stagnation in mortality decline among elders in the Netherlands. *Gerontologist* 2003; 43(5):722-734.
- (25) Nusselder WJ, Mackenbach JP. Lack of improvement of life expectancy at advanced ages in The Netherlands. *Int J Epidemiol* 2000; 29(1):140-148.
- (26) Bongaarts J. How long will we live? *Population and Development Review* 2006; 32(4):605-628.
- (27) McKee M, Zatonski W. How the cardiovascular burden of illness is changing in eastern Europe. *Evid Based Cardiovasc Med* 1998; 2(2):39-41.
- (28) Zatonski WA, Willett W. Changes in dietary fat and declining coronary heart disease in Poland: population based study. *BMJ* 2005 Jul 23;187-188.
- (29) Rehm J, Sulkowska U, Manczuk M, Boffetta P, Powles J, Popova S et al. Alcohol accounts for a high proportion of premature mortality in central and eastern Europe. *International Journal of Epidemiology* 2007;dyl294.
- (30) D'Amico M, Agozzino E, Biagino A, Simonetti A, Marinelli P. Ill-defined and multiple causes on death certificates--a study of misclassification in mortality statistics. *Eur J Epidemiol* 1999; 15(2):141-148.
- (31) Wilmoth JR, Lundstrom H. Extreme longevity in five countries: presentation of trends with special attention to issues of data quality. *Eur J Popul* 1996; 12(1):63-93.
- (32) Robine J-M, Saito Y, Jagger C. The emergence of extremely old people: the case of Japan. *Exp Gerontol* 2003; 38(7):735-739.
- (33) An unprecedented increase in the number of centenarians. IUSSP seminar on longevity and health, Rockefeller University, New York, 20-22 October, 2003; 2003.
- (34) Robine J-M, Saito Y. Survival beyond age 100: acceleration of the evolution in Japan. *Population and Development Review* 2003; 29(208):228.
- (35) Cheung SL, Robine JM. Increase in common longevity and the compression of mortality: the case of Japan. *Popul Stud (Camb)* 2007; 61(1):85-97.
- (36) Summary measures of population health: Concepts, ethics, measurement and applications. Geneva: World Health Organization; 2002.
- (37) Fries JF. Aging, natural death, and the compression of morbidity. *N Engl J Med* 1980; 303(3):130-135.
- (38) Fries JF. Frailty, heart disease, and stroke: The compression of morbidity paradigm. *American Journal of Preventive Medicine* 2005; 29(5, Supplement 1):164-168.
- (39) Mathers CD. Towards valid and comparable measurement of population health. *Bull World Health Organ* 2003; 81(11):787-788.
- (40) Sanders BS. Measuring Community Health Levels. *Am J Public Health Nations Health* 1964; 54(7):1063-1070.
- (41) Sullivan DF. A single index of mortality and morbidity. *HSMHA Health Rep* 1971; 86(4):347-354.
- (42) Mathers CD, Robine JM. How good is Sullivan's method for monitoring changes in population health expectancies? *Journal of Epidemiology and Community Health* 1997; 51(1):80-86.

- (43) Ustun TB, Chatterji S, Bickenbach J, Kostanjsek N, Schneider M. The International Classification of Functioning, Disability and Health: a new tool for understanding disability and health. *Disabil Rehabil* 2003; 25(11-12):565-571.
- (44) Katz S. Assessing self-maintenance: activities of daily living, mobility, and instrumental activities of daily living. *J Am Geriatr Soc* 1983; 31(12):721-727.
- (45) Mathers CD, Murray CJ, Salomon JA, Sadana R, Tandon A, Lopez AD et al. Healthy life expectancy: comparison of OECD countries in 2001. *Aust N Z J Public Health* 2003; 27(1):5-11.
- (46) Höpflinger F, Hugentobler V. Les besoins en soins des personnes âgées en Suisse. Berne: **Cahiers de l'Observatoire Suisse de la Santé**; 2003.
- (47) Office Fédéral de la Statistique. Statistique de la santé. www.bfs.admin.ch [2007
- (48) Lafortune G. Are disability rates among elderly people declining in OECD countries? A progress report on the current data collection and a preliminary assessment OECD costs of care for elderly populations. Paris: OECD; 2006.
- (49) Minicuci N, Noale M, Pluijm SMF, Zunzunegui MV, Blumstein T, Deeg DHJ et al. Disability-free life expectancy: a cross-national comparison of six longitudinal studies on ageing. The CLESA project. *Eur J Ageing* 2004; 1:37-44.
- (50) Perenboom RJ, Van Hertem LM, Boshuizen HC, van den Bos GA. Trends in disability-free life expectancy. *Disabil Rehabil* 2004; 26(7):377-386.
- (51) Wray LA, Blaum CS. Explaining the role of sex on disability: a population-based study. *Gerontologist* 2001; 41(4):499-510.
- (52) Schoeni RF, Liang J, Bennett J, Sugisawa H, Fukaya T, Kobayashi E. Trends in old-age functioning and disability in Japan, 1993-2002. *Popul Stud (Camb)* 2006; 60(1):39-53.
- (53) Crimmins EM, Saito Y, Ingegneri D. Changes in life expectancy and disability-free life expectancy in the United States. *Population and Development Review* 1989; 15:235-267.
- (54) Freedman VA, Martin LG, Schoeni RF. Recent trends in disability and functioning among older adults in the United States: a systematic review. *JAMA* 2002; 288(24):3137-3146.
- (55) Manton KG, Gu X, Lamb VL. Change in chronic disability from 1982 to 2004/2005 as measured by long-term changes in function and health in the U.S. elderly population. *Proc Natl Acad Sci U S A* 2006; 103(48):18374-18379.
- (56) Crimmins EM, Saito Y. Trends in healthy life expectancy in the United States, 1970-1990: gender, racial, and educational differences. *Soc Sci Med* 2001; 52(11):1629-1641.
- (57) Cai L, Lubitz J. Was there compression of disability for older Americans from 1992 to 2003? *Demography* 2007; 44(3):479-495.
- (58) Bopp M, Minder CE. Mortality by education in German speaking Switzerland, 1990-1997: results from the Swiss National Cohort. *Int J Epidemiol* 2003; 32(3):346-354.
- (59) Catalano R. Economic antecedents of mortality among the very old. *Epidemiology* 2002; 13(2):133-137.
- (60) Mathers CD, Murray CJ, Lopez AD, Sadana R, Salomon JA. Global patterns of healthy life expectancy for older women. *J Women Aging* 2002; 14(1-2):99-117.
- (61) Li N, Lee R. Coherent mortality forecasts for a group of populations: An extension of the Lee-Carter method. *Demography* 2005; 42(3):575-594.
- (62) Carnes BA, Olshansky SJ, Grahn D. Biological evidence for limits to the duration of life. *Biogerontology* 2003; 4(1):31-45.
- (63) Kannisto V, Lauritsen J, Thatcher R, Vaupel JW. Reductions in mortality at advanced ages: Several decades of evidence from 27 countries. *Population and Development Review* 1994; 20(4):793-810.

- (64) Harman D. Aging: Overview. *Ann NY Acad Sci* 2001; 928(1):1-21.
- (65) Olshansky SJ, Carnes BA, Cassel C. In search of Methuselah: estimating the upper limits to human longevity. *Science* 1990; 250(634):640.
- (66) Cutler DM, Huckman RS. Technological development and medical productivity: the diffusion of angioplasty in New York state. *Journal of Health Economics* 2003; 22(2):187-217.
- (67) Cutler DM, McClellan M. Is Technological Change In Medicine Worth It? *Health Aff* 2001; 20(5):11-29.
- (68) Janssen F, Kunst A. The choice among past trends as a basis for the prediction of future trends in old-age mortality. *Popul Stud (Camb)* 2007; 61(3):315-326.
- (69) Lee RD, Carter L. Modelling and forecasting the time series of US mortality. *J Am Stat Assoc* 1992; 87:659-671.
- (70) Lee RD. The Lee-Carter method of forecasting mortality, with various extensions and applications. *N Am Actuarial J* 2000; 4:80-93.
- (71) Wilson C. On the Scale of Global Demographic Convergence 1950-2000. *Population and Development Review* 2001; 27(1):155-172.
- (72) Carter L, Lee R. Modeling and forecasting U.S. sex differentials in mortality. *Int J Forecast* 1992; 8(3):393-411.
- (73) Booth H, Maindonald J, Smith L. Applying Lee-Carter under conditions of variable mortality decline. *Popul Stud (Camb)* 2002; 56(3):325-336.
- (74) World population to 2300. Department of Economic and Social Affairs, editor. 2004. New York, United Nations.
Ref Type: Report
- (75) Booth H. Demographic forecasting: 1980 to 2005 in review. *International Journal of Forecasting* 2006; 22:547-581.
- (76) Lee RB, Miller T. Evaluating the performance of the Lee-Carter method for forecasting mortality. *Demography* 2001; 38(4):537-549.
- (77) Bongaarts J. Long-range trends in adult mortality: models and projection methods. *Demography* 2005; 42(1):23-49.
- (78) Pedroza C. A Bayesian forecasting model: predicting U.S. male mortality. *Biostat* 2006; 7(4):530-550.
- (79) Babel B, Bomsdorf E, Schmidt R. Future life expectancy in Australia, Europe, Japan, and North America. *Journal of Population Research* 2007; 24(1):119-131.
- (80) Oeppen J, Vaupel JW. Broken limits to life expectancy. *Science* 2002; 296(5570):1029-1031.
- (81) Uemura K. Excess mortality ratio with reference to the lowest age-sex-specific death rates among countries. *World Health Stat Q* 1989; 42(1):26-41.
- (82) Vallin J, Mesle F. Les plus faibles mortalités. 2008.
Ref Type: Unpublished Work
- (83) Wilmoth JR. Are mortality projections always more pessimistic when disaggregated by cause of death? *Math Popul Stud* 1995; 5(4):293-319, 377.
- (84) Tsai SP, Lee ES, Hardy RJ. The effect of a reduction in leading causes of death: potential gains in life expectancy. *Am J Public Health* 1978; 68(10):966-971.
- (85) Nusselder WJ, van d, V, van Sonsbeek JL, Lenior ME, van den Bos GA. The elimination of selected chronic diseases in a population: the compression and expansion of morbidity. *Am J Public Health* 1996; 86(2):187-194.

- (86) Cheung SL, Robine JM, Paccaud F, Marazzi A. Dissecting the compression of mortality in Switzerland, 1876-2005. 2007.
Ref Type: Unpublished Work
- (87) Cheung SL, Robine JM, Caselli G. The use of cohort and period data to explore changes in adult longevity in low mortality countries. 2008.
Ref Type: Unpublished Work
- (88) Olshansky SJ. On forecasting mortality. *Milbank Q* 1988; 66(3):482-530.
- (89) Kesteloot H, Sans S, Kromhout D. Evolution of all-causes and cardiovascular mortality in the age-group 75-84 years in Europe during the period 1970-1996; a comparison with worldwide changes. *KESTELOOT2002. Eur Heart J* 2002; 23(5):384-398.
- (90) Tunstall-Pedoe H, Connaghan J, Woodward M, Tolonen H, Kuulasmaa K. Pattern of declining blood pressure across replicate population surveys of the WHO MONICA project, mid-1980s to mid-1990s, and the role of medication. *BMJ* 2006; 332(7542):629-635.
- (91) Galobardes B, Costanza MC, Bernstein MS, Delhumeau CH, Morabia A. Trends in risk factors for the major "lifestyle-related diseases" in Geneva, Switzerland, 1993-2000. *Ann Epidemiol* 2003; 13(7):537-540.
- (92) Koek HL, de Bruin A, Gast A, Gevers E, Kardaun JWPF, Reitsma JB et al. Decline in incidence of hospitalisation for acute myocardial infarction in the Netherlands from 1995 to 2000. *Heart* 2006; 92(2):162-165.
- (93) Tunstall-Pedoe H, Kuulasmaa K, Tolonen H, Davidson M, Mendis S, with 64 other contributors for The WHO MONICA Project. *MONICA Monograph and Multimedia Sourcebook*. Geneva: World Health Organization; 2003.
- (94) Kuulasmaa K, Tunstall-Pedoe H, Dobson A, Fortmann S, Sans S, Tolonen H et al. Estimation of contribution of changes in classic risk factors to trends in coronary-event rates across the WHO MONICA Project populations. *Lancet* 2000; 355(9205):675-687.
- (95) Tunstall-Pedoe H, Kuulasmaa K, Mahonen M, Tolonen H, Ruokokoski E, Amouyel P. Contribution of trends in survival and coronary-event rates to changes in coronary heart disease mortality: 10-year results from 37 WHO MONICA project populations. *Monitoring trends and determinants in cardiovascular disease. Lancet* 1999; 353(9164):1547-1557.
- (96) Wietlisbach V, Paccaud F, Rickenbach M, Gutzwiller F. Trends in cardiovascular risk factors (1984-1993) in a Swiss region: results of three population surveys. *Prev Med* 1997; 26(4):523-533.
- (97) Eichholzer M, Camenzind-Frey E, Matzke A, et al. *Cinquième rapport sur la nutrition en Suisse*. Bern: Bundesamt für Gesundheit; 2005.
- (98) Hooper L, Griffiths E, Abrahams B, Alexander W, Atkins S, Atkinson G et al. Dietetic guidelines: diet in secondary prevention of cardiovascular disease (first update, June 2003). *Journal of Human Nutrition and Dietetics* 2004; 17(4):337-349.
- (99) Appel LJ. Nonpharmacologic therapies that reduce blood pressure: a fresh perspective. *Clin Cardiol* 1999; 22(7 Suppl):III1-III5.
- (100) Appel LJ. Salt reduction in the United States. *BMJ* 2006; 333(7568):561-562.
- (101) Vollenweider P, Hayoz D, Preisig M, Pécoud A, Warteworth D, Mooser V et al. L'état de santé des Lausannois : premiers résultats de l'étude CoLaus. *Revue Médicale Suisse* 2006;(86).
- (102) O'Flaherty M, Ford E, Allender S, Scarborough P, Capewell S. Coronary heart disease trends in England and Wales from 1984 to 2004: concealed levelling of mortality rates among young adults. *Heart* 2008; 94(2):178-181.
- (103) Liu PY, Death AK, Handelsman DJ. Androgens and Cardiovascular Disease. *Endocr Rev* 2003; 24(3):313-340.

- (104) Klenk J, Rapp K, Buchele G, Keil U, Weiland SK. Increasing life expectancy in Germany: quantitative contributions from changes in age- and disease-specific mortality. *Eur J Public Health* 2007; 17(6):587-592.
- (105) Preston SH, Wang H. Sex mortality differences in the United States: the role of cohort smoking patterns. *Demography* 2006; 43(4):631-646.
- (106) Goldman DP, Shang B, Cutler DM, Joyce GF. The value of elderly disease prevention. Berkeley Electronic Press; 2006.
- (107) Nyholm M, Merlo J, Rastam L, Lindblad U. Overweight and all-cause mortality in a Swedish rural population: Skaraborg Hypertension and Diabetes Project. *Scand J Public Health* 2005; 33(6):478-486.
- (108) Cutler DM, Glaeser EL, Rosen AB. Is the US population behaving healthier? National Bureau of Economic Research, Cambridge, Massachusetts, editors. Working Paper 13013. 2007. Ref Type: Report
- (109) Danon-Hersch N, et al., Chiolero A, Shamlaye C, Paccaud F, Bovet P. Decreasing association between body mass index and blood pressure over time. *Epidemiology* 2007; 18(4):493-500.
- (110) Mitrou PN, Kipnis V, Thiebaut ACM, Reedy J, Subar AF, Wirfalt E et al. Mediterranean Dietary Pattern and Prediction of All-Cause Mortality in a US Population: Results From the NIH-AARP Diet and Health Study. *Arch Intern Med* 2007; 167(22):2461-2468.
- (111) Waijers PM, Ocke MC, van Rossum CT, Peeters PH, Bamia C, Chloptsios Y et al. Dietary patterns and survival in older Dutch women. *Am J Clin Nutr* 2006; 83(5):1170-1176.
- (112) Christensen K, Johnson TE, Vaupel JW. The quest for genetic determinants of human longevity: challenges and insights. *Nat Rev Genet* 2006; 7(6):436-448.
- (113) vB Hjelmberg J, Iachine I, Skytthe A, Vaupel JW, McGue M, Koskenvuo M et al. Genetic influence on human lifespan and longevity. *Hum Genet* 2006; 119(3):312-321.
- (114) Drenos F, Westendorp R, Kirkwood T. Trade-off Mediated Effects on the Genetics of Human Survival Caused by Increasingly Benign Living Conditions. *Biogerontology* 2006; 7(4):287-295.
- (115) Stock GB, Callahan D. Would Doubling the Human Lifespan Be a Net Positive or Negative for Us, Either as Individuals or as a Society? Point-Counterpoint. *Ann NY Acad Sci* 2005; 1055(1):207-218.
- (116) Goldman DP, Shang B, Bhattacharya J, Garber AM, Hurd M, Joyce GF et al. Consequences of health trends and medical innovation for the future elderly. *Health Affairs (Millwood)* 2005; 24(Suppl 2):W5R5-W5R17.
- (117) Olshansky SJ, Passaro DJ, Hershow RC, Layden J, Carnes BA, Brody J et al. A potential decline in life expectancy in the United States in the 21st Century. *The New England Journal of Medicine* 2005; 352(11):1138-1145.
- (118) Diehr P, Derleth A, Cai L, Newman AB. The effect of different public health interventions on longevity, morbidity, and years of healthy life. *BMC Public Health* 2007; 7:52.
- (119) Greider CW. Telomeres and senescence: The history, the experiment, the future. *Current Biology* 1998; 8(5):R178-R181.
- (120) Kirkwood TBL. A systematic look at an old problem. *Nature* 2008; 451(7179):644-647.
- (121) Ruiz-Torres A, Beier W. On maximum human life span: interdisciplinary approach about its limits. *Adv Gerontol* 2005; 16(14):20.
- (122) Ruiz-Torres A, Soares de Melo Kirzner M. Ageing and Longevity Are Related to Growth Hormone/Insulin-Like Growth Factor-1 Secretion. *Gerontology* 2002; 48(6):401-407.
- (123) Everitt AV, Le Couteur DG. Life extension by calorie restriction in humans. *Ann N Y Acad Sci* 2007; 1114:428-433.

- (124) Tosato M, Zamboni V, Ferrini A, Cesari M. The aging process and potential interventions to extend life expectancy. *Clin Interv Aging* 2007; 2(3):401-412.
- (125) Mathers CD, Loncar D. Projections of global mortality and burden of disease from 2002 to 2030. *PLoS Med* 2006; 3(11):e442.
- (126) Long-range population projections. United Nations, Population Division, editors. 21-8-2003. New York.
Ref Type: Report
- (127) Bhattacharya J, Cutler D.M., Goldman DP, Hurd MD, Joyce GF, Lakdawalla D et al. Disability forecasts and future Medicare costs. In: Garber AM, editor. *Frontiers in Health Policy Research*. 7 ed. MIT Press; 2004. 75-94.
- (128) Lakdawalla DN, Goldman DP, Shang B. The health and cost consequences of obesity among the future elderly. *Health Aff* 2005;hlthaff.
- (129) Sturm R, Ringel JS, Andreyeva T. Increasing obesity rates and disability trends. *Health Aff (Millwood)* 2004; 23(2):199-205.
- (130) Wolf DA, Hunt K, Knickman J. Perspectives on the recent decline in disability at older ages. *Milbank Q* 2005; 83(3):365-395.
- (131) Ezzati M, Hoorn SV, Rodgers A, Lopez AD, Mathers CD, Murray CJ. Estimates of global and regional potential health gains from reducing multiple major risk factors. *Lancet* 2003; 362(9380):271-280.
- (132) Shaw C. Fifty years of United Kingdom national population projections: how accurate have they been? *Popul Trends* 2007;(128):8-23.
- (133) Robine J-M, Michel J-P. Looking forward to a general theory on population aging. *J Gerontol A Biol Sci Med Sci* 2004; 59(6):M590-M597.
- (134) Mathers CD, Murray CJ, Ezzati M, Gakidou E, Salomon JA, Stein C. Population health metrics: crucial inputs to the development of evidence for health policy. *Popul Health Metr* 2003; 1(1):6.