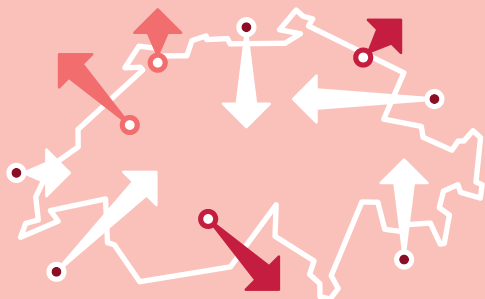


Figures from 2020 unless another year is specified



Gross domestic product (GDP)

CHF 706 242 m

At current prices, provisional

CHF 81 758 per inhabitant

-2.4%

Change over previous year,
at prices of preceding year, provisional

CHF 680 929 m

Gross national income (GNI)

at current prices, provisional

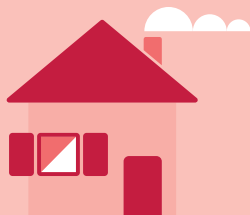
CHF 344 285 m

Consumption expenditure

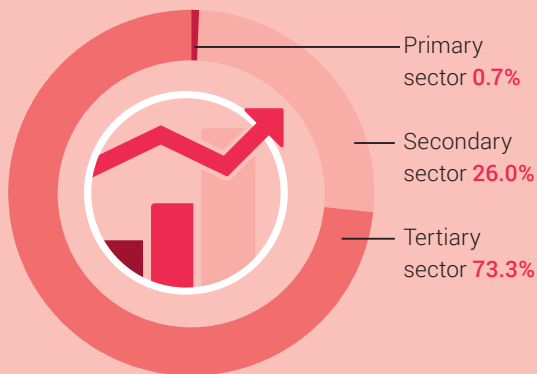
at current prices,

provisional

CHF 39 856 per inhabitant



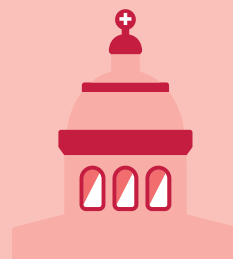
Structure of the Swiss economy
as a % of the GDP, by economic sectors



27.6%

Savings rate of private households

as a % of the gross disposable income incl. the 2nd pillar



-2.8

Surplus (+)/deficit (-)
of general government
in relation to the GDP