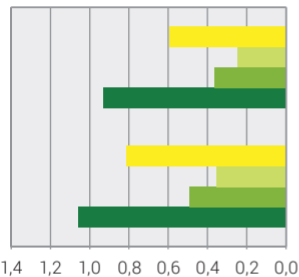
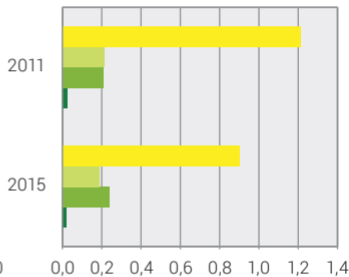


Active members by administrative form and benefit coverage scheme

Collective and communal installations
in million members



Other pension funds
in million members



Risk benefit coverage scheme:

- independent (without reinsurance)
- independent (with excess of loss or stop loss insurance)
- semi-independent (coverage of at least one of the risks "death" or "disability" by an insurance company)
- collective (full risk by an insurance company)