

Utilizaziun dal terren, 2018

- ① gaud e bostgaglia **32%**
- ② surfatschas agriculas **23%**
- ③ ulteriurs territoris nativals **21%**
- ④ surfatschas d'economia d'alp **12%**
- ⑤ surfatschas d'abitadi **8%**
- ⑥ auas **4%**



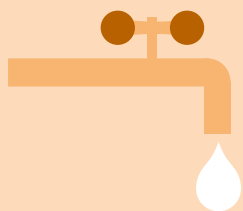
17 t

impronta da material
per persuna, 2019



35%

spezias d'animals e da plantas
sparidas resp. periclitadas



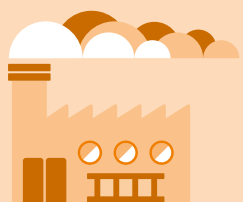
297 l

consum quotidian
d'aua da baiver per persuna



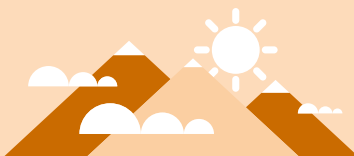
5%

entradas fiscalas
che derivan da taglias ecologicas



12,6 t

impronta da gas cun effect
da serra, equivalent da CO₂
per persuna, 2019



84%

da la populaziun valitescha
la qualitat da l'ambient en Svizra
sco fitg buna u plitgusch buna
l'onn 2019.



704 kg

rument chasan per persuna



164 000

persunas occupadas
en il sector da l'ambient