

Figures from 2020 unless another year is specified



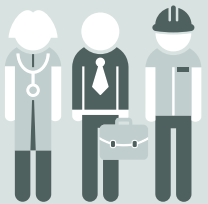
## 45%

of jobs in the 5 largest agglomerations (Basel, Bern, Geneva, Lausanne, Zurich), 2019



## 4%

Social assistance rate in the urban area, twice as high as in the other regions



## 51%

of active population with a tertiary-level degree in an urban, 40% in a rural area

### Unemployment rate in the agglomerations



Geneva 4.7%

Lausanne 4.7%

Other agglomerations or cores 3.2%

**Switzerland** 3.1%

Zurich 3.1%

Basel 3.0%

No agglomerations or cores 2.4%

Bern 2.4%

### Average distance to nearest service, 2018

Transport stops (2020)



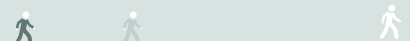
Compulsory schools



Grocery shops



Doctors' practices



0 0.5 1.0 1.5 2.0 2.5 km



Urban



Intermediate



Rural