

Employed persons



4.684 m



76.9%

work in the service sector

37.1%

work part-time (<90%)

7.7%

have more than one professional activity

13.3%

are self-employed

9.1%

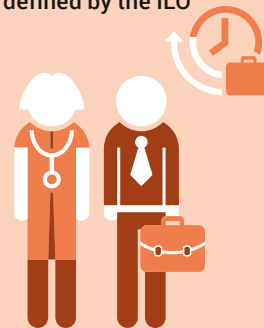
changed employers between 2020 and 2021

ILO Unemployed



252 000

Long-term unemployed (1 year or more) as defined by the ILO



104 000



36.2

number of persons aged 65 and over per 100 economically active persons aged 20 to 64