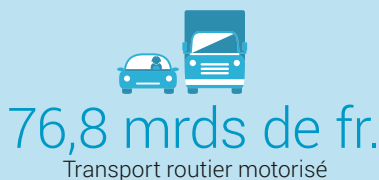
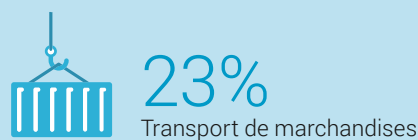
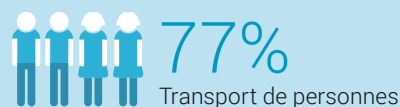
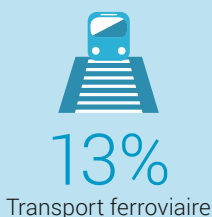
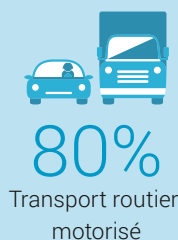


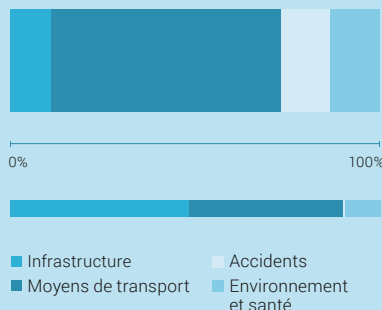


## 96,3 mrds de francs

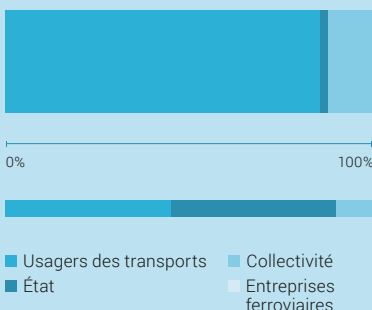
Coûts totaux du transport motorisé (+12% depuis 2010)



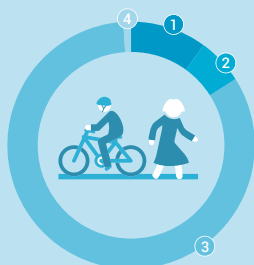
### D'où les coûts proviennent...



### ... et qui les prend en charge.



### Coûts de la mobilité douce, en 2015



- 1** Infrastructure **10%** (1,1 mrd de fr.)
- 2** Moyens de transport **6%** (0,6 mrd de fr.)
- 3** Accidents **83%** (8,7 mrd de fr.)
- 4** Environnement et santé **1%** (0,1 mrd de fr.)

### Financement des infrastructures routières

