

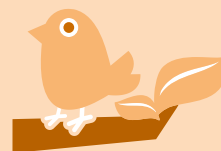
Utilizaziun dal terren, 2018

1. gaud e bostaglia **32%**
2. surfatschas agriculas **23%**
3. ulteriurs territoris nativals **21%**
4. surfatschas d'economia d'alp **12%**
5. surfatschas d'abitadi **8%**
6. auas **4%**



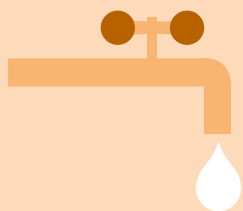
16 t

impronta da material
per persuna



35%

spezias d'animals e da plantas
sparidas resp. periclitadas



297 l

consum quotidian
d'aua da baiver per persuna



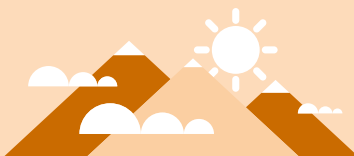
5%

entradas fiscalas
che derivan da taglias ecologicas



11,9 t

impronta da gas cun effect
da serra, equivalent da CO₂
per persuna



84%

da la populaziun valitescha
la qualitat da l'ambient en Svizra
sco fitg buna u plitgusch buna
l'onn 2019.



704 kg

rument chasan per persuna



164 000

persunas occupadas
en il sector da l'ambient