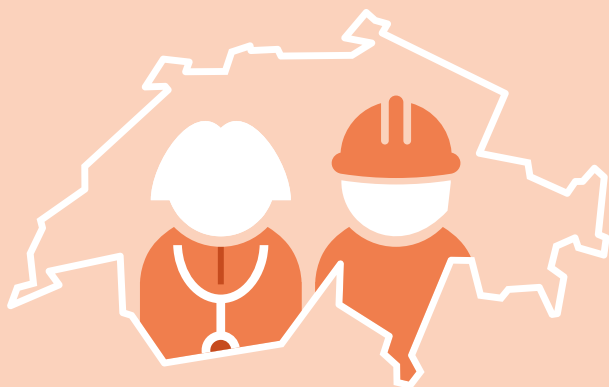


## Employed persons



4.713 m



77.2%

work in the service sector

37.0%

work part-time (<90%)

7.7%

have more than one professional activity

13.8%

are self-employed

8.9%

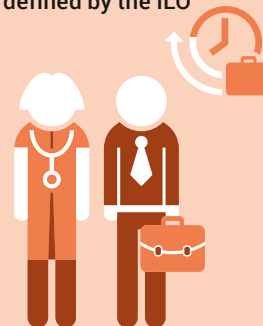
changed employers between 2021 and 2022

## ILO Unemployed



212 000

Long-term unemployed (1 year or more) as defined by the ILO



86 000



37.0

number of persons aged 65 and over per 100 economically active persons aged 20 to 64