

Gross domestic product (GDP)

CHF 731 662 m

At current prices, provisional

CHF 84 055 per inhabitant

4.2%

Change over previous year,
at prices of preceding year, provisional

CHF 715 194 m

Gross national income (GNI)

at current prices, provisional

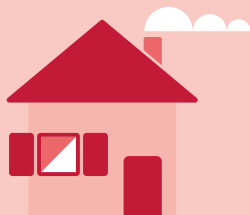
CHF 349 530 m

Consumption expenditure

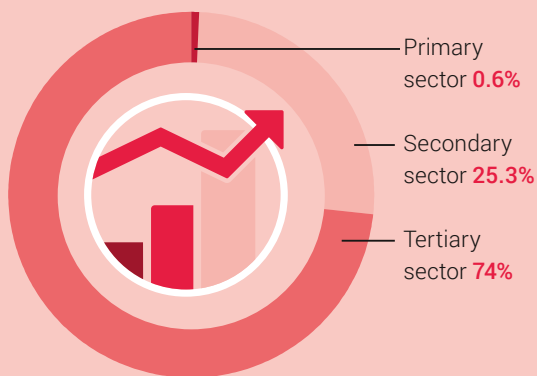
at current prices,

provisional

CHF 40 155 per inhabitant



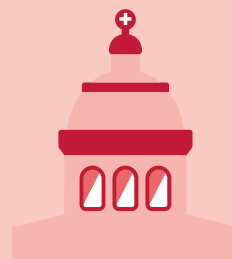
Structure of the Swiss economy
as a % of the GDP, by economic sectors



26.5%

Savings rate of private households

as a % of the gross disposable income incl. the 2nd pillar



-0.5

Surplus (+)/deficit (-)
of general government
in relation to the GDP