

Figures from 2021 unless another year is specified



## People in education 2021/22, in thousands

- ① Compulsory education **987.7**
- ② Upper secondary level **366.4**
- ③ Professional education **62.5**
- ④ Higher education institutions **276.6**

## Teaching staff 2020/21 and higher education staff, in thousands



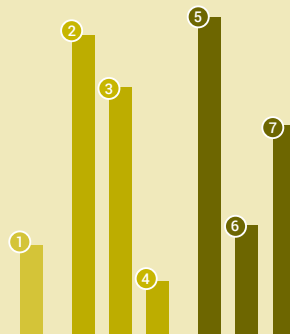
Compulsory education **102.6**

Higher education institutions **101.1**

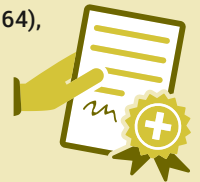
Upper secondary level **35.1**

Colleges of higher education **7.6**

## Educational attainment level of the population (aged 25–64), in percent



- ① **Compulsory education 12.6**
- ② **Upper secondary level 42.4**
- ③ **Vocational education and training 34.9**
- ④ **General education 7.5**
- ⑤ **Tertiary level 45.0**
- ⑥ **Professional education 15.4**
- ⑦ **Higher education institutions 29.6**



## CHF 40.8 bn

Public education expenditure, 2020

## 5.9%

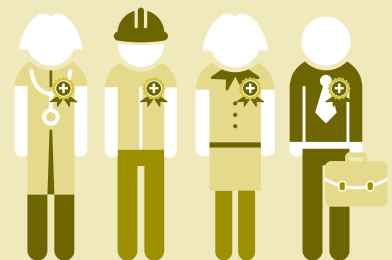
of the gross domestic product



## CHF 23 bn

Expenditure on research and development 2019, in Switzerland/Of which business enterprises **68%**

R&D personnel in the business enterprises **51 623** (full-time equivalents)



## 90.2%

of young adults up to the age of 25 will have obtained an upper secondary qualification by 2020