

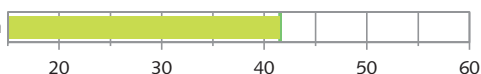
# Average age of the economically active population, 2016

Annual average, permanent resident population aged 15 and older

Economically active population

**Total**

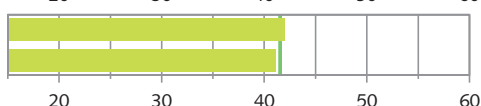
Economically active population



**Sex**

Men

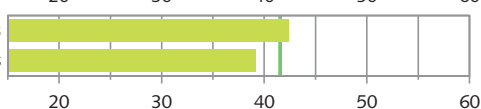
Women



**Nationality**

Swiss nationals

Foreign nationals



**Major groups of occupations**

Management

Academic professions

Technicians and associated professionals

Clerical and related workers

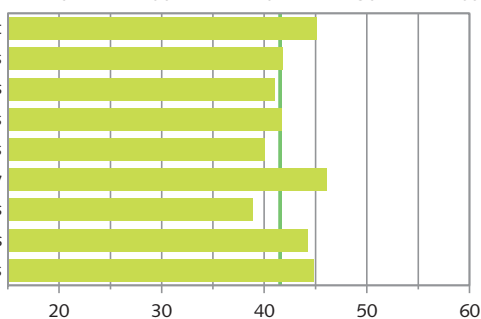
Service and sales workers

Management in Agriculture and Forestry

Craft and related trades workers

Plant and machine operators, assemblers

Elementary occupations



**Economic sector**

A Agriculture and Forestry

B-E Manufacturing/energy provision

F Construction

G Trade and repair sector

H Transportation and storage

I Restaurant and hotel sector

J Information and communication

K Banking and insurance

L/N Property, other economic services

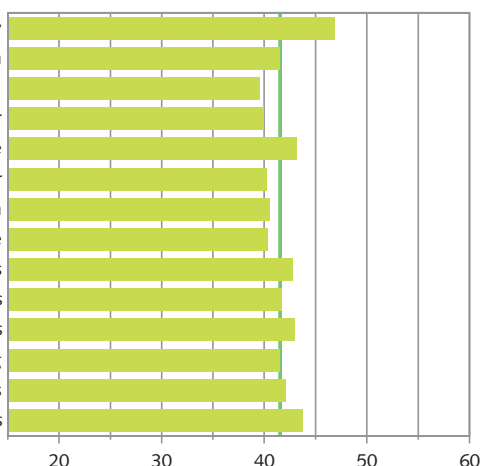
M Professional, scientific and technical services

O/U Public administration, extraterritorial org. and bodies

P Education and teaching

Q Health and social services

R/S/T Art, maintenance., Private HH, other services



**Employed persons**

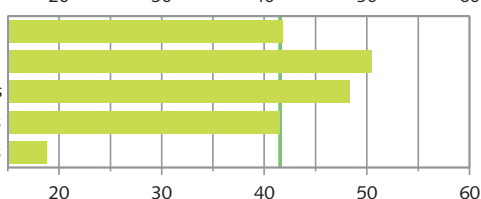
All

Self-employed

Family members working in family business

Employees

Apprentices



**Unemployed based on ILO definition**

