



256 800

Number of social assistance recipients

2.9%

Social assistance rate

29.6%

Share of 0–17 year old social assistance recipients



27.0%

Expenditure on the system of social security benefits, as % of the GDP

CHF 207.8 bn

Expenditure on social benefits



- ① Sickiness/health care **33.0%**
- ② Disability **8.0%**
- ③ Old age **42.0%**
- ④ Survivors **4.6%**
- ⑤ Family/children **5.8%**
- ⑥ Unemployment **3.2%**
- ⑦ Housing **1.3%**
- ⑧ Social exclusion **2.2%**



CHF 2.8 bn

Net expenditure on financial social assistance

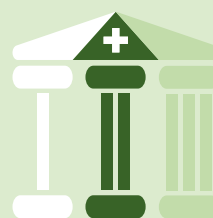


CHF 48.4 bn

OASI, revenue

CHF 47.0 bn

OASI, expenditure



CHF 43.4 bn

2nd pillar, benefits
(pensions + lump-sum)

1.3 m

Recipients of benefits