

# Poverty and deprivation

20 Economic and social situation of the population

2022

8.2% = 702 000

Persons affected by income poverty



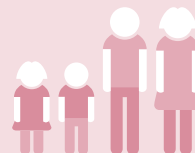
2284 CHF

4010 CHF

Poverty line (per month)

15.6% = 1 344 000

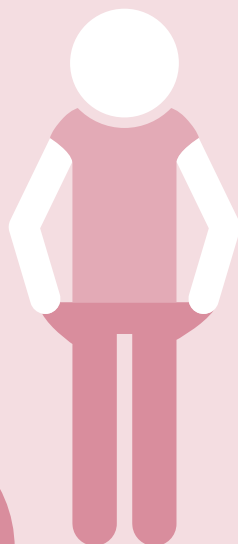
Persons at risk of poverty



2587 CHF

5432 CHF

At-risk-of-poverty line (per month)



Poverty rate before social transfers

17.2%

-52%

Poverty rate after social transfers

8.2%

Decrease in the poverty rate through social transfers  
(e.g. invalidity pensions, family allowances,  
social assistance; without old-age benefits)

15.3% (vs. 5.8% of the total population)  
of people at risk of poverty  
live in an overcrowded household

7.5% (vs. 3.2% of the total population)  
of people at risk of poverty have  
unmet needs for medical examination

20.5% (vs. 8.4% of the total population)  
of people at risk of poverty  
are dissatisfied with their current life



9.9%

have difficulty or great difficulty  
in making ends meet

7.2%

have at least one arrear (not including taxes  
and health insurance premiums)

18.5%

are unable to face  
an unexpected financial expense

9.0%

cannot afford a one week annual holiday  
away from home

3.4%

cannot get together with friends or family  
for a drink or meal at least once a month

19.0%



9.2%

31.5%

28.6%

7.1%



The income data in the SILC 2022 survey relates to the year 2021. All other results represent the situation in the first half of 2022.

Source: FSO, Eurostat – SILC 2022