

- ① One-person households **37%**
- ② Couples without children **27%**
- ③ Couples with children aged under 25 **24%**
- ④ Lone parents with children aged under 25 **5%**
- ⑤ Other households **7%**



18%

of 25 to 80-year-olds provide assistance to people with health impairments at least once a week.

Households with children aged under 25 who have difficulty making ends meet financially



20%



10%

Part-time employed persons

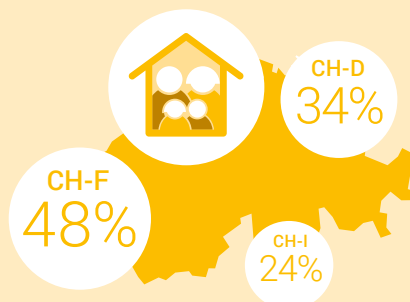


76%



14%

25 to 54 year-olds with children aged under 25



Share of households with children aged under 13 who use a day care centre or extra-school care.



51%

of the population think that a child can also be happy and develop if they grow up with a same-sex couple.

Domestic violence: persons harmed



70%



30%

How many children do women have at the end of their childbearing years (age 50–59)?



23%
none



15%
one



39%
two



23%
three or more