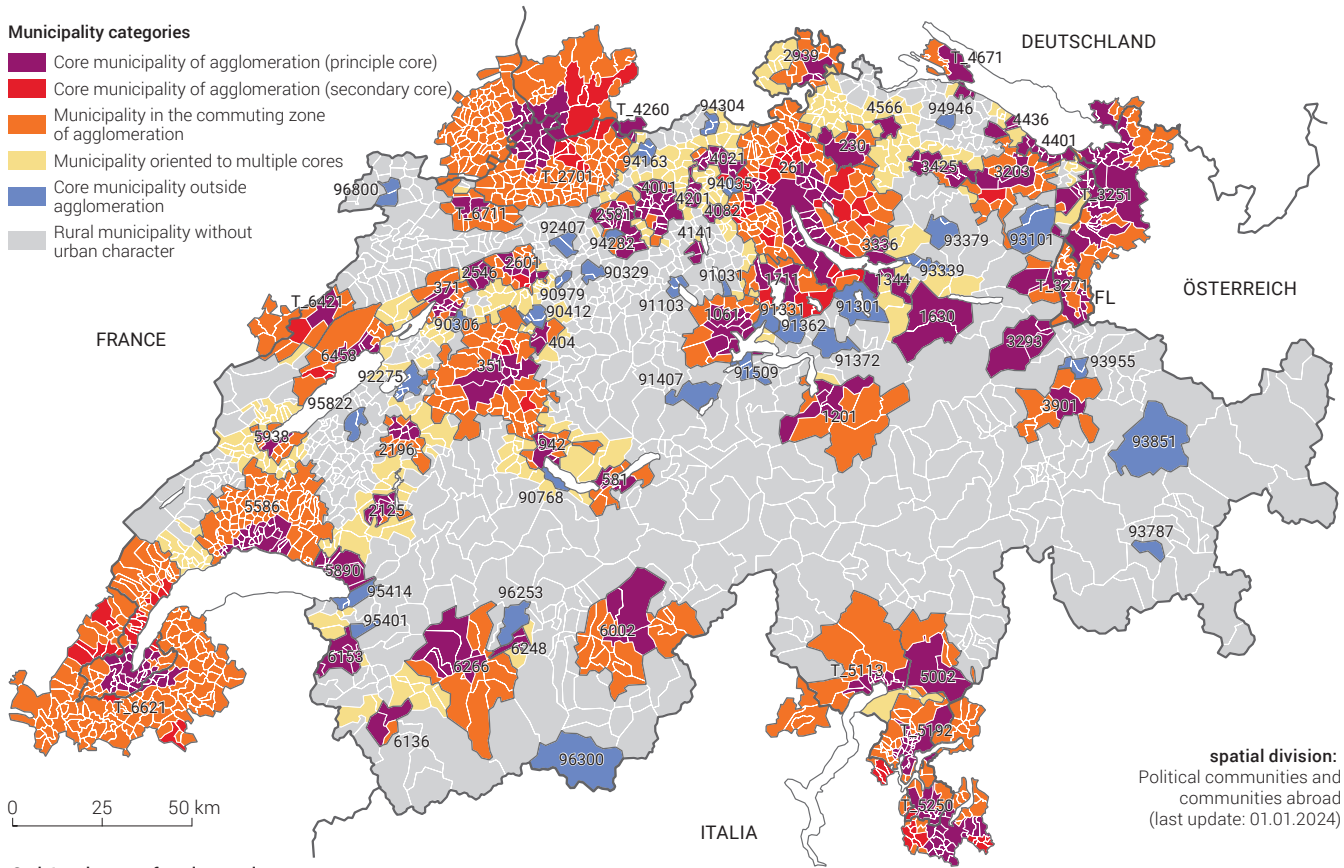


Municipality categories

- Core municipality of agglomeration (principle core)
- Core municipality of agglomeration (secondary core)
- Municipality in the commuting zone of agglomeration
- Municipality oriented to multiple cores
- Core municipality outside agglomeration
- Rural municipality without urban character



Code¹ and name of agglomeration

230	Winterthur	2581	Olten – Zofingen	4201	Lenzburg	5938	Yverdon-les-Bains
261	Zürich	2601	Solothurn	T_4260	Bad Säckingen – Stein (AG) (DE/CH)	6002	Brig – Visp
351	Bern	T_2701	Basel (CH/DE/FR)			6136	Martigny
371	Biel/Bienne	2939	Schaffhausen	4401	Arbon – Rorschach	6153	Monthey
404	Burgdorf	3203	St. Gallen	4436	Amriswil – Romanshorn	6248	Sierre
581	Interlaken	T_3251	Rheintal (AT/CH/DE)	4566	Frauenfeld	6266	Sion
942	Thun	T_3271	Vaduz – Buchs (LI/CH)	T_4671	Konstanz – Kreuzlingen (DE/CH)	T_6421	La Chaux-de-Fonds – Le Locle (CH/FR)
1061	Luzern	3293	Mels – Sargans			6458	Neuchâtel
1201	Altdorf (UR)	3336	Rapperswil-Jona – Rüti	5002	Bellinzona	T_6621	Genève (CH/FR)
1344	Lachen	3425	Wil (SG)	T_5113	Locarno (CH/IT)	T_6711	Delémont (CH/FR)
1630	Glarus	3901	Chur	T_5192	Lugano (CH/IT)		
1711	Zug	4001	Aarau	T_5250	Como – Chiasso – Mendrisio (IT/CH)		
2125	Bulle	4021	Baden – Brugg				
2196	Fribourg	4082	Wohlen (AG)	5586	Lausanne		
2546	Grenchen	4141	Reinach (AG)	5890	Vevey – Montreux		

¹ T_xxxx indicates cross-border agglomerations

Code and name of core outside of agglomeration

90306	Lyss	91331	Küssnacht (SZ)	93339	Uznach	94304	Döttingen – Böttstein
90329	Langenthal	91362	Arth	93379	Wattwil	94946	Weinfelden
90412	Kirchberg (BE)	91372	Schwyz	93787	St. Moritz	95401	Aigle
90768	Spiez	91407	Sarnen	93851	Davos	95414	Villeneuve (VD)
90979	Herzogenbuchsee	91509	Stans	93955	Landquart	95822	Payerne
91031	Hochdorf	92275	Murten	94035	Niederrohrdorf – Oberrohrdorf	96253	Crans-Montana
91103	Sursee	92407	Oensingen	94163	Frick	96300	Zermatt
91301	Einsiedeln	93101	Appenzell	94282	Rothrist	96800	Porrentruy