

Gross domestic product (GDP)

CHF 781 460 m

At current prices, provisional

CHF 88 717 per inhabitant

2.6%

Change over previous year,
at prices of preceding year, provisional

CHF 765 675 m

Gross national income (GNI)

at current prices, provisional

CHF 376 683 m

Consumption expenditure

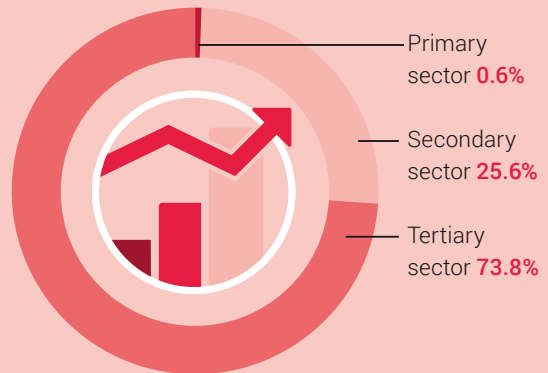
at current prices,

provisional

CHF 42 764 per inhabitant



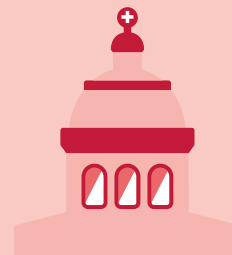
Structure of the Swiss economy
as a % of the GDP, by economic sectors



23.8%

Savings rate of private households

as a % of the gross disposable income incl. the 2nd pillar



+1.2%

Surplus (+)/deficit (-)
of general government
in relation to the GDP