

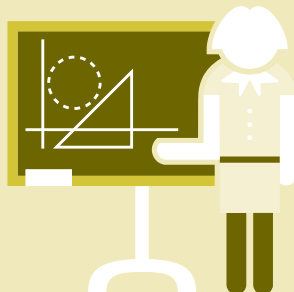
Figures from 2021 unless another year is specified



Pupils and Students 2022/23, in thousands

- ① Compulsory education **1011.4**
- ② Upper secondary level **365.0**
- ③ Professional education **60.9**
- ④ Higher education institutions **274.9**

Teaching staff 2021/22 and higher education staff, in thousands



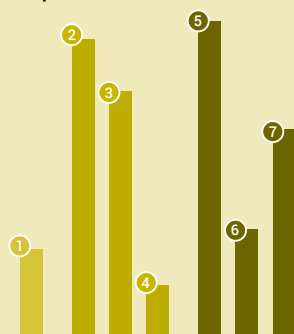
Compulsory education **104.9**

Higher education institutions **102.9**

Upper secondary level **35.7**

Colleges of higher education **8.2**

Educational attainment level of the population (aged 25–64), in percent



- ① **Compulsory education** **12.6**
- ② **Upper secondary level** **42.4**
- ③ **Vocational education and training** **34.9**
- ④ **General education** **7.5**
- ⑤ **Tertiary level** **45.0**
- ⑥ **Professional education** **15.4**
- ⑦ **Higher education institutions** **29.6**



CHF 41.3 bn

Public education expenditure

5.6%

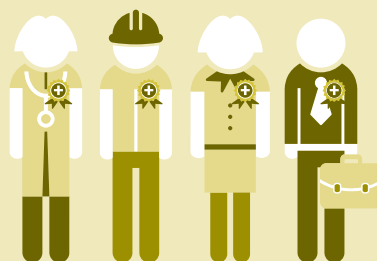
of the gross domestic product



CHF 25 bn

Expenditure on research and development, in Switzerland/Of which business enterprises **68%**

R&D personnel in the business enterprises **54 009** (full-time equivalents)



90.7%

of young adults up to the age of 25 will have obtained an upper secondary qualification