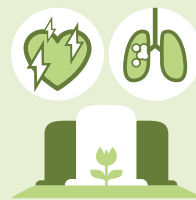


Quota da la populaziun en buna sanadad

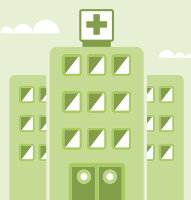
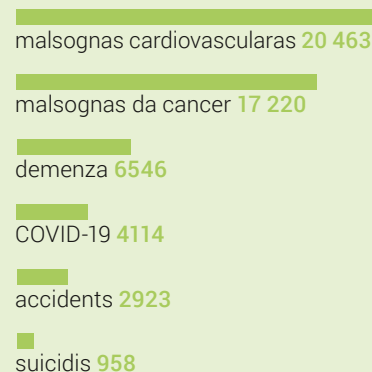


Quota da la populaziun cun surpaisa



74 425

mortoris, da quels:



281 458

plassas da lavur equivalentas a temp cumplain en ospitals ed en chasas da persunas attempadas e da tgira (CAT)



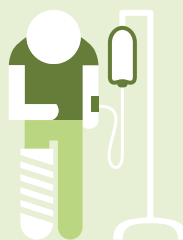
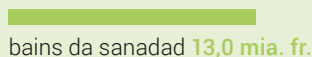
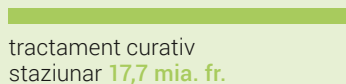
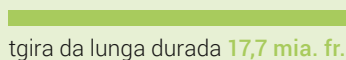
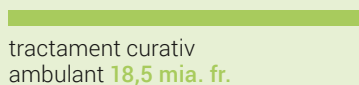
4,6

medias e medis per 1000 abitantas ed abitants

86,3 mia. fr.

(11,8% dal PIB)

expensas per la sanadad 2021, da quellas:



11%

Quota da la populaziun ospitalisada durant l'onn



14%

Quota da la populaziun a partir dad 80 onns en CAT (**70%** da las abitantas e dals abitants en CAT da ≥ 80 onns èn dunnas)