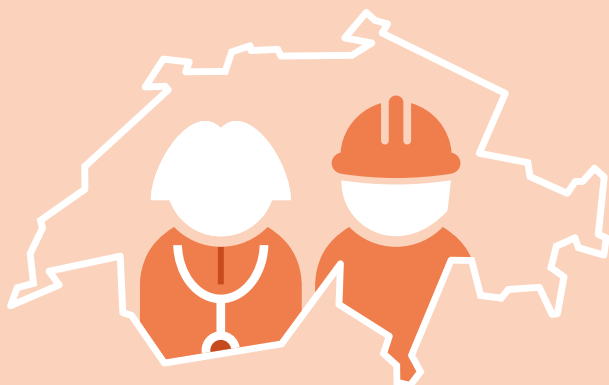


Employed persons



4.848 m



77.7%

work in the service sector

37.6%

work part-time (<90%)

8.2%

have more than one
professional activity

14.0%

are self-employed

10.4%

changed employers
between 2022 and 2023

Unemployed based on ILO definition



204 000

Long-term unemployed (1 year or more) based on ILO definition



73 000



36.9

number of persons aged 65 and over
per 100 economically active persons
aged 20 to 64