



00

Statistical Base and Overviews

1146-1300

Statistical Atlas of Switzerland

Current, interactive maps regarding society, economy, space and the environment

A summary

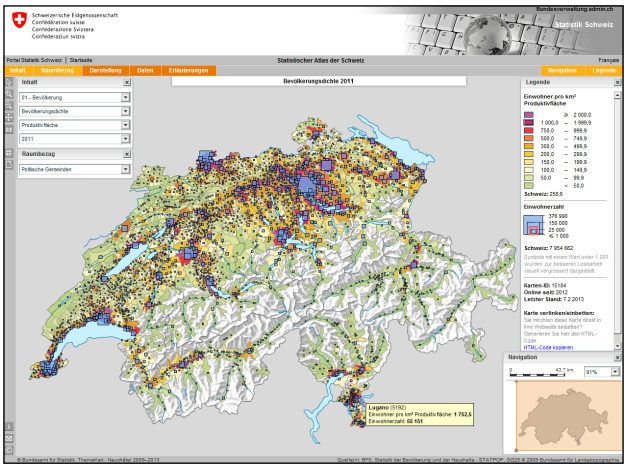


Schweizerische Eidgenossenschaft
Confédération suisse
Confederazione Svizzera
Confederaziun svizra

Swiss Confederation

Federal Department of Home Affairs FDHA
Federal Statistical Office FSO

Neuchâtel, 2013



With over 2000 interactive topical maps in 21 chapters at present, the Atlas offers an up-to-date, modern and captivating overview of interesting issues from the whole range of topics covered by official Swiss and European statistics.

In addition to current data, historical time series also clarify long-term correlations and regional developments. National information is complemented by international comparisons, enabling analyses to be made beyond borders.

Spatial breakdown

Most topics are shown at the administrative levels of commune, district and canton. Analytical and regional-political divisions are also used for various maps. In the International chapter, the topics are shown at country level.

Languages

The Atlas is currently available in French and German.

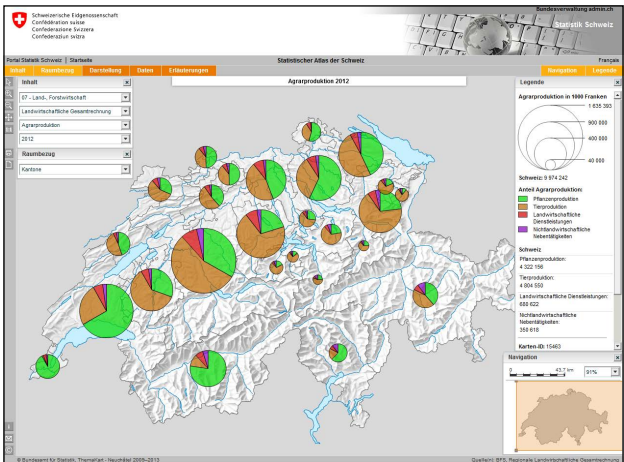
Topical overview of the chapters and examples

Population

How many people live in Switzerland? Where is the largest population density? What is the age structure of the population? What languages are spoken and where? Which area has the greatest number of foreign nationals? At what age do men and women marry for the first time? How does religious denomination differ throughout the cantons?

Territory and the environment

What is the land use like in Switzerland? What is the share of nuclear energy compared to other countries?



Employment and income

How many employed persons work part-time? How many work in the primary, secondary and tertiary economic sectors?

National economy

What are the cantonal differences in terms of GDP per capita and its growth?

Industry and services

How many employed persons work in mechanical engineering? How many companies were newly founded in 2010?

Agriculture and forestry

What subsidies are there for farmholdings and who receives these? How many organic farms are there and where can they be found? Who owns the forest?

Construction and housing

How many new dwellings and buildings have been developed in the last few years? What is the home ownership rate throughout the cantons?

Mobility and transport

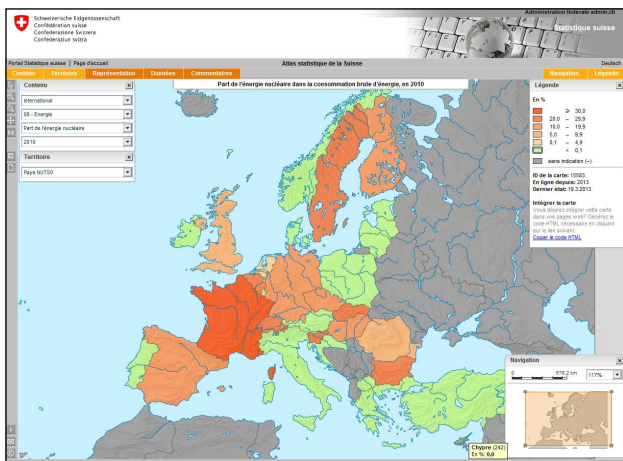
How many road vehicles have been newly registered? Where do the greatest number of serious road accidents take place?

Tourism

What are the bed and room occupancy rates in hotels and health resorts? How many overnight stays (on average) are there by foreign guests in these hotels and health resorts?

Social security

How many people receive social assistance benefits in my canton?



Health

How many hospital beds and nursing home places are available in my canton? What is the abortion rate?

Education and science

Are there differences between cantons with regard to the population's educational level?

Culture and media

How many cinemas are there in Switzerland? What digital technology (2D/3D) is used? How much does a cinema ticket cost in Davos?

Politics

This chapter shows maps depicting the last National Council elections and last year's votes.

Crime and criminal law

Are there urban centres with concentrated crime?

Public finances

What is the tax burden for single persons in the communes?

Economic and social situation of the population

Maps on the topics of gender equality and unpaid work are analysed in further detail in this chapter.

Spatial divisions of Switzerland

What are the official spatial divisions? Which regions are analysed? How has the Swiss commune landscape changed and how is it continuing to do so?

Historical statistics

Various statistics such as the population since 1850 are considered historically in time series.

International

Recently integrated into the *Statistical Atlas of Switzerland*, this chapter puts Swiss figures in an international context and enables the differences between European countries to be analysed.

Access and products

Online version

The online versions of the statistical atlases of the FSO are available free of charge and are always up-to-date. You can access the atlases via: www.statistik.admin.ch → Regional Data → Maps and atlases or using the direct link www.statatlas-schweiz.admin.ch. Updated on an ongoing basis.



DVD (available to buy)

The Atlas is also offered as part of the *Statistical Yearbook of Switzerland* DVD (not available separately): www.statistik.admin.ch → Services → Swiss statistical publications → Statistical yearbooks → *Statistical Yearbook of Switzerland*. Price: CHF 130. Updated every year.



iStatatlas in the AppStore (available to buy)

iPad versions are also available for nearly all of the maps: <http://itunes.apple.com> → iStatatlas Price: CHF 1 in the AppStore. Updated every year.



Political Atlas of Switzerland (available to buy)

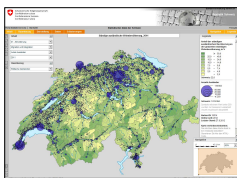
This specialist atlas showing the National Council elections since 1919 and Swiss federal popular votes since 1866 is available as a USB card. Price: CHF 19. Updated every year.



System requirements

The Statistical Atlas can be used with all common internet browsers. Current system requirements can be found at: www.statistik.admin.ch → Regional → Maps and atlases

Functions and interactive options



territories, dynamic searches of all statistical values and an interactive key.

Datenansicht

Bitte klicken Sie auf die Spaltenüberschriften, um die Datenreihe auf- oder absteigend zu sortieren.

Statistische Daten herunterladen:
Sie möchten diese statistischen Daten weiterverwenden? Generieren Sie hier Datenreihe zum Export
[Statistische Daten herunterladen](#)

ID	Name	Anteil der ständi	Anzahl Ausländer
1	Aargau am Albis	13,6	259
2	Aargau am Albis	26,0	2 990
3	Basel-Stadt	12,7	659
4	Hausen am Albis	12,4	416
5	Hedingen	14,0	454

Data from the map selected is shown directly in **interactive tables**. This means that the exact figures and facts can be examined, sorted and downloaded.

Erhebungen

[Über diese Karte](#)

Definitionen

[Beschreibungen](#)

[Quellen, statistische Erhebungen](#)

[Erhebungsjahre/Zeiträume](#)

[Räumliche Bereiche](#)

[Auswertung der Daten](#)

[Weiterführende Informationen, Links](#)

Definitionen

Sie finden die in der Karte verwendeten Definitionen im Portal Statistik Schweiz.

- [Standard Wohnbevölkerung \(Demographisch\)](#)
- [Wohnbevölkerung, Ausländeranteil](#)

Extensive **information texts** explain the maps, providing definitions and meta information on the selected thematic maps, data sources and spatial divisions. Further information

on the individual topics from the *Swiss Statistics Portal* is available via web links.

Editor and information:

Sabine Kuster, Thomas Schulz
Tel. 032 713 67 31
Email: statatlas@bfs.admin.ch
Dissemination and Publications Section
(DIAM), Centre of excellence ThemaKart

Distribution:

Federal Statistical Office, CH-2010 Neuchâtel
Tel. 032 713 60 60 / Fax 032 713 60 61
Email: order@bfs.admin.ch

Languages:

Original version in German, also available in French and Italian

Translation:

FSO Language Services

Cover graphics:

FSO Concept: Netthoevel & Gaberthüel, Biel;
Photograph: © Bernd Kröger – Fotolia.com

Graphics/Layout:

DIAM Section, ThemaKart, Prepress/Print

Order number:

1146-1300, free of charge

© FSO, Neuchâtel 2013