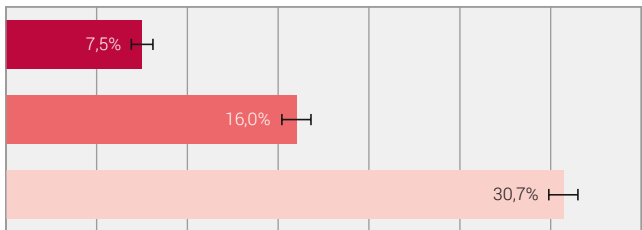


# Poverty rates before and after social transfers, 2016

Total population



poverty rate (after social transfers)

Confidence interval (95%)

1) poverty rate before social transfers in the narrow sense

2) poverty rate before all social transfers

Social transfers in the narrow sense cover all social transfers excluding old-age or survivors' benefits. Accordingly, in variant 1) old-age or survivors' benefits (incl. SB) are included in the household income and are not considered as social transfers. In variant 2) by contrast, all social transfers are deducted from the disposable household income.