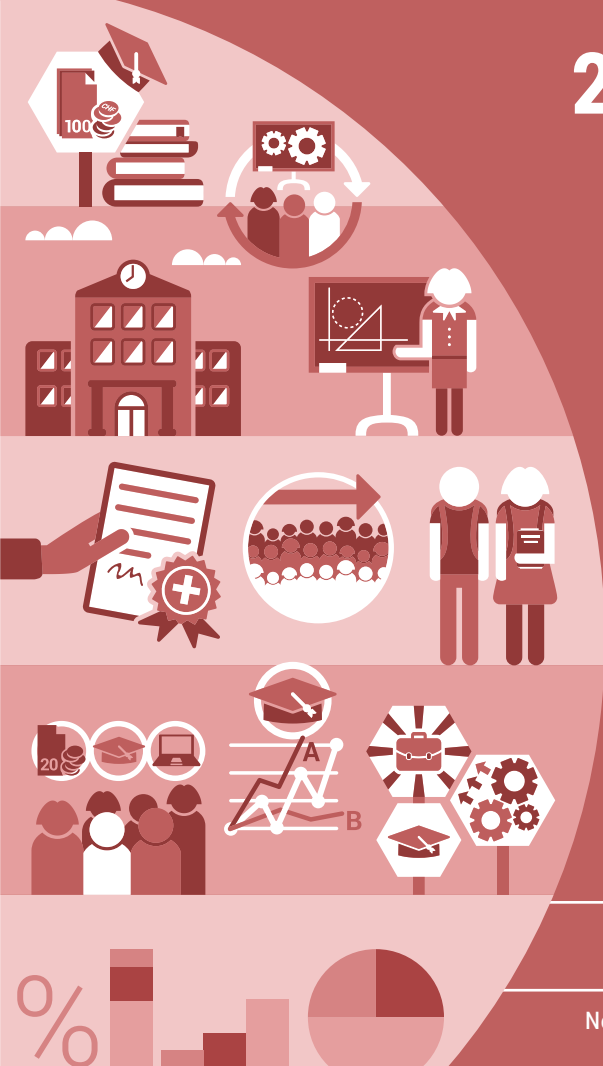


2017



15

Education
and science

Neuchâtel 2018

Education Statistics 2017



Schweizerische Eidgenossenschaft
Confédération suisse
Confederazione Svizzera
Confederaziun svizra

Swiss Confederation

Federal Department of Home Affairs FDHA
Federal Statistical Office FSO

Pupils and students, 2016/17

Primary level, lower and upper secondary levels

T1

Education level	Total	Male	Female	National origin		
				Swiss	Foreign	Un-specified
Compulsory education	936 550	482 013	454 537	682 451	252 702	1 397
Primary level 1–2 ¹	170 758	87 680	83 078	123 453	46 985	320
Primary level 3–8	486 813	247 945	238 868	356 193	129 905	715
Lower secondary level	247 539	125 878	121 661	186 315	60 893	331
Basic requirements	71 332	40 435	30 897	45 258	25 985	89
Extended requirements	155 917	74 798	81 119	129 238	26 512	167
Regardless of level	20 290	10 645	9 645	11 819	8 396	75
Special education programme	31 440	20 510	10 930	16 490	14 919	31
Upper secondary level	365 559	191 844	173 715	287 114	77 916	529
Transitional education lower – upper sec.	18 692	10 173	8 519	8 956	9 714	22
Vocational education and training (VET) ²	226 351	131 922	94 429	180 865	45 316	170
Vocational baccalaureate ³	9 307	4 710	4 597	8 431	875	1
General education	98 328	39 984	58 344	78 427	19 761	140
Complement. education in upper secondary	12 881	5 055	7 826	10 435	2 250	196

¹ Pre-school, first learning cycle

² Including preparation for federal vocational baccalaureate integrated in vocational education and training (FVB1)

³ Federal vocational baccalaureate after vocational education and training (FVB2)

Students, 2016/17

Tertiary level

T2

Education level	Total	Male	Female	National origin		
				Swiss	Foreign	Un-specified
Advanced professional education and training (PET)	56 658	31 699	24 959	49 082	6 409	1 167
Professional education and training colleges	31 242	16 643	14 599	26 964	3 716	562
Preparation for the federal PET diploma examination ¹	17 795	11 170	6 625	15 522	1 791	482
Preparation for the advanced federal PET diploma examination ¹	3 384	2 431	953	3 011	319	54
Unregulated advanced professional education and training	4 237	1 455	2 782	3 585	583	69
Higher education institutions	244 104	119 462	124 642	182 924	61 180	
Universities of applied sciences	95 570	45 746	49 824	79 412	16 158	
including Universities of Teacher Education	20 472	5 511	14 961	18 461	2 011	
Universities	148 534	73 716	74 818	103 512	45 022	
Humanities and social sciences	44 587	14 561	30 026	33 458	11 129	
Economics	22 143	14 439	7 704	14 190	7 953	
Law	16 299	6 908	9 391	13 242	3 057	
Exact and natural sciences	26 796	16 440	10 356	15 972	10 824	
Medicine and pharmacy	16 319	6 319	10 000	13 082	3 237	
Engineering, architecture	18 141	12 748	5 393	10 278	7 863	
Interdisciplinary and others	4 249	2 301	1 948	3 290	959	
Tertiary level	300 762	151 161	149 601	232 006	67 589	1 167

¹ Students are not completely surveyed because the preparation courses for federal exams are not formally regulated. They often take place in modular trainings, which are only surveyed if the single module corresponds to at least half a school-year (full time equivalent).

Pupils, 2016/17

Compulsory education, cantons

T3

Canton	Compulsory education ¹			
	Total	Primary level 1–2 ²	Primary level 3–8	Lower secondary
Switzerland	905 110	170 758	486 813	247 539
ZH	157 320	31 727	85 344	40 249
BE	104 908	19 919	57 279	27 710
LU	42 366	6 857	23 707	11 802
UR	3 898	694	2 120	1 084
SZ	16 122	2 831	8 673	4 618
OW	4 004	603	2 253	1 148
NW	4 119	721	2 261	1 137
GL	4 099	735	2 197	1 167
ZG	13 551	2 500	7 334	3 717
FR	38 886	7 008	21 095	10 783
SO	27 021	5 056	14 733	7 232
BS	17 707	3 690	9 538	4 479
BL	29 928	5 453	16 141	8 334
SH	7 937	1 545	4 278	2 114
AR	5 685	1 108	3 084	1 493
AI	1 791	345	892	554
SG	54 143	10 288	28 915	14 940
GR	18 871	3 443	9 976	5 452
AG	72 930	14 069	39 306	19 555
TG	28 991	5 509	15 590	7 892
TI	37 443	8 551	15 864	13 028
VD	92 580	16 483	50 548	25 549
VS	36 670	6 418	20 235	10 017
NE	19 980	3 660	10 950	5 370
GE	55 624	10 118	29 814	15 692
JU	8 536	1 427	4 686	2 423

¹ The 31 440 pupils in special education programmes are excluded.

² Pre-school, first learning cycle

Teachers in 2016/17 and staff employed in higher education institutions in 2016

(public education)

T4

Education level <i>Type of staff</i>	Persons ¹			Full-time equiva- lents ²
	Total	of whom		
		Female %	Foreign %	Total
Compulsory education	92 638	75.3	5.7	59 172
Primary level 1–2 ³	18 174	94.6	3.3	9 139
Primary level 3–8	50 672	82.5	4.7	30 449
Lower secondary level	34 076	54.6	8.6	19 583
Special education programme
Upper secondary level	29 095	43.6	8.0	17 412
General education	12 076	47.0	8.8	7 281
Vocational education and training (VET) ⁴	17 019	41.3	7.4	10 131
Tertiary level:				
Professional colleges	2 118	41.5	13.4	662
Tertiary level: higher education institutions⁵	89 387	44.9	37.3	59 278
Universities of applied sciences/Universities of teacher education	26 875	46.2	21.6	16 846
Teaching staff with manage- ment responsibility	2 067	29.9	27.0	1 804
Other teaching staff	11 910	41.4	21.6	5 860
Assistants and scientific staff	6 080	43.3	27.5	3 997
Managerial, clerical and technical staff	6 818	62.1	14.6	5 184
Universities and institutes of technology	62 512	44.4	44.2	42 432
Professors	4 363	22.2	50.2	3 969
Other teaching staff	9 204	28.3	35.4	2 779
Assistants and scientific staff	30 563	43.9	58.4	21 648
Managerial, clerical and technical staff	18 382	58.4	23.6	14 036

¹ The figures include all teachers working at the level of education considered (double-counting possible).

² Full-time equivalents are expressed as the ratio of actual hours employed and the normal hours of a person employed full-time (e.g. a person employed for 50% of a full-time job counts as 0.5 full-time equivalents).

³ Pre-school, first learning cycle

⁴ Including transitional education from lower to upper secondary level, vocational matura and complementary education in upper secondary

⁵ The number of persons employed in higher education institutions is based on the reference day 31 December. The full-time equivalents relate to the entire calendar year.

Selected degrees and certificates, 2016

T5

Education level	Total	Male		Female	
		absolute	%	absolute	%
Upper secondary level					
Certificate of basic vocational education	134	122	91.0	12	9.0
Federal certificate	6 280	3 328	53.0	2 952	47.0
Federal proficiency certificate	63 597	34 734	54.6	28 863	45.4
Proficiency certificate (other professions)	69	12	17.4	57	82.6
Trade certificate	0	0	0.0	0	0.0
Vocational Matura	14 396	7 650	53.1	6 746	46.9
Academic Matura	18 626	7 887	42.3	10 739	57.7
Specialised Matura	2 716	524	19.3	2 192	80.7
Intermediate school certificate	3 985	932	23.4	3 053	76.6
Tertiary level					
Professional education and training (PET)					
Diploma from unregulated professional education and training	396	116	29.3	280	70.7
Diploma of professional education and training	14 402	8 945	62.1	5 457	37.9
Advanced federal diploma of professional education and training	3 473	2 186	62.9	1 287	37.1
College of professional education and training degree	8 470	4 392	51.9	4 078	48.1
Higher education institutions					
Degree from a university of teacher education	1 024	558	54.5	466	45.5
Bachelor's degree from a university of applied sciences and teacher education	16 240	7 186	44.2	9 054	55.8
Master's degree from a university of applied sciences and teacher education	3 972	1 648	41.5	2 324	58.5
First university degree or diploma	100	14	14.0	86	86.0
Bachelor's degree from a university	14 319	6 771	47.3	7 548	52.7
Master's degree from a university	13 852	6 682	48.2	7 170	51.8
Doctorate	3 936	2 192	55.7	1 744	44.3

Sources: FSO – Statistics on certificates (SBA),
Vocational education and training statistics (SBG-SFPI),
Students and degrees of higher education institutions (SHIS-studex)

© FSO 2018

Educational institutions, 2016/17

T6

Education level	Total	Private sector ³ %
Primary level 1–2 ¹	5 414	6.3
Primary level 3–8 and lower secondary level	6 120	12.2
Upper secondary level: Vocational education and training (VET) ² and general education	842	42.9
Tertiary level: Professional education and training (PET) and higher education institutions	402	60.2

¹ Pre-school, first learning cycle years 1–2

² Including transitional education from lower to upper secondary level, vocational matura and complementary education in upper secondary

³ Government dependent private and independent private educational institutions

Source: FSO – Educational institutions statistics (SBI)

© FSO 2018

Financial flows for education¹, 2015

T7

	In CHF millions							
	Total		Confederation		Cantons		Communes	
	absolute	%	absolute	%	absolute	%	absolute	%
Funding	36 728	100.0	6 358	17.3	18 793	51.2	11 577	31.5
Transfers								
Confederation to cantons			– 2 727		2 727		–	
Cantons to Confederation			12		– 12		–	
Cantons to communes			–		– 977		977	
Communes to cantons			–		2 692		– 2 692	
Total after transfers	36 728	100.0	3 643	9.9	23 223	63.2	9 862	26.9

¹ The public expenditure for research is included in the public expenditure for education.

Sources: FSO – Public education expenditure (ÖBA); FFA – Financial Statistics

© FSO 2018

Public education expenditure by administrative and educational level, 2015

T8

Education level	In CHF millions				
	Total		Administrative level making expenditure		
	absolute	%	Confederation	Cantons	Communes
Total	36 727.6	100.0	3 643.1	23 222.6	9 861.9
of which salaries	24 379.4	66.4			
teacher's salaries only	17 698.9	48.2			
Compulsory education	16 258.0	44.3	21.2	7 069.5	9 167.3
Special schools	1 918.0	5.2	–	1 454.0	464.0
Upper secondary: Vocational education and training (VET)	3 514.7	9.6	89.9	3 245.5	179.4
Upper secondary: General education	2 340.7	6.4	1.6	2 337.3	1.9
Tertiary: Professional education and training (PET)	415.5	1.1	51.8	363.6	0.1
Tertiary: Higher education institutions	8 030.6	21.9	1 109.1	6 914.3	7.2
Research	3 674.7	10.0	2 361.9	1 310.8	2.0
Non-attributable expenditure	575.4	1.6	7.7	527.6	40.1

Sources: FSO – Public education expenditure (ÖBA); FFA – Financial Statistics © FSO 2018

Published by:	Federal Statistical Office (FSO)
Information:	www.education-stat.admin.ch , university: sius@bfs.admin.ch , other parts of the educational system: lernstat@bfs.admin.ch
Editor:	Nathalie Quartier, FSO
Contents:	BILD-P Section
Series:	Swiss Statistics
Topic:	15 Education and science
Original text:	German/French
Translation:	FSO language services
Layout:	DIAM Section, Prepress/Print
Front page:	DIAM Section, Prepress/Print
Printed:	in Switzerland
Copyright:	FSO, Neuchâtel 2018 Reproduction with mention of source authorised (except for commercial purposes).
Print format orders:	Federal Statistical Office, CH-2010 Neuchâtel, tel. +41 58 463 60 60, fax +41 58 463 60 61, order@bfs.admin.ch
Downloads:	www.statistics.admin.ch (free of charge)
FSO number:	420-1700