

## Racism and integration



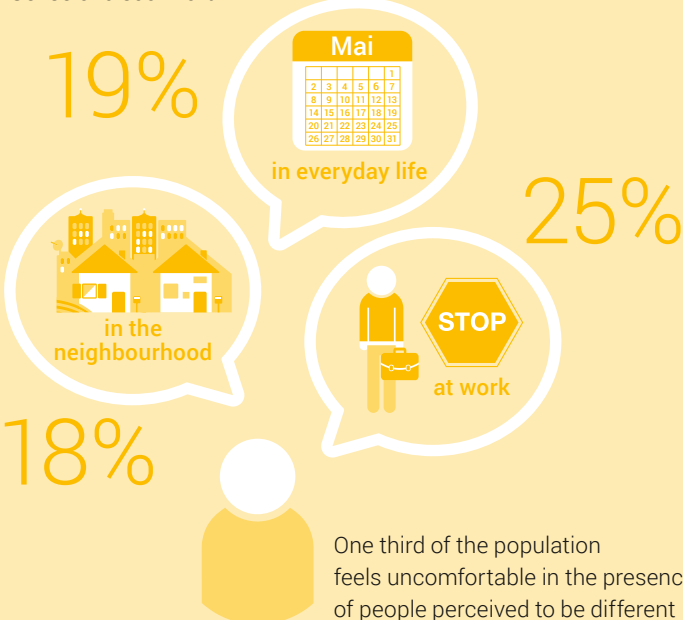
59%

of the population consider racism as an important social problem

55%

of the population rate the integration of migrants as good to very good

## Sense of discomfort

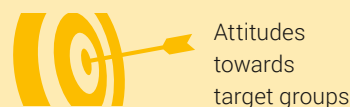
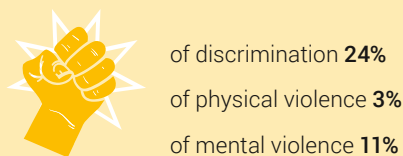


## Proportion of the population that feels threatened:



28% of the population who consider themselves victims

Personal experience of discrimination or violence



## Negative opinions towards

Muslims 11%

Black people 11%

Jewish people 9%

## Rejection of stereotypes about

4%

9%

9% of the population