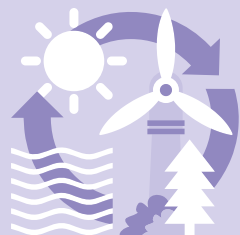




Energy dependency

25% Domestic production

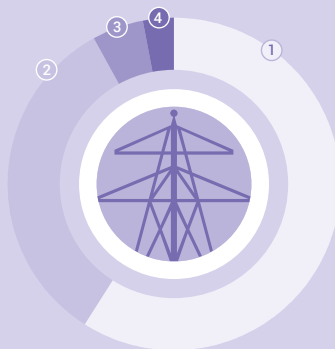
75% Imports



22.3%
Share of renewable energies



64%
Share of fossil fuels



Domestic electricity production

- ① Hydropower plants 60%
- ② Nuclear power plants 32%
- ③ Thermal power plants 5%
- ④ Various renewable sources 4%



CHF 262

Monthly household expenditure on energy, 2016

CHF 410 m

Public expenditure on energy research



78%
Energy-related greenhouse gas emissions, 2016

Final energy consumption 1990–2017

