

Figures from 2017 unless another year is specified



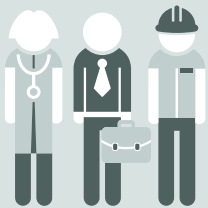
45%

of jobs in the 5 largest agglomerations (Basel, Bern, Geneva, Lausanne, Zurich), 2016



4.2%

Social assistance rate in the urban area twice as high as in rural area



48%

of active population with a tertiary-level degree in an urban, 37% in a rural area

Unemployment rate in the agglomerations



Geneva 5.0%

Lausanne 4.7%

Zurich 3.6%

Basel 3.2%

Switzerland 3.2%

Other agglomerations or cores 3.1%

Bern 2.7%

No agglomerations or cores 2.3%

Average distance to nearest service, 2015

Transport stops (2017)

Compulsory schools

Grocery shops

Doctors' practices



Urban Intermediate Rural